

Daily Summary for Amman Stock Exchange

VALUE TRADED (JD)

	2025	2026	NET CHANGE	CHANGE (%)
Daily	7,644,410	18,216,873	10,572,463	138.30%
Cumulative (1/6-7/6)	45,259,343	94,778,578	49,519,235	109.41%
Cumulative (4/1-7/6)	732,775,259	1,373,437,639	640,662,380	87.43%

NO. OF SHARES TRADED

	2025	2026	NET CHANGE	CHANGE (%)
Daily	2,989,863	5,843,146	2,853,283	95.43%
Cumulative (1/6-7/6)	17,697,729	29,547,590	11,849,861	66.96%
Cumulative (4/1-7/6)	377,231,064	475,165,670	97,934,606	25.96%

NO. OF TRANSACTIONS

	2025	2026	NET CHANGE	CHANGE (%)
Daily	2,865	5,970	3,105	108.38%
Cumulative (1/6-7/6)	14,736	25,817	11,081	75.20%
Cumulative (4/1-7/6)	243,335	384,800	141,465	58.14%

SOME FINANCIAL RATIOS FOR THE ASE (7/6/2026)

SECTOR	P/E	P/BV	DIVIDEND YIELD (%)	TURNOVER (%)
FINANCIAL	9.921	1.016	4.807	0.066
SERVICES	13.321	1.515	4.709	0.073
INDUSTRY	16.278	2.900	4.787	0.198
OVERALL	12.177	1.542	4.911	0.089

ASE GENERAL FREE FLOAT WEIGHTED INDEX ASEGI (1999=1000)

	THURSDAY 04/06/2026	SUNDAY 07/06/2026	% CHANGE	
			DAY BEFORE	YTD
GENERAL INDEX ASEGI	4030.2	4007.1	-0.57%	10.95%
FINANCIAL	3886.2	3881.4	-0.12%	2.80%
SERVICES	2698.6	2697.5	-0.04%	24.18%
INDUSTRY	10717.0	10441.3	-2.57%	17.68%

ASE FREE FLOAT WEIGHTED INDEX ASE20 (2014=1000)

	2201.6	2190.6	-0.50%	10.71%
--	--------	--------	--------	--------

TOTAL RETURN INDEX ASETR (2021=1074)

	3046.1	3030.9	-0.50%	16.48%
--	--------	--------	--------	--------

ASE WEIGHTED INDEX (1991=1000)

	THURSDAY 04/06/2026	SUNDAY 07/06/2026	% CHANGE	
			DAY BEFORE	YTD
GENERAL	8125.5	7998.2	-1.57%	13.35%
BANKS	10113.9	10085.7	-0.28%	6.80%
INSURANCE	1947.9	1944.7	-0.16%	9.06%
SERVICES	1158.6	1155.0	-0.31%	6.18%
INDUSTRY	14242.4	13830.4	-2.89%	21.29%

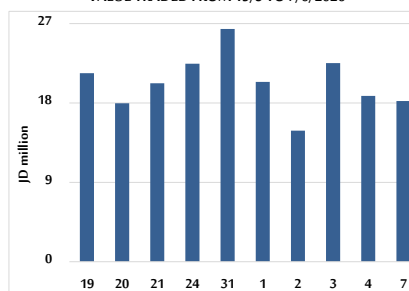
MARKET INDICES WEIGHTED BY FREE FLOAT MARKET CAP. (2012=1000)

	THURSDAY 04/06/2026	SUNDAY 07/06/2026	% CHANGE	
			DAY BEFORE	YTD
FIRST MARKET	2278.1	2265.4	-0.56%	11.06%
SECOND MARKET	1036.9	1036.0	-0.08%	1.34%

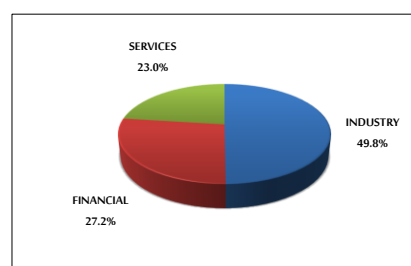
MARKET CAPITALIZATION (JD)

	30,140,388,151	29,691,036,272	-1.49%	12.07%
--	----------------	----------------	--------	--------

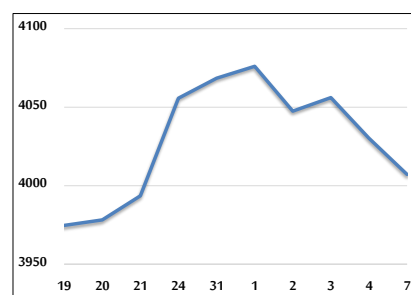
VALUE TRADED FROM 19/5 TO 7/6/2026



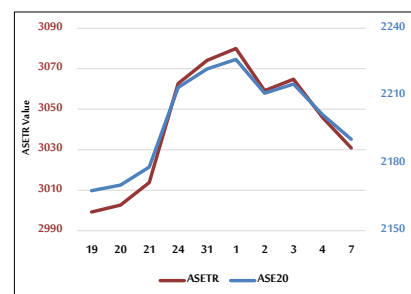
VALUE TRADED BY SECTOR SUNDAY 7/6/2026



ASE GENERAL FREE FLOAT WEIGHTED INDEX 19/5 TO 7/6/2026



ASE20 INDEX & ASETR INDEX FROM 19/5 TO 7/6/2026



ASE WEIGHTED INDEX FROM 19/5 TO 7/6/2026

