

Daily Summary for Amman Stock Exchange

VALUE TRADED (JD)

	2025	2026	NET CHANGE	CHANGE (%)
Daily	8,266,925	18,794,697	10,527,772	127.35%
Cumulative (1/6-4/6)	37,614,933	76,561,705	38,946,772	103.54%
Cumulative (4/1-4/6)	725,130,849	1,355,220,766	630,089,917	86.89%

NO. OF SHARES TRADED

	2025	2026	NET CHANGE	CHANGE (%)
Daily	2,883,557	5,681,396	2,797,839	97.03%
Cumulative (1/6-4/6)	14,707,866	23,704,444	8,996,578	61.17%
Cumulative (4/1-4/6)	374,241,201	469,322,524	95,081,323	25.41%

NO. OF TRANSACTIONS

	2025	2026	NET CHANGE	CHANGE (%)
Daily	2,844	5,423	2,579	90.68%
Cumulative (1/6-4/6)	11,871	19,847	7,976	67.19%
Cumulative (4/1-4/6)	240,470	378,830	138,360	57.54%

SOME FINANCIAL RATIOS FOR THE ASE (4/6/2026)

SECTOR	P/E	P/BV	DIVIDEND YIELD (%)	TURNOVER (%)
FINANCIAL	9.948	1.019	4.794	0.072
SERVICES	13.333	1.516	4.704	0.054
INDUSTRY	16.786	2.990	4.642	0.182
OVERALL	12.370	1.567	4.834	0.087

ASE GENERAL FREE FLOAT WEIGHTED INDEX ASEGI (1999=1000)

	WEDNESDAY 03/06/2026	THURSDAY 04/06/2026	% CHANGE	
			DAY BEFORE	YTD
GENERAL INDEX ASEGI	4056.1	4030.2	-0.64%	11.59%
FINANCIAL	3902.6	3886.2	-0.42%	2.93%
SERVICES	2719.8	2698.6	-0.78%	24.23%
INDUSTRY	10817.8	10717.0	-0.93%	20.78%

ASE FREE FLOAT WEIGHTED INDEX ASE20 (2014=1000)

	2215.2	2201.6	-0.61%	11.27%
--	--------	--------	--------	--------

TOTAL RETURN INDEX ASETR (2021=1074)

	3064.8	3046.1	-0.61%	17.06%
--	--------	--------	--------	--------

ASE WEIGHTED INDEX (1991=1000)

	WEDNESDAY 03/06/2026	THURSDAY 04/06/2026	% CHANGE	
			DAY BEFORE	YTD
GENERAL	8184.3	8125.5	-0.72%	15.16%
BANKS	10173.7	10113.9	-0.59%	7.10%
INSURANCE	1943.4	1947.9	0.23%	9.23%
SERVICES	1160.3	1158.6	-0.15%	6.51%
INDUSTRY	14378.6	14242.4	-0.95%	24.90%

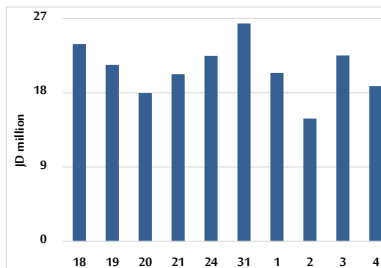
MARKET INDICES WEIGHTED BY FREE FLOAT MARKET CAP. (2012=1000)

	WEDNESDAY 03/06/2026	THURSDAY 04/06/2026	% CHANGE	
			DAY BEFORE	YTD
FIRST MARKET	2292.4	2278.1	-0.63%	11.68%
SECOND MARKET	1044.5	1036.9	-0.73%	1.42%

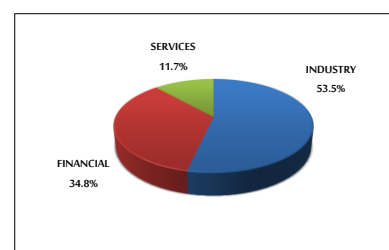
MARKET CAPITALIZATION (JD)

	30,349,484,246	30,140,388,151	-0.69%	13.77%
--	----------------	----------------	--------	--------

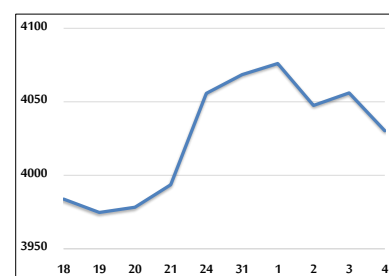
VALUE TRADED FROM 18/5 TO 4/6/2026



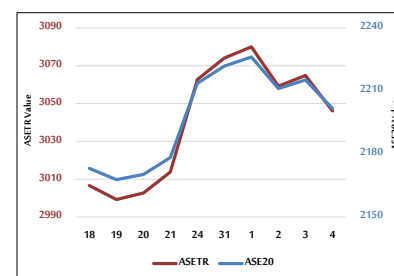
VALUE TRADED BY SECTOR THURSDAY 4/6/2026



ASE GENERAL FREE FLOAT WEIGHTED INDEX 18/5 TO 4/6/2026



ASE20 INDEX & ASETR INDEX FROM 18/5 TO 4/6/2026



ASE WEIGHTED INDEX FROM 18/5 TO 4/6/2026

