

### Daily Summary for Amman Stock Exchange

VALUE TRADED (JD)

	2024	2025	NET CHANGE	CHANGE (%)
Daily	3,835,865	5,626,763	1,790,898	46.69%
Cumulative (2/2-10/2)	28,717,494	39,399,234	10,681,740	37.20%
Cumulative (2/1-10/2)	134,959,667	181,112,881	46,153,214	34.20%

NO. OF SHARES TRADED

	2024	2025	NET CHANGE	CHANGE (%)
Daily	2,116,273	4,352,893	2,236,620	105.69%
Cumulative (2/2-10/2)	20,211,917	20,130,163	-81,754	-0.40%
Cumulative (2/1-10/2)	113,344,908	94,542,689	-18,802,219	-16.59%

NO. OF TRANSACTIONS

	2024	2025	NET CHANGE	CHANGE (%)
Daily	1,635	2,035	400	24.46%
Cumulative (2/2-10/2)	14,368	15,435	1,067	7.43%
Cumulative (2/1-10/2)	73,840	62,975	-10,865	-14.71%

SOME FINANCIAL RATIOS FOR THE ASE (10/2/2025)

SECTOR	P/E	P/BV	DIVIDEND YIELD (%)	TURNOVER (%)
FINANCIAL	7.527	0.772	6.083	0.079
SERVICES	12.987	1.318	5.858	0.064
INDUSTRY	10.877	1.805	6.241	0.032
OVERALL	8.592	1.074	6.395	0.070

STOCK PRICE INDEX WEIGHTED BY FREE FLOAT MARKET CAPITALIZATION (1999=1000)

	SUNDAY 09/02/2025	MONDAY 10/02/2025	% CHANGE	
			DAY BEFORE	YTD
GENERAL	2605.4	2603.0	-0.09%	4.59%
FINANCIAL	2746.6	2740.2	-0.23%	3.37%
SERVICES	1755.7	1757.7	0.11%	3.80%
INDUSTRY	5963.2	5966.6	0.06%	7.87%

STOCK PRICE INDEX WEIGHTED BY FREE FLOAT MARKET CAPITALIZATION ASE20 (2014=1000)

	1413.9	1412.1	-0.13%	5.06%
--	--------	--------	--------	-------

Total Return Index ASETR (2021=1074)

	1726.8	1724.7	-0.13%	5.06%
--	--------	--------	--------	-------

STOCK PRICE INDEX WEIGHTED BY MARKET CAPITALIZATION (1991=1000)

	SUNDAY 09/02/2025	MONDAY 10/02/2025	% CHANGE	
			DAY BEFORE	YTD
GENERAL	4993.0	4992.6	-0.01%	7.75%
BANKS	6948.9	6939.2	-0.14%	5.89%
INSURANCE	1374.6	1374.9	0.02%	-0.08%
SERVICES	886.8	886.6	-0.02%	2.66%
INDUSTRY	7497.8	7508.6	0.14%	11.42%

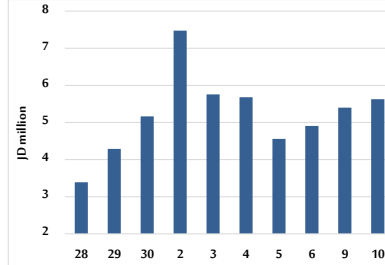
STOCK PRICE MARKET INDEX WEIGHTED BY FREE FLOAT MARKET CAP. (2012=1000)

	SUNDAY 09/02/2025	MONDAY 10/02/2025	% CHANGE	
			DAY BEFORE	YTD
FIRST MARKET	1467.1	1465.4	-0.11%	5.00%
SECOND MARKET	816.3	816.6	0.04%	-1.92%

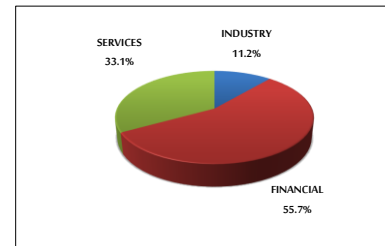
MARKET CAPITALIZATION (JD)

	18,912,702,340	18,910,499,053	-0.01%	7.11%
--	----------------	----------------	--------	-------

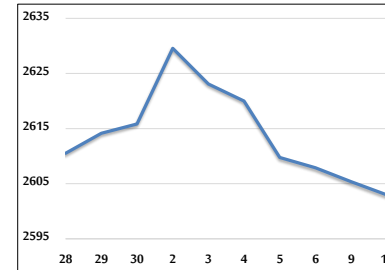
VALUE TRADED FROM 28/1 TO 10/2/2025



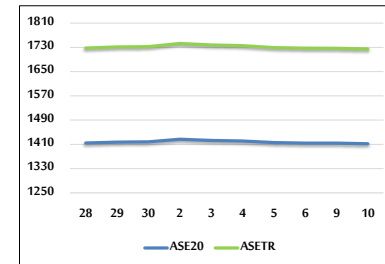
VALUE TRADED BY SECTOR MONDAY 10/2/2025



GENERAL FREE FLOAT PRICE INDEX FROM 28/1 TO 10/2/2025



ASE20 and ASETR FREE FLOAT PRICE INDEX FROM 28/1 TO 10/2/2025



STOCK PRICE INDEX FROM 28/1 TO 10/2/2025

