

## Daily Summary for Amman Stock Exchange

### VALUE TRADED (JD)

	2024	2025	NET CHANGE	CHANGE (%)
Daily	3,168,806	4,906,543	1,737,737	54.84%
Cumulative (2/2-6/2)	21,278,331	28,372,087	7,093,756	33.34%
Cumulative (2/1-6/2)	127,520,504	170,085,734	42,565,230	33.38%

### NO. OF SHARES TRADED

	2024	2025	NET CHANGE	CHANGE (%)
Daily	2,676,892	1,906,594	-770,298	-28.78%
Cumulative (2/2-6/2)	15,210,747	13,591,122	-1,619,625	-10.65%
Cumulative (2/1-6/2)	108,343,738	88,003,648	-20,340,090	-18.77%

### NO. OF TRANSACTIONS

	2024	2025	NET CHANGE	CHANGE (%)
Daily	1,792	1,872	80	4.46%
Cumulative (2/2-6/2)	10,674	11,383	709	6.64%
Cumulative (2/1-6/2)	70,146	58,923	-11,223	-16.00%

### SOME FINANCIAL RATIOS FOR THE ASE (6/2/2025)

SECTOR	P/E	P/BV	DIVIDEND YIELD (%)	TURNOVER (%)
FINANCIAL	8.706	0.797	5.751	0.020
SERVICES	13.078	1.324	5.830	0.058
INDUSTRY	10.744	1.783	6.318	0.041
OVERALL	9.286	1.093	6.252	0.031

### STOCK PRICE INDEX WEIGHTED BY FREE FLOAT MARKET CAPITALIZATION (1999=1000)

	WEDNESDAY 05/02/2025	THURSDAY 06/02/2025	% CHANGE	
			DAY BEFORE	YTD
GENERAL	2609.8	2607.9	-0.07%	4.79%
FINANCIAL	2751.0	2749.4	-0.06%	3.71%
SERVICES	1765.5	1769.0	0.19%	4.47%
INDUSTRY	5937.8	5916.3	-0.36%	6.96%

### STOCK PRICE INDEX WEIGHTED BY FREE FLOAT MARKET CAPITALIZATION ASE20 (2014=1000)

	1415.7	1414.0	-0.12%	5.21%
--	--------	--------	--------	-------

### Total Return Index ASETR (2021=1074)

	1729.1	1727.0	-0.12%	5.21%
--	--------	--------	--------	-------

### STOCK PRICE INDEX WEIGHTED BY MARKET CAPITALIZATION (1991=1000)

	WEDNESDAY 05/02/2025	THURSDAY 06/02/2025	% CHANGE	
			DAY BEFORE	YTD
GENERAL	4998.9	4981.0	-0.36%	7.50%
BANKS	6971.5	6967.5	-0.06%	6.32%
INSURANCE	1372.4	1378.2	0.42%	0.16%
SERVICES	889.1	889.6	0.05%	3.00%
INDUSTRY	7486.3	7426.4	-0.80%	10.20%

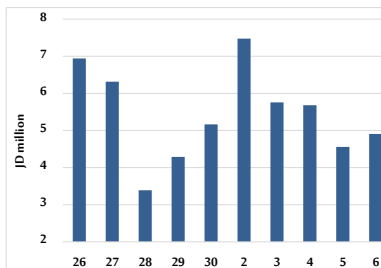
### STOCK PRICE MARKET INDEX WEIGHTED BY FREE FLOAT MARKET CAP. (2012=1000)

	WEDNESDAY 05/02/2025	THURSDAY 06/02/2025	% CHANGE	
			DAY BEFORE	YTD
FIRST MARKET	1469.3	1467.9	-0.10%	5.18%
SECOND MARKET	817.2	820.2	0.36%	-1.49%

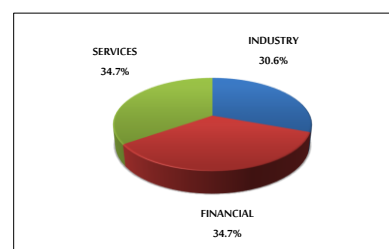
### MARKET CAPITALIZATION (JD)

	18,934,104,156	18,871,639,682	-0.33%	6.89%
--	----------------	----------------	--------	-------

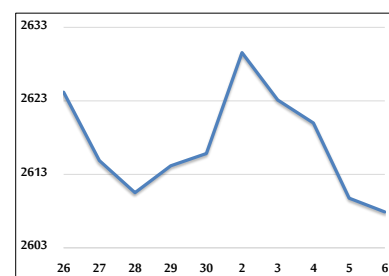
### VALUE TRADED FROM 26/1 TO 6/2/2025



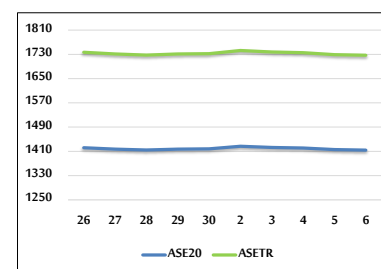
### VALUE TRADED BY SECTOR THURSDAY 6/2/2025



### GENERAL FREE FLOAT PRICE INDEX FROM 26/1 TO 6/2/2025



### ASE20 and ASETR FREE FLOAT PRICE INDEX FROM 26/1 TO 6/2/2025



### STOCK PRICE INDEX FROM 26/1 TO 6/2/2025

