

Daily Summary for Amman Stock Exchange

VALUE TRADED (JD)

	2024	2025	NET CHANGE	CHANGE (%)
Daily	18,215,739	4,287,401	-13,928,338	-76.46%
Cumulative (2/1-29/1)	96,187,014	136,550,421	40,363,407	41.96%
Cumulative (2/1-29/1)	96,187,014	136,550,421	40,363,407	41.96%

NO. OF SHARES TRADED

	2024	2025	NET CHANGE	CHANGE (%)
Daily	12,844,237	2,425,906	-10,418,331	-81.11%
Cumulative (2/1-29/1)	86,448,907	71,350,738	-15,098,169	-17.46%
Cumulative (2/1-29/1)	86,448,907	71,350,738	-15,098,169	-17.46%

NO. OF TRANSACTIONS

	2024	2025	NET CHANGE	CHANGE (%)
Daily	2,328	2,135	-193	-8.29%
Cumulative (2/1-29/1)	53,930	45,633	-8,297	-15.38%
Cumulative (2/1-29/1)	53,930	45,633	-8,297	-15.38%

SOME FINANCIAL RATIOS FOR THE ASE (29/1/2025)

SECTOR	P/E	P/BV	DIVIDEND YIELD (%)	TURNOVER (%)
FINANCIAL	8.727	0.804	5.551	0.021
SERVICES	13.356	1.331	5.828	0.104
INDUSTRY	10.913	1.812	6.225	0.031
OVERALL	9.377	1.108	6.119	0.039

STOCK PRICE INDEX WEIGHTED BY FREE FLOAT MARKET CAPITALIZATION (1999=1000)

	TUESDAY 28/01/2025	WEDNESDAY 29/01/2025	% CHANGE	
			DAY BEFORE	YTD
GENERAL	2610.5	2614.2	0.14%	5.04%
FINANCIAL	2750.4	2755.6	0.19%	3.95%
SERVICES	1762.0	1763.9	0.11%	4.17%
INDUSTRY	5993.3	5978.7	-0.24%	8.09%

STOCK PRICE INDEX WEIGHTED BY FREE FLOAT MARKET CAPITALIZATION ASE20 (2014=1000)

	1414.6	1417.3	0.19%	5.45%
--	--------	--------	-------	-------

Total Return Index ASETR (2021=1074)

	1727.7	1731.1	0.19%	5.45%
--	--------	--------	-------	-------

STOCK PRICE INDEX WEIGHTED BY MARKET CAPITALIZATION (1991=1000)

	TUESDAY 28/01/2025	WEDNESDAY 29/01/2025	% CHANGE	
			DAY BEFORE	YTD
GENERAL	5009.2	5006.0	-0.06%	8.04%
BANKS	6939.1	6946.7	0.11%	6.00%
INSURANCE	1382.4	1380.0	-0.18%	0.29%
SERVICES	894.9	891.7	-0.36%	3.25%
INDUSTRY	7546.7	7533.3	-0.18%	11.78%

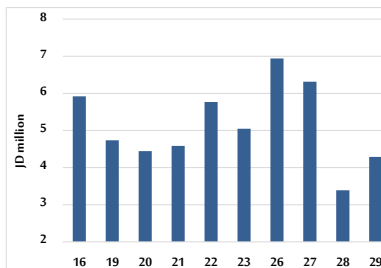
STOCK PRICE MARKET INDEX WEIGHTED BY FREE FLOAT MARKET CAP. (2012=1000)

	TUESDAY 28/01/2025	WEDNESDAY 29/01/2025	% CHANGE	
			DAY BEFORE	YTD
FIRST MARKET	1468.3	1471.0	0.18%	5.40%
SECOND MARKET	832.2	829.8	-0.28%	-0.33%

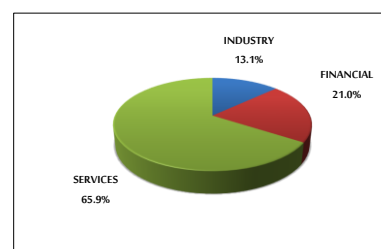
MARKET CAPITALIZATION (JD)

	18,983,202,139	18,960,659,061	-0.12%	7.39%
--	----------------	----------------	--------	-------

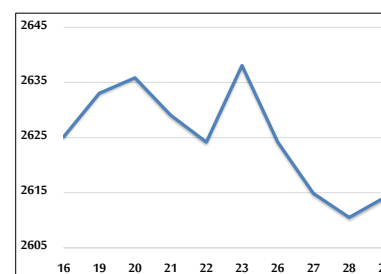
VALUE TRADED FROM 16/1 TO 29/1/2025



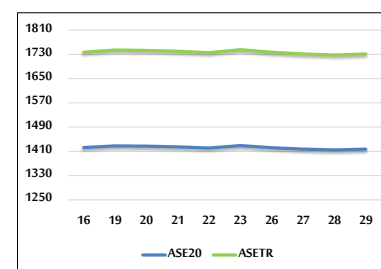
VALUE TRADED BY SECTOR WEDNESDAY 29/1/2025



GENERAL FREE FLOAT PRICE INDEX FROM 16/1 TO 29/1/2025



ASE20 and ASETR FREE FLOAT PRICE INDEX FROM 16/1 TO 29/1/2025



STOCK PRICE INDEX FROM 16/1 TO 29/1/2025

