

Daily Summary for Amman Stock Exchange

VALUE TRADED (JD)

	2022	2023	NET CHANGE	CHANGE (%)
Daily	4,136,589	8,700,002	4,563,413	110.32%
Cumulative (1/2-2/2)	10,010,689	18,319,081	8,308,392	83.00%
Cumulative (2/1-2/2)	121,595,956	208,068,857	86,472,901	71.11%

NO. OF SHARES TRADED

	2022	2023	NET CHANGE	CHANGE (%)
Daily	3,680,104	6,525,872	2,845,768	77.33%
Cumulative (1/2-2/2)	8,584,280	13,801,521	5,217,241	60.78%
Cumulative (2/1-2/2)	95,140,273	125,745,783	30,605,510	32.17%

NO. OF TRANSACTIONS

	2022	2023	NET CHANGE	CHANGE (%)
Daily	2,609	3,992	1,383	53.01%
Cumulative (1/2-2/2)	5,508	7,557	2,049	37.20%
Cumulative (2/1-2/2)	65,496	85,228	19,732	30.13%

SOME FINANCIAL RATIOS FOR THE ASE (2/2/2023)

SECTOR	P/E	P/BV	DIVIDEND YIELD (%)	TURNOVER (%)
FINANCIAL	15.192	0.909	4.560	0.088
SERVICES	20.886	1.597	3.635	0.108
INDUSTRY	13.492	2.983	3.778	0.223
OVERALL	14.505	1.369	4.211	0.107

STOCK PRICE INDEX WEIGHTED BY FREE FLOAT MARKET CAPITALIZATION (1999=1000)

	WEDNESDAY 01/02/2023	THURSDAY 02/02/2023	% CHANGE	
			DAY BEFORE	YTD
GENERAL	2692.7	2710.2	0.65%	8.34%
FINANCIAL	2801.4	2830.3	1.03%	5.13%
SERVICES	1912.4	1913.8	0.07%	9.93%
INDUSTRY	6017.9	6026.5	0.14%	13.87%

STOCK PRICE INDEX WEIGHTED BY FREE FLOAT MARKET CAPITALIZATION ASE20 (2014=1000)

	1467.1	1479.3	0.83%	9.96%
--	--------	--------	-------	-------

Total Return Index ASETR (2021=1074)

	1559.6	1572.5	0.83%	9.96%
--	--------	--------	-------	-------

STOCK PRICE INDEX WEIGHTED BY MARKET CAPITALIZATION (1991=1000)

	WEDNESDAY 01/02/2023	THURSDAY 02/02/2023	% CHANGE	
			DAY BEFORE	YTD
GENERAL	5168.4	5204.1	0.69%	10.02%
BANKS	6915.0	6999.6	1.22%	3.64%
INSURANCE	1318.8	1307.7	-0.84%	-1.80%
SERVICES	948.9	953.5	0.49%	11.91%
INDUSTRY	8049.1	8069.9	0.26%	17.26%

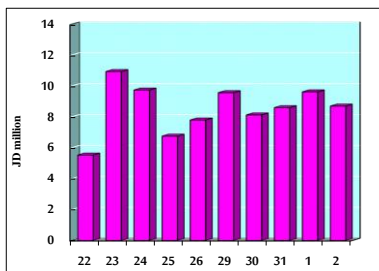
STOCK PRICE MARKET INDEX WEIGHTED BY FREE FLOAT MARKET CAP. (2012=1000)

	WEDNESDAY 01/02/2023	THURSDAY 02/02/2023	% CHANGE	
			DAY BEFORE	YTD
FIRST MARKET	1522.5	1532.6	0.66%	8.80%
SECOND MARKET	794.5	799.4	0.62%	1.39%

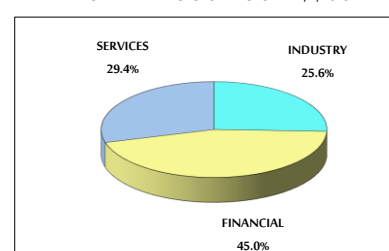
MARKET CAPITALIZATION (JD)

	19,547,993,572	19,675,883,124	0.65%	9.29%
--	----------------	----------------	-------	-------

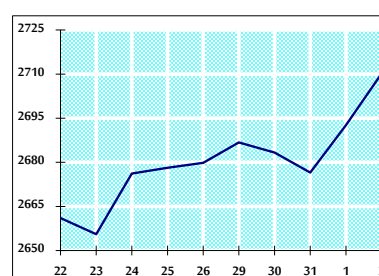
VALUE TRADED FROM 22/1 TO 2/2/2023



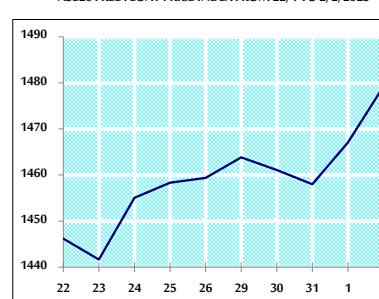
VALUE TRADED BY SECTOR THURSDAY 2/2/2023



GENERAL FREE FLOAT PRICE INDEX FROM 22/1 TO 2/2/2023



ASE20 FREE FLOAT PRICE INDEX FROM 22/1 TO 2/2/2023



GENERAL PRICE INDEX FROM 22/1 TO 2/2/2023

