

Daily Summary for Amman Stock Exchange

VALUE TRADED (JD)

	2022	2023	NET CHANGE	CHANGE (%)
Daily	5,939,081	6,755,215	816,134	13.74%
Cumulative (2/1-25/1)	95,977,491	155,662,424	59,684,933	62.19%
Cumulative (2/1-25/1)	95,977,491	155,662,424	59,684,933	62.19%

NO. OF SHARES TRADED

	2022	2023	NET CHANGE	CHANGE (%)
Daily	4,166,205	3,578,238	-587,967	-14.11%
Cumulative (2/1-25/1)	74,092,575	88,854,327	14,761,752	19.92%
Cumulative (2/1-25/1)	74,092,575	88,854,327	14,761,752	19.92%

NO. OF TRANSACTIONS

	2022	2023	NET CHANGE	CHANGE (%)
Daily	2,674	3,471	797	29.81%
Cumulative (2/1-25/1)	51,910	63,779	11,869	22.86%
Cumulative (2/1-25/1)	51,910	63,779	11,869	22.86%

SOME FINANCIAL RATIOS FOR THE ASE (25/1/2023)

SECTOR	P/E	P/BV	DIVIDEND YIELD (%)	TURNOVER (%)
FINANCIAL	14.976	0.897	4.622	0.051
SERVICES	20.316	1.559	3.722	0.067
INDUSTRY	13.456	2.975	3.788	0.092
OVERALL	14.337	1.353	4.258	0.059

STOCK PRICE INDEX WEIGHTED BY FREE FLOAT MARKET CAPITALIZATION (1999=1000)

	TUESDAY 24/01/2023	WEDNESDAY 25/01/2023	% CHANGE	
			DAY BEFORE	YTD
GENERAL	2676.2	2678.2	0.07%	7.06%
FINANCIAL	2778.4	2788.4	0.36%	3.57%
SERVICES	1904.3	1894.0	-0.54%	8.80%
INDUSTRY	6009.4	6010.0	0.01%	13.56%

STOCK PRICE INDEX WEIGHTED BY FREE FLOAT MARKET CAPITALIZATION ASE20 (2014=1000)

	1455.1	1458.3	0.22%	8.40%
--	--------	--------	-------	-------

Total Return Index ASETR (2021=1074)

	1546.8	1550.3	0.22%	8.40%
--	--------	--------	-------	-------

STOCK PRICE INDEX WEIGHTED BY MARKET CAPITALIZATION (1991=1000)

	TUESDAY 24/01/2023	WEDNESDAY 25/01/2023	% CHANGE	
			DAY BEFORE	YTD
GENERAL	5167.1	5145.8	-0.41%	8.78%
BANKS	6955.4	6920.2	-0.51%	2.47%
INSURANCE	1333.0	1324.9	-0.60%	-0.51%
SERVICES	919.4	915.9	-0.38%	7.49%
INDUSTRY	8068.4	8042.9	-0.32%	16.87%

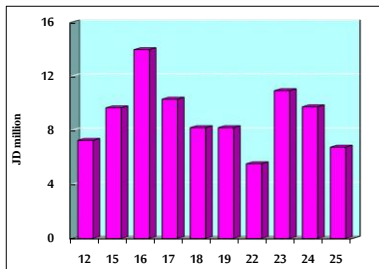
STOCK PRICE MARKET INDEX WEIGHTED BY FREE FLOAT MARKET CAP. (2012=1000)

	TUESDAY 24/01/2023	WEDNESDAY 25/01/2023	% CHANGE	
			DAY BEFORE	YTD
FIRST MARKET	1512.1	1514.5	0.16%	7.52%
SECOND MARKET	794.4	791.8	-0.33%	0.41%

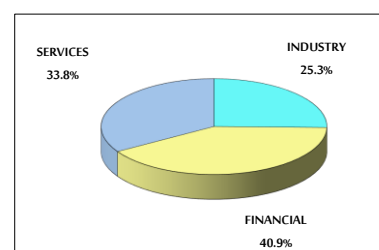
MARKET CAPITALIZATION (JD)

	19,541,890,356	19,465,578,759	-0.39%	8.12%
--	----------------	----------------	--------	-------

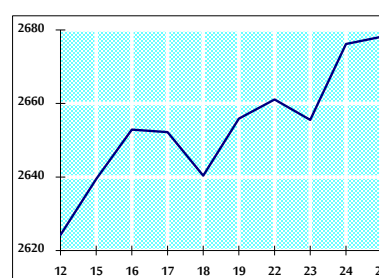
VALUE TRADED FROM 12/1 TO 25/1/2023



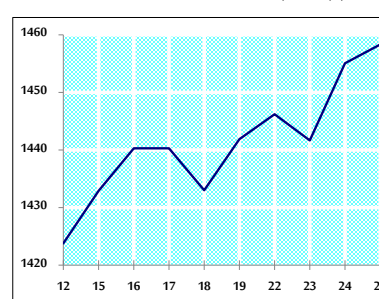
VALUE TRADED BY SECTOR WEDNESDAY 25/1/2023



GENERAL FREE FLOAT PRICE INDEX FROM 12/1 TO 25/1/2023



ASE20 FREE FLOAT PRICE INDEX FROM 12/1 TO 25/1/2023



GENERAL PRICE INDEX FROM 12/1 TO 25/1/2023

