

Daily Summary for Amman Stock Exchange

VALUE TRADED (JD)

	2022	2023	NET CHANGE	CHANGE (%)
Daily	4,417,966	5,529,214	1,111,248	25.15%
Cumulative (2/1-22/1)	81,941,650	128,235,514	46,293,864	56.50%
Cumulative (2/1-22/1)	81,941,650	128,235,514	46,293,864	56.50%

NO. OF SHARES TRADED

	2022	2023	NET CHANGE	CHANGE (%)
Daily	3,726,571	3,709,888	-16,683	-0.45%
Cumulative (2/1-22/1)	62,069,910	75,977,240	13,907,330	22.41%
Cumulative (2/1-22/1)	62,069,910	75,977,240	13,907,330	22.41%

NO. OF TRANSACTIONS

	2022	2023	NET CHANGE	CHANGE (%)
Daily	2,865	2,544	-321	-11.20%
Cumulative (2/1-22/1)	43,950	53,713	9,763	22.21%
Cumulative (2/1-22/1)	43,950	53,713	9,763	22.21%

SOME FINANCIAL RATIOS FOR THE ASE (22/1/2023)

SECTOR	P/E	P/BV	DIVIDEND YIELD (%)	TURNOVER (%)
FINANCIAL	14.915	0.893	4.641	0.054
SERVICES	20.460	1.570	3.696	0.061
INDUSTRY	13.305	2.942	3.831	0.102
OVERALL	14.258	1.346	4.282	0.061

STOCK PRICE INDEX WEIGHTED BY FREE FLOAT MARKET CAPITALIZATION (1999=1000)

	THURSDAY 19/01/2023	SUNDAY 22/01/2023	% CHANGE	
			DAY BEFORE	YTD
GENERAL	2655.9	2661.1	0.20%	6.37%
FINANCIAL	2756.1	2759.5	0.12%	2.50%
SERVICES	1917.2	1911.3	-0.31%	9.79%
INDUSTRY	5869.3	5931.3	1.06%	12.07%

STOCK PRICE INDEX WEIGHTED BY FREE FLOAT MARKET CAPITALIZATION ASE20 (2014=1000)

	1441.9	1446.2	0.30%	7.50%
--	--------	--------	-------	-------

Total Return Index ASETR (2021=1074)

	1532.8	1537.4	0.30%	7.50%
--	--------	--------	-------	-------

STOCK PRICE INDEX WEIGHTED BY MARKET CAPITALIZATION (1991=1000)

	THURSDAY 19/01/2023	SUNDAY 22/01/2023	% CHANGE	
			DAY BEFORE	YTD
GENERAL	5079.8	5117.5	0.74%	8.18%
BANKS	6880.1	6884.3	0.06%	1.93%
INSURANCE	1324.4	1325.2	0.06%	-0.49%
SERVICES	919.9	923.0	0.34%	8.33%
INDUSTRY	7838.3	7963.2	1.59%	15.71%

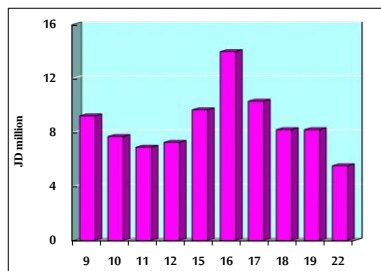
STOCK PRICE MARKET INDEX WEIGHTED BY FREE FLOAT MARKET CAP. (2012=1000)

	THURSDAY 19/01/2023	SUNDAY 22/01/2023	% CHANGE	
			DAY BEFORE	YTD
FIRST MARKET	1499.3	1503.2	0.26%	6.72%
SECOND MARKET	794.7	793.4	-0.16%	0.62%

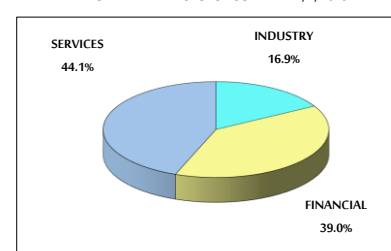
MARKET CAPITALIZATION (JD)

	19,226,476,144	19,362,869,573	0.71%	7.55%
--	----------------	----------------	-------	-------

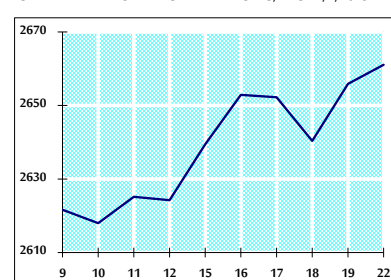
VALUE TRADED FROM 9/1 TO 22/1/2023



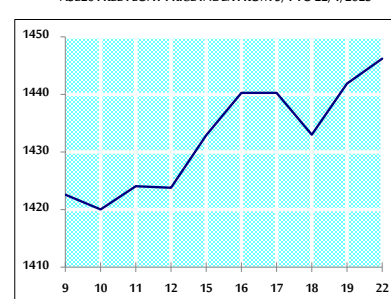
VALUE TRADED BY SECTOR SUNDAY 22/1/2023



GENERAL FREE FLOAT PRICE INDEX FROM 9/1 TO 22/1/2023



ASE20 FREE FLOAT PRICE INDEX FROM 9/1 TO 22/1/2023



GENERAL PRICE INDEX FROM 9/1 TO 22/1/2023

