

Daily Summary for Amman Stock Exchange

VALUE TRADED (JD)

	2021	2022	NET CHANGE	CHANGE (%)
Daily	8,782,855	8,826,102	43,247	0.49%
Cumulative (8/5-18/5)	70,902,657	124,147,080	53,244,423	75.10%
Cumulative (2/1-18/5)	729,318,232	687,593,283	-41,724,949	-5.72%

NO. OF SHARES TRADED

	2021	2022	NET CHANGE	CHANGE (%)
Daily	6,733,246	4,957,378	-1,775,868	-26.37%
Cumulative (8/5-18/5)	53,645,985	56,780,764	3,134,779	5.84%
Cumulative (2/1-18/5)	665,995,401	408,976,299	-257,019,102	-38.59%

NO. OF TRANSACTIONS

	2021	2022	NET CHANGE	CHANGE (%)
Daily	4,193	4,105	-88	-2.10%
Cumulative (8/5-18/5)	32,371	40,602	8,231	25.43%
Cumulative (2/1-18/5)	276,887	276,346	-541	-0.20%

SOME FINANCIAL RATIOS FOR THE ASE (18/5/2022)

SECTOR	P/E	P/BV	DIVIDEND YIELD (%)	TURNOVER (%)
FINANCIAL	14.041	0.847	4.901	0.052
SERVICES	17.237	1.310	4.417	0.187
INDUSTRY	12.281	2.805	4.083	0.054
OVERALL	13.338	1.255	4.603	0.080

STOCK PRICE INDEX WEIGHTED BY FREE FLOAT MARKET CAPITALIZATION (1999=1000)

	TUESDAY 17/05/2022	WEDNESDAY 18/05/2022	% CHANGE	
			DAY BEFORE	YTD
GENERAL	2450.3	2436.4	-0.57%	15.00%
FINANCIAL	2706.7	2684.9	-0.80%	3.09%
SERVICES	1549.8	1556.0	0.40%	17.22%
INDUSTRY	5533.3	5479.9	-0.97%	49.48%

STOCK PRICE INDEX WEIGHTED BY FREE FLOAT MARKET CAPITALIZATION ASE20 (2014=1000)

	1312.1	1302.9	-0.70%	21.27%
--	--------	--------	--------	--------

Total Return Index ASETR (2021=1074)

	1394.8	1385.0	-0.70%	28.92%
--	--------	--------	--------	--------

STOCK PRICE INDEX WEIGHTED BY MARKET CAPITALIZATION (1991=1000)

	TUESDAY 17/05/2022	WEDNESDAY 18/05/2022	% CHANGE	
			DAY BEFORE	YTD
GENERAL	4824.1	4779.2	-0.93%	19.32%
BANKS	6708.0	6630.1	-1.16%	0.97%
INSURANCE	1372.4	1378.6	0.46%	3.78%
SERVICES	770.9	764.7	-0.79%	-2.25%
INDUSTRY	7476.1	7419.3	-0.76%	57.84%

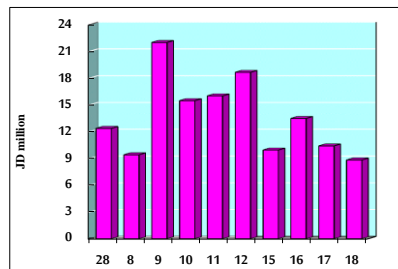
STOCK PRICE MARKET INDEX WEIGHTED BY FREE FLOAT MARKET CAP. (2012=1000)

	TUESDAY 17/05/2022	WEDNESDAY 18/05/2022	% CHANGE	
			DAY BEFORE	YTD
FIRST MARKET	1371.1	1362.9	-0.60%	19.04%
SECOND MARKET	818.1	817.1	-0.13%	-12.76%

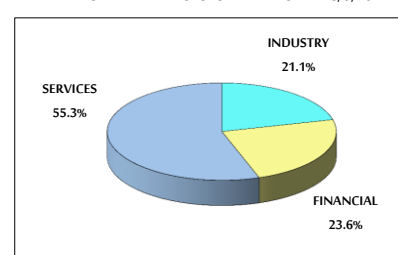
MARKET CAPITALIZATION (JD)

	18,407,958,515	18,206,943,072	-1.09%	17.50%
--	----------------	----------------	--------	--------

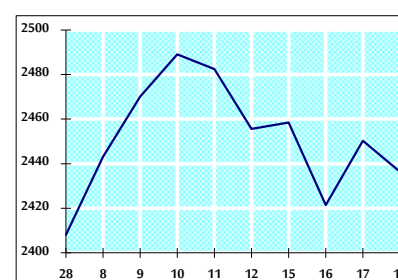
VALUE TRADED FROM 28/4 TO 18/5/2022



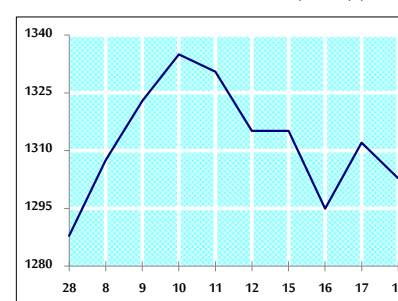
VALUE TRADED BY SECTOR WEDNESDAY 18/5/2022



GENERAL FREE FLOAT PRICE INDEX FROM 28/4 TO 18/5/2022



ASE20 FREE FLOAT PRICE INDEX FROM 28/4 TO 18/5/2022



GENERAL PRICE INDEX FROM 28/4 TO 18/5/2022

