

Daily Summary for Amman Stock Exchange

1- VALUE TRADED (JD)

	2018	2019	NET CHANGE	CHANGE (%)
Daily	4,353,702	12,581,084	8,227,382	188.97%
Cumulative(1/8-27/8)	178,303,855	82,733,812	-95,570,043	-53.60%
Cumulative(2/1-27/8)	1,064,909,428	900,543,043	-164,366,385	-15.43%

2- NO. OF SHARES TRADED

	2018	2019	NET CHANGE	CHANGE (%)
Daily	4,379,413	8,606,560	4,227,147	96.52%
Cumulative(1/8-27/8)	62,740,494	67,385,093	4,644,599	7.40%
Cumulative(2/1-27/8)	739,338,528	756,171,831	16,833,303	2.28%

3- NO. OF TRANSACTIONS

	2018	2019	NET CHANGE	CHANGE (%)
Daily	1,932	2,537	605	31.31%
Cumulative(1/8-27/8)	23,886	30,171	6,285	26.31%
Cumulative(2/1-27/8)	329,343	334,644	5,301	1.61%

4- SOME FINANCIAL RATIOS FOR THE ASE (27/8/2019)

SECTOR	P/E	P/BV	DIVIDEND YIELD (%)	TURNOVER (%)
FINANCIAL	11.113	0.993	5.786	0.139
SERVICES	16.480	1.149	5.319	0.059
INDUSTRY	19.410	1.307	4.056	0.191
OVERALL	11.855	1.086	5.622	0.127

5- STOCK PRICE INDEX WEIGHTED BY FREE FLOAT MARKET CAPITALIZATION (1999=1000)

	MONDAY 26/08/2019	TUESDAY 27/08/2019	% CHANGE	
			DAY BEFORE	YTD
GENERAL	1823.4	1823.1	-0.02%	-4.49%
FINANCIAL	2480.8	2478.5	-0.09%	-6.57%
SERVICES	1313.2	1314.5	0.10%	2.71%
INDUSTRY	1770.1	1770.4	0.02%	-5.97%

6- STOCK PRICE INDEX WEIGHTED BY MARKET CAPITALIZATION (1991=1000)

	MONDAY 26/08/2019	TUESDAY 27/08/2019	% CHANGE	
			DAY BEFORE	YTD
GENERAL	3540.7	3552.2	0.32%	-6.45%
BANKS	7299.7	7346.0	0.63%	-10.91%
INSURANCE	1333.8	1329.6	-0.31%	-3.40%
SERVICES	753.2	751.6	-0.21%	-5.67%
INDUSTRY	2473.1	2469.8	-0.14%	6.85%

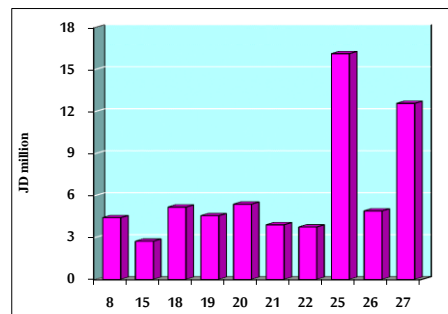
7- STOCK PRICE MARKET INDEX WEIGHTED BY FREE FLOAT MARKET CAP. (2012=1000)

	MONDAY 26/08/2019	TUESDAY 27/08/2019	% CHANGE	
			DAY BEFORE	YTD
FIRST MARKET	962.1	961.8	-0.03%	-4.89%
SECOND MARKET	835.2	834.5	-0.09%	0.35%

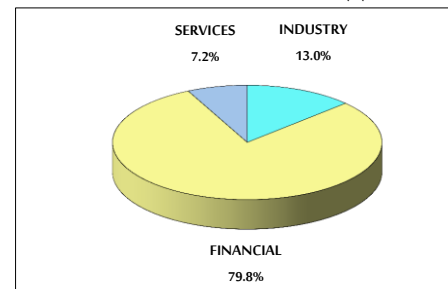
8- MARKET CAPITALIZATION (JD)

	2018	2019	NET CHANGE	CHANGE (%)
ASE MARKET CAPITALIZATION	15,054,280,080	15,097,091,518	42,811,438	0.28%

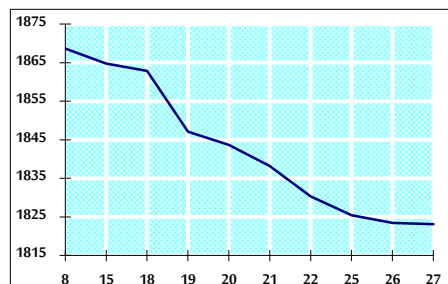
VALUE TRADED FROM 8/8 TO 27/8/2019



VALUE TRADED BY SECTOR TUESDAY 27/8/2019



GENERAL FREE FLOAT PRICE INDEX FROM 8/8 TO 27/8/2019



GENERAL PRICE INDEX FROM 8/8 TO 27/8/2019

