

Daily Summary for Amman Stock Exchange

1- VALUE TRADED (JD)

	2018	2019	NET CHANGE	CHANGE (%)
Daily	4,644,007	4,553,958	-90,049	-1.94%
Cumulative(1/7-1/7)	4,644,007	4,553,958	-90,049	-1.94%
Cumulative(2/1-1/7)	785,731,182	672,619,667	-113,111,515	-14.40%

2- NO. OF SHARES TRADED

	2018	2019	NET CHANGE	CHANGE (%)
Daily	3,905,166	5,139,450	1,234,284	31.61%
Cumulative(1/7-1/7)	3,905,166	5,139,450	1,234,284	31.61%
Cumulative(2/1-1/7)	607,894,290	539,394,126	-68,500,164	-11.27%

3- NO. OF TRANSACTIONS

	2018	2019	NET CHANGE	CHANGE (%)
Daily	1,355	2,395	1,040	76.75%
Cumulative(1/7-1/7)	1,355	2,395	1,040	76.75%
Cumulative(2/1-1/7)	275,409	245,830	-29,579	-10.74%

4- SOME FINANCIAL RATIOS FOR THE ASE (1/7/2019)

SECTOR	P/E	P/BV	DIVIDEND YIELD (%)	TURNOVER (%)
FINANCIAL	11.436	1.022	5.622	0.078
SERVICES	16.345	1.140	5.363	0.075
INDUSTRY	19.196	1.292	4.101	0.068
OVERALL	12.033	1.102	5.539	0.076

5- STOCK PRICE INDEX WEIGHTED BY FREE FLOAT MARKET CAPITALIZATION (1999=1000)

	SUNDAY 30/06/2019	MONDAY 01/07/2019	% CHANGE	
			DAY BEFORE	YTD
GENERAL	1880.1	1867.9	-0.65%	-2.15%
FINANCIAL	2576.0	2558.8	-0.67%	-3.54%
SERVICES	1309.4	1303.5	-0.45%	1.85%
INDUSTRY	1834.2	1833.5	-0.04%	-2.62%

6- STOCK PRICE INDEX WEIGHTED BY MARKET CAPITALIZATION (1991=1000)

	SUNDAY 30/06/2019	MONDAY 01/07/2019	% CHANGE	
			DAY BEFORE	YTD
GENERAL	3640.1	3605.2	-0.96%	-5.05%
BANKS	7692.2	7578.5	-1.48%	-8.09%
INSURANCE	1315.7	1321.4	0.43%	-4.00%
SERVICES	752.7	755.1	0.31%	-5.24%
INDUSTRY	2423.2	2415.2	-0.33%	4.49%

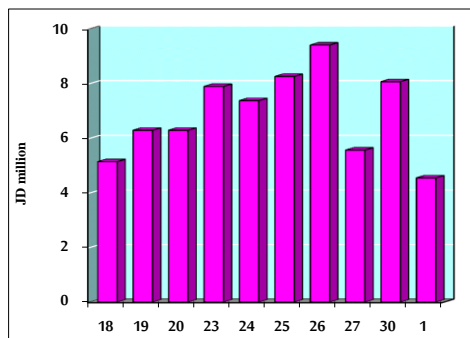
7- STOCK PRICE MARKET INDEX WEIGHTED BY FREE FLOAT MARKET CAP. (2012=1000)

	SUNDAY 30/06/2019	MONDAY 01/07/2019	% CHANGE	
			DAY BEFORE	YTD
FIRST MARKET	995.4	986.7	-0.88%	-2.43%
SECOND MARKET	853.5	858.9	0.63%	3.28%

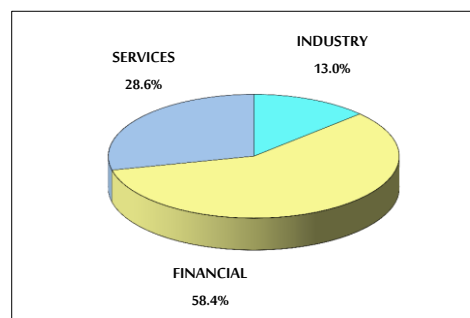
8- MARKET CAPITALIZATION (JD)

ASE MARKET CAPITALIZATION	15,450,768,860	15,321,708,902	-0.84%	-4.97%
---------------------------	----------------	----------------	--------	--------

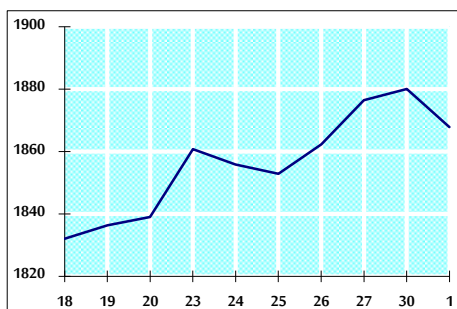
VALUE TRADED FROM 18/6 TO 1/7/2019



VALUE TRADED BY SECTOR MONDAY 1/7/2019



GENERAL FREE FLOAT PRICE INDEX FROM 18/6 TO 1/7/2019



GENERAL PRICE INDEX FROM 18/6 TO 1/7/2019

