

Daily Summary for Amman Stock Exchange

VALUE TRADED (JD)

	2023	2024	NET CHANGE	CHANGE (%)
Daily	5,412,446	2,696,709	-2,715,737	-50.18%
Cumulative (1/4-1/4)	5,412,446	2,696,709	-2,715,737	-50.18%
Cumulative (2/1-1/4)	539,550,743	288,070,417	-251,480,326	-46.61%

NO. OF SHARES TRADED

	2023	2024	NET CHANGE	CHANGE (%)
Daily	5,289,786	1,512,196	-3,777,590	-71.41%
Cumulative (1/4-1/4)	5,289,786	1,512,196	-3,777,590	-71.41%
Cumulative (2/1-1/4)	345,859,823	232,203,078	-113,656,745	-32.86%

NO. OF TRANSACTIONS

	2023	2024	NET CHANGE	CHANGE (%)
Daily	2,225	1,507	-718	-32.27%
Cumulative (1/4-1/4)	2,225	1,507	-718	-32.27%
Cumulative (2/1-1/4)	216,232	151,240	-64,992	-30.06%

SOME FINANCIAL RATIOS FOR THE ASE (1/4/2024)

SECTOR	P/E	P/BV	DIVIDEND YIELD (%)	TURNOVER (%)
FINANCIAL	8.925	0.762	5.904	0.021
SERVICES	11.991	1.341	5.521	0.045
INDUSTRY	7.380	1.399	0.295	0.012
OVERALL	8.189	0.971	4.122	0.024

STOCK PRICE INDEX WEIGHTED BY FREE FLOAT MARKET CAPITALIZATION (1999=1000)

	SUNDAY 31/03/2024	MONDAY 01/04/2024	% CHANGE	
			DAY BEFORE	YTD
GENERAL	2437.7	2437.2	-0.02%	0.25%
FINANCIAL	2647.2	2640.2	-0.26%	-3.25%
SERVICES	1749.2	1756.3	0.40%	6.83%
INDUSTRY	4768.3	4786.1	0.37%	1.43%

STOCK PRICE INDEX WEIGHTED BY FREE FLOAT MARKET CAPITALIZATION ASE20 (2014=1000)

	1316.2	1315.5	-0.05%	0.51%
--	--------	--------	--------	-------

Total Return Index ASETR (2021=1074)

	1529.9	1535.4	0.36%	3.15%
--	--------	--------	-------	-------

STOCK PRICE INDEX WEIGHTED BY MARKET CAPITALIZATION (1991=1000)

	SUNDAY 31/03/2024	MONDAY 01/04/2024	% CHANGE	
			DAY BEFORE	YTD
GENERAL	4416.9	4419.2	0.05%	0.07%
BANKS	6565.2	6555.1	-0.15%	-2.68%
INSURANCE	1309.2	1309.2	0.00%	1.89%
SERVICES	896.5	899.2	0.30%	2.34%
INDUSTRY	5871.0	5885.7	0.25%	3.14%

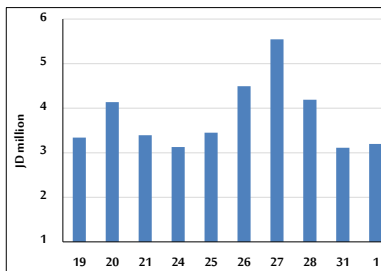
STOCK PRICE MARKET INDEX WEIGHTED BY FREE FLOAT MARKET CAP. (2012=1000)

	SUNDAY 31/03/2024	MONDAY 01/04/2024	% CHANGE	
			DAY BEFORE	YTD
FIRST MARKET	1366.4	1365.9	-0.04%	0.51%
SECOND MARKET	831.3	834.0	0.32%	-3.50%

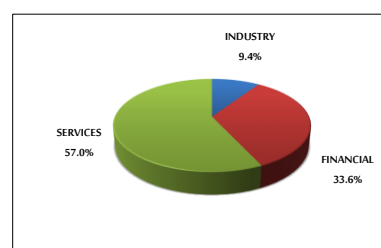
MARKET CAPITALIZATION (JD)

	16,867,049,151	16,868,548,145	0.01%	-0.42%
--	----------------	----------------	-------	--------

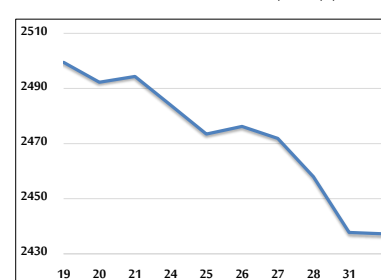
VALUE TRADED FROM 19/3 TO 1/4/2024



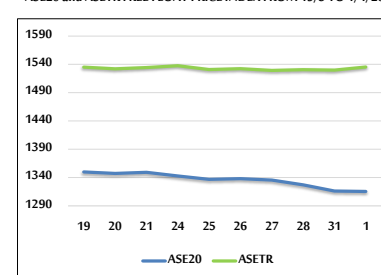
VALUE TRADED BY SECTOR MONDAY 1/4/2024



GENERAL FREE FLOAT PRICE INDEX FROM 19/3 TO 1/4/2024



ASE20 and ASETR FREE FLOAT PRICE INDEX FROM 19/3 TO 1/4/2024



STOCK PRICE INDEX FROM 19/3 TO 1/4/2024

