

## Daily Summary for Amman Stock Exchange

### VALUE TRADED (JD)

	2023	2024	NET CHANGE	CHANGE (%)
Daily	5,621,545	5,043,728	-577,817	-10.28%
Cumulative (3/3-27/3)	137,777,301	73,489,189	-64,288,112	-46.66%
Cumulative (2/1-27/3)	511,851,937	279,069,397	-232,782,540	-45.48%

### NO. OF SHARES TRADED

	2023	2024	NET CHANGE	CHANGE (%)
Daily	4,152,733	3,694,644	-458,089	-11.03%
Cumulative (3/3-27/3)	94,944,758	56,237,757	-38,707,001	-40.77%
Cumulative (2/1-27/3)	319,888,972	226,688,804	-93,200,168	-29.14%

### NO. OF TRANSACTIONS

	2023	2024	NET CHANGE	CHANGE (%)
Daily	2,335	2,041	-294	-12.59%
Cumulative (3/3-27/3)	52,889	38,291	-14,598	-27.60%
Cumulative (2/1-27/3)	206,304	145,987	-60,317	-29.24%

### SOME FINANCIAL RATIOS FOR THE ASE (27/3/2024)

SECTOR	P/E	P/BV	DIVIDEND YIELD (%)	TURNOVER (%)
FINANCIAL	9.176	0.788	5.741	0.060
SERVICES	11.640	1.349	6.214	0.059
INDUSTRY	7.254	1.536	7.455	0.054
OVERALL	8.278	1.010	6.684	0.059

### STOCK PRICE INDEX WEIGHTED BY FREE FLOAT MARKET CAPITALIZATION (1999=1000)

	TUESDAY 26/03/2024	WEDNESDAY 27/03/2024	% CHANGE	
			DAY BEFORE	YTD
GENERAL	2476.2	2471.9	-0.17%	1.67%
FINANCIAL	2713.5	2711.7	-0.06%	-0.63%
SERVICES	1737.8	1733.5	-0.24%	5.44%
INDUSTRY	4816.9	4796.3	-0.43%	1.64%

### STOCK PRICE INDEX WEIGHTED BY FREE FLOAT MARKET CAPITALIZATION ASE20 (2014=1000)

	1338.1	1335.5	-0.20%	2.04%
--	--------	--------	--------	-------

### Total Return Index ASETR (2021=1074)

	1532.3	1529.3	-0.20%	2.75%
--	--------	--------	--------	-------

### STOCK PRICE INDEX WEIGHTED BY MARKET CAPITALIZATION (1991=1000)

	TUESDAY 26/03/2024	WEDNESDAY 27/03/2024	% CHANGE	
			DAY BEFORE	YTD
GENERAL	4509.8	4500.2	-0.21%	1.90%
BANKS	6787.8	6785.7	-0.03%	0.74%
INSURANCE	1308.3	1307.2	-0.08%	1.73%
SERVICES	900.5	897.5	-0.33%	2.15%
INDUSTRY	5927.0	5901.2	-0.44%	3.41%

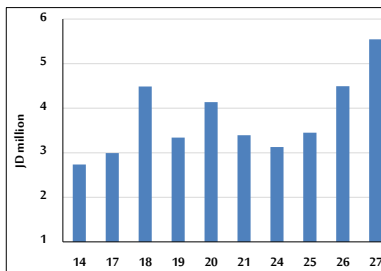
### STOCK PRICE MARKET INDEX WEIGHTED BY FREE FLOAT MARKET CAP. (2012=1000)

	TUESDAY 26/03/2024	WEDNESDAY 27/03/2024	% CHANGE	
			DAY BEFORE	YTD
FIRST MARKET	1389.0	1386.2	-0.20%	2.00%
SECOND MARKET	831.0	835.3	0.52%	-3.35%

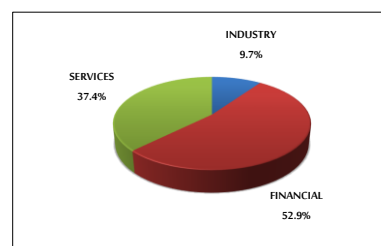
### MARKET CAPITALIZATION (JD)

	17,192,720,903	17,157,831,066	-0.20%	1.29%
--	----------------	----------------	--------	-------

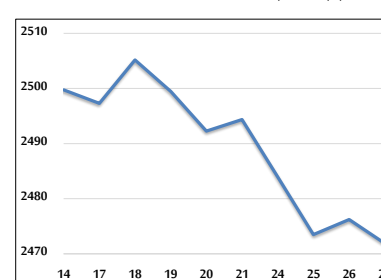
### VALUE TRADED FROM 14/3 TO 27/3/2024



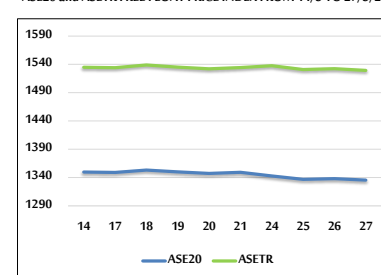
### VALUE TRADED BY SECTOR WEDNESDAY 27/3/2024



### GENERAL FREE FLOAT PRICE INDEX FROM 14/3 TO 27/3/2024



### ASE20 and ASETR FREE FLOAT PRICE INDEX FROM 14/3 TO 27/3/2024



### STOCK PRICE INDEX FROM 14/3 TO 27/3/2024

