

Daily Summary for Amman Stock Exchange

VALUE TRADED (JD)

	2023	2024	NET CHANGE	CHANGE (%)
Daily	8,458,211	2,629,359	-5,828,852	-68.91%
Cumulative (3/3-24/3)	123,771,032	61,501,764	-62,269,268	-50.31%
Cumulative (2/1-24/3)	497,845,668	267,081,972	-230,763,696	-46.35%

NO. OF SHARES TRADED

	2023	2024	NET CHANGE	CHANGE (%)
Daily	6,018,870	1,636,727	-4,382,143	-72.81%
Cumulative (3/3-24/3)	85,109,736	47,092,627	-38,017,109	-44.67%
Cumulative (2/1-24/3)	310,053,950	217,543,674	-92,510,276	-29.84%

NO. OF TRANSACTIONS

	2023	2024	NET CHANGE	CHANGE (%)
Daily	3,141	1,280	-1,861	-59.25%
Cumulative (3/3-24/3)	46,553	32,584	-13,969	-30.01%
Cumulative (2/1-24/3)	199,968	140,280	-59,688	-29.85%

SOME FINANCIAL RATIOS FOR THE ASE (24/3/2024)

SECTOR	P/E	P/BV	DIVIDEND YIELD (%)	TURNOVER (%)
FINANCIAL	9.207	0.790	5.725	0.014
SERVICES	11.675	1.355	6.153	0.069
INDUSTRY	7.264	1.538	7.454	0.026
OVERALL	8.295	1.013	6.673	0.026

STOCK PRICE INDEX WEIGHTED BY FREE FLOAT MARKET CAPITALIZATION (1999=1000)

	THURSDAY 21/03/2024	SUNDAY 24/03/2024	% CHANGE	
			DAY BEFORE	YTD
GENERAL	2494.4	2483.9	-0.42%	2.17%
FINANCIAL	2747.1	2728.3	-0.69%	-0.02%
SERVICES	1738.3	1738.4	0.00%	5.74%
INDUSTRY	4807.8	4812.1	0.09%	1.98%

STOCK PRICE INDEX WEIGHTED BY FREE FLOAT MARKET CAPITALIZATION ASE20 (2014=1000)

	1349.3	1342.7	-0.48%	2.59%
--	--------	--------	--------	-------

Total Return Index ASETR (2021=1074)

	1534.5	1537.6	0.21%	3.30%
--	--------	--------	-------	-------

STOCK PRICE INDEX WEIGHTED BY MARKET CAPITALIZATION (1991=1000)

	THURSDAY 21/03/2024	SUNDAY 24/03/2024	% CHANGE	
			DAY BEFORE	YTD
GENERAL	4515.0	4510.0	-0.11%	2.12%
BANKS	6829.9	6810.4	-0.29%	1.11%
INSURANCE	1301.4	1302.5	0.09%	1.37%
SERVICES	900.1	899.3	-0.08%	2.36%
INDUSTRY	5896.3	5903.1	0.12%	3.44%

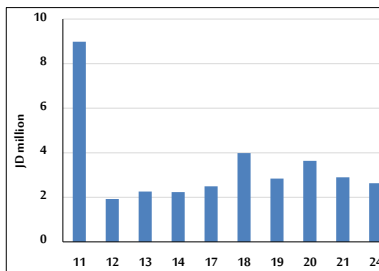
STOCK PRICE MARKET INDEX WEIGHTED BY FREE FLOAT MARKET CAP. (2012=1000)

	THURSDAY 21/03/2024	SUNDAY 24/03/2024	% CHANGE	
			DAY BEFORE	YTD
FIRST MARKET	1399.7	1393.4	-0.45%	2.54%
SECOND MARKET	837.4	833.9	-0.42%	-3.52%

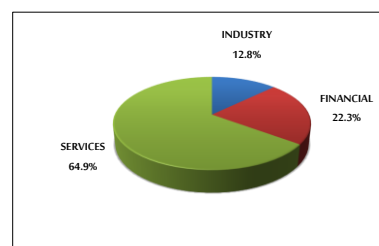
MARKET CAPITALIZATION (JD)

	17,222,680,803	17,204,789,091	-0.10%	1.57%
--	----------------	----------------	--------	-------

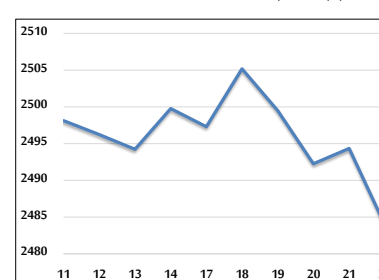
VALUE TRADED FROM 11/3 TO 24/3/2024



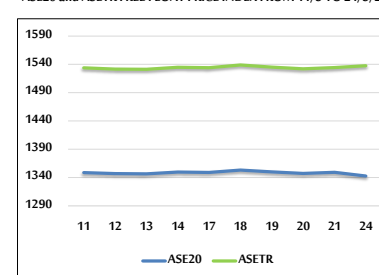
VALUE TRADED BY SECTOR SUNDAY 24/3/2024



GENERAL FREE FLOAT PRICE INDEX FROM 11/3 TO 24/3/2024



ASE20 and ASETR FREE FLOAT PRICE INDEX FROM 11/3 TO 24/3/2024



STOCK PRICE INDEX FROM 11/3 TO 24/3/2024

