

Daily Summary for Amman Stock Exchange

VALUE TRADED (JD)

	2023	2024	NET CHANGE	CHANGE (%)
Daily	8,813,550	4,058,767	-4,754,783	-53.95%
Cumulative (3/3-4/3)	12,487,066	8,385,360	-4,101,706	-32.85%
Cumulative (2/1-4/3)	386,561,702	213,965,568	-172,596,134	-44.65%

NO. OF SHARES TRADED

	2023	2024	NET CHANGE	CHANGE (%)
Daily	6,650,294	2,997,876	-3,652,418	-54.92%
Cumulative (3/3-4/3)	11,214,979	8,187,754	-3,027,225	-26.99%
Cumulative (2/1-4/3)	236,159,193	178,638,801	-57,520,392	-24.36%

NO. OF TRANSACTIONS

	2023	2024	NET CHANGE	CHANGE (%)
Daily	3,855	2,593	-1,262	-32.74%
Cumulative (3/3-4/3)	6,024	4,980	-1,044	-17.33%
Cumulative (2/1-4/3)	159,439	112,676	-46,763	-29.33%

SOME FINANCIAL RATIOS FOR THE ASE (4/3/2024)

SECTOR	P/E	P/BV	DIVIDEND YIELD (%)	TURNOVER (%)
FINANCIAL	9.062	0.777	5.818	0.035
SERVICES	11.473	1.351	6.444	0.096
INDUSTRY	7.359	1.560	7.437	0.044
OVERALL	8.242	1.009	6.743	0.048

STOCK PRICE INDEX WEIGHTED BY FREE FLOAT MARKET CAPITALIZATION (1999=1000)

	SUNDAY 03/03/2024	MONDAY 04/03/2024	% CHANGE	
			DAY BEFORE	YTD
GENERAL	2464.4	2468.9	0.18%	1.55%
FINANCIAL	2708.2	2713.6	0.20%	-0.56%
SERVICES	1706.7	1709.1	0.14%	3.96%
INDUSTRY	4876.2	4877.2	0.02%	3.36%

STOCK PRICE INDEX WEIGHTED BY FREE FLOAT MARKET CAPITALIZATION ASE20 (2014=1000)

	1330.0	1332.5	0.19%	1.81%
--	--------	--------	-------	-------

Total Return Index ASETR (2021=1074)

	1512.5	1515.4	0.19%	1.81%
--	--------	--------	-------	-------

STOCK PRICE INDEX WEIGHTED BY MARKET CAPITALIZATION (1991=1000)

	SUNDAY 03/03/2024	MONDAY 04/03/2024	% CHANGE	
			DAY BEFORE	YTD
GENERAL	4475.7	4481.4	0.13%	1.47%
BANKS	6661.7	6682.5	0.31%	-0.79%
INSURANCE	1312.3	1310.2	-0.16%	1.97%
SERVICES	895.8	894.2	-0.18%	1.77%
INDUSTRY	5966.0	5965.2	-0.01%	4.53%

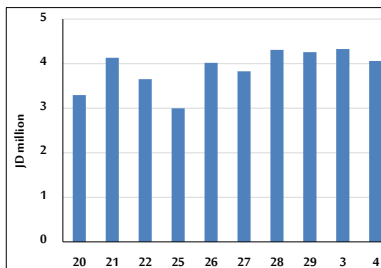
STOCK PRICE MARKET INDEX WEIGHTED BY FREE FLOAT MARKET CAP. (2012=1000)

	SUNDAY 03/03/2024	MONDAY 04/03/2024	% CHANGE	
			DAY BEFORE	YTD
FIRST MARKET	1380.5	1382.8	0.17%	1.76%
SECOND MARKET	849.7	851.6	0.23%	-1.46%

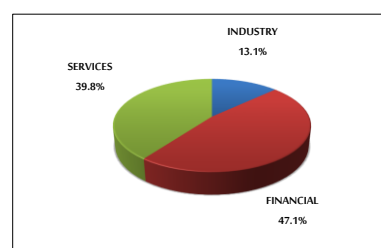
MARKET CAPITALIZATION (JD)

	17,066,931,723	17,089,812,618	0.13%	0.89%
--	----------------	----------------	-------	-------

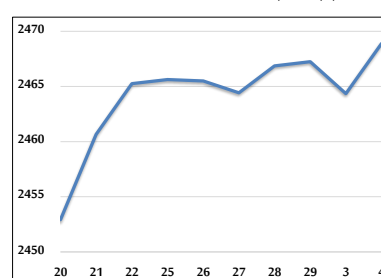
VALUE TRADED FROM 20/2 TO 4/3/2024



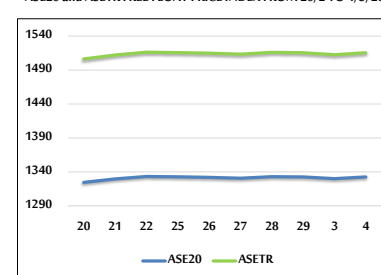
VALUE TRADED BY SECTOR MONDAY 4/3/2024



GENERAL FREE FLOAT PRICE INDEX FROM 20/2 TO 4/3/2024



ASE20 and ASETR FREE FLOAT PRICE INDEX FROM 20/2 TO 4/3/2024



STOCK PRICE INDEX FROM 20/2 TO 4/3/2024

