

Daily Summary for Amman Stock Exchange

VALUE TRADED (JD)

	2023	2024	NET CHANGE	CHANGE (%)
Daily	7,962,813	3,168,806	-4,794,007	-60.20%
Cumulative (1/2-7/2)	45,604,899	21,278,331	-24,326,568	-53.34%
Cumulative (2/1-7/2)	235,354,675	127,520,504	-107,834,171	-45.82%

NO. OF SHARES TRADED

	2023	2024	NET CHANGE	CHANGE (%)
Daily	5,330,956	2,676,892	-2,654,064	-49.79%
Cumulative (1/2-7/2)	29,989,930	15,210,747	-14,779,183	-49.28%
Cumulative (2/1-7/2)	141,934,192	108,343,738	-33,590,454	-23.67%

NO. OF TRANSACTIONS

	2023	2024	NET CHANGE	CHANGE (%)
Daily	4,162	1,792	-2,370	-56.94%
Cumulative (1/2-7/2)	19,453	10,674	-8,779	-45.13%
Cumulative (2/1-7/2)	97,124	70,146	-26,978	-27.78%

SOME FINANCIAL RATIOS FOR THE ASE (7/2/2024)

SECTOR	P/E	P/BV	DIVIDEND YIELD (%)	TURNOVER (%)
FINANCIAL	8.065	0.820	5.588	0.024
SERVICES	12.041	1.360	6.457	0.116
INDUSTRY	6.840	1.547	7.491	0.026
OVERALL	7.563	1.042	6.646	0.043

STOCK PRICE INDEX WEIGHTED BY FREE FLOAT MARKET CAPITALIZATION (1999=1000)

	TUESDAY 06/02/2024	WEDNESDAY 07/02/2024	% CHANGE	
			DAY BEFORE	YTD
GENERAL	2458.5	2470.6	0.49%	1.62%
FINANCIAL	2717.6	2728.6	0.40%	-0.01%
SERVICES	1705.0	1713.7	0.51%	4.24%
INDUSTRY	4806.3	4823.4	0.35%	2.22%

STOCK PRICE INDEX WEIGHTED BY FREE FLOAT MARKET CAPITALIZATION ASE20 (2014=1000)

	1328.0	1335.8	0.59%	2.06%
--	--------	--------	-------	-------

Total Return Index ASETR (2021=1074)

	1510.3	1519.2	0.59%	2.06%
--	--------	--------	-------	-------

STOCK PRICE INDEX WEIGHTED BY MARKET CAPITALIZATION (1991=1000)

	TUESDAY 06/02/2024	WEDNESDAY 07/02/2024	% CHANGE	
			DAY BEFORE	YTD
GENERAL	4453.2	4478.0	0.56%	1.40%
BANKS	6687.7	6727.3	0.59%	-0.12%
INSURANCE	1297.9	1298.9	0.08%	1.09%
SERVICES	894.4	899.1	0.53%	2.33%
INDUSTRY	5861.3	5891.6	0.52%	3.24%

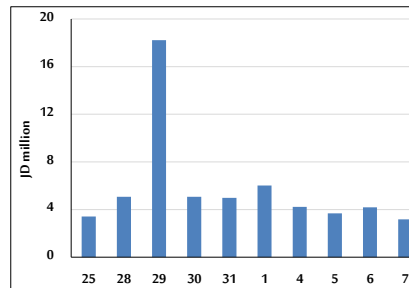
STOCK PRICE MARKET INDEX WEIGHTED BY FREE FLOAT MARKET CAP. (2012=1000)

	TUESDAY 06/02/2024	WEDNESDAY 07/02/2024	% CHANGE	
			DAY BEFORE	YTD
FIRST MARKET	1377.4	1385.3	0.58%	1.94%
SECOND MARKET	844.7	840.8	-0.47%	-2.72%

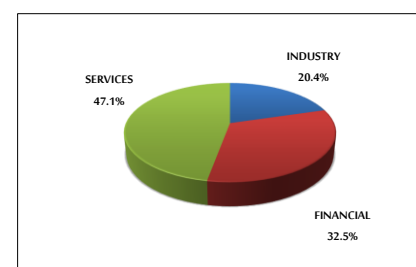
MARKET CAPITALIZATION (JD)

	17,037,129,848	17,114,991,878	0.46%	1.04%
--	----------------	----------------	-------	-------

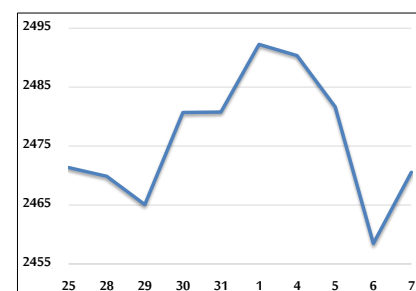
VALUE TRADED FROM 25/1 TO 7/2/2024



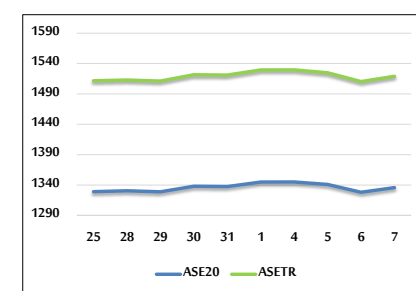
VALUE TRADED BY SECTOR WEDNESDAY 7/2/2024



GENERAL FREE FLOAT PRICE INDEX FROM 25/1 TO 7/2/2024



ASE20 and ASETR FREE FLOAT PRICE INDEX FROM 25/1 TO 7/2/2024



STOCK PRICE INDEX FROM 25/1 TO 7/2/2024

