

Daily Summary for Amman Stock Exchange

VALUE TRADED (JD)

	2022	2023	NET CHANGE	CHANGE (%)
Daily	3,566,508	3,604,277	37,769	1.06%
Cumulative (1/10-15/10)	58,968,279	56,439,613	-2,528,666	-4.29%
Cumulative (2/1-15/10)	1,627,058,365	1,230,990,288	-396,068,077	-24.34%

NO. OF SHARES TRADED

	2022	2023	NET CHANGE	CHANGE (%)
Daily	2,373,207	3,461,134	1,087,927	45.84%
Cumulative (1/10-15/10)	44,924,518	59,539,717	14,615,199	32.53%
Cumulative (2/1-15/10)	933,294,932	898,524,494	-34,770,438	-3.73%

NO. OF TRANSACTIONS

	2022	2023	NET CHANGE	CHANGE (%)
Daily	2,303	2,127	-176	-7.64%
Cumulative (1/10-15/10)	30,449	30,631	182	0.60%
Cumulative (2/1-15/10)	612,103	562,854	-49,249	-8.05%

SOME FINANCIAL RATIOS FOR THE ASE (15/10/2023)

SECTOR	P/E	P/BV	DIVIDEND YIELD (%)	TURNOVER (%)
FINANCIAL	8.785	0.801	5.753	0.045
SERVICES	11.995	1.326	6.628	0.060
INDUSTRY	5.398	1.583	7.321	0.098
OVERALL	7.007	1.021	6.690	0.055

STOCK PRICE INDEX WEIGHTED BY FREE FLOAT MARKET CAPITALIZATION (1999=1000)

	THURSDAY 12/10/2023	SUNDAY 15/10/2023	% CHANGE	
			DAY BEFORE	YTD
GENERAL	2433.7	2412.7	-0.86%	-3.55%
FINANCIAL	2678.5	2662.6	-0.60%	-1.10%
SERVICES	1690.8	1676.2	-0.86%	-3.71%
INDUSTRY	4835.2	4779.9	-1.14%	-9.68%

STOCK PRICE INDEX WEIGHTED BY FREE FLOAT MARKET CAPITALIZATION ASE20 (2014=1000)

	1308.4	1296.8	-0.89%	-3.61%
--	--------	--------	--------	--------

Total Return Index ASETR (2021=1074)

	1488.0	1474.8	-0.89%	3.12%
--	--------	--------	--------	-------

STOCK PRICE INDEX WEIGHTED BY MARKET CAPITALIZATION (1991=1000)

	THURSDAY 12/10/2023	SUNDAY 15/10/2023	% CHANGE	
			DAY BEFORE	YTD
GENERAL	4450.1	4412.5	-0.85%	-6.72%
BANKS	6568.5	6524.0	-0.68%	-3.40%
INSURANCE	1255.6	1256.0	0.03%	-5.68%
SERVICES	883.5	875.6	-0.89%	2.76%
INDUSTRY	6014.4	5949.7	-1.08%	-13.55%

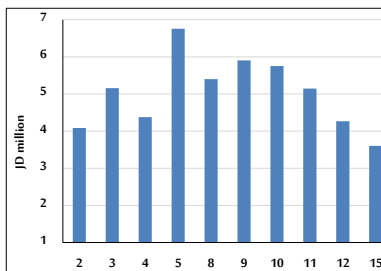
STOCK PRICE MARKET INDEX WEIGHTED BY FREE FLOAT MARKET CAP. (2012=1000)

	THURSDAY 12/10/2023	SUNDAY 15/10/2023	% CHANGE	
			DAY BEFORE	YTD
FIRST MARKET	1358.4	1346.6	-0.86%	-4.40%
SECOND MARKET	853.0	849.2	-0.45%	7.69%

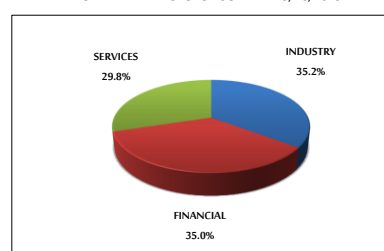
MARKET CAPITALIZATION (JD)

	17,047,964,867	16,925,718,216	-0.72%	-5.99%
--	----------------	----------------	--------	--------

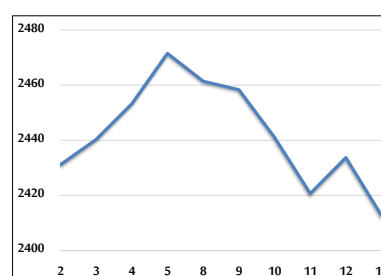
VALUE TRADED FROM 2/10 TO 15/10/2023



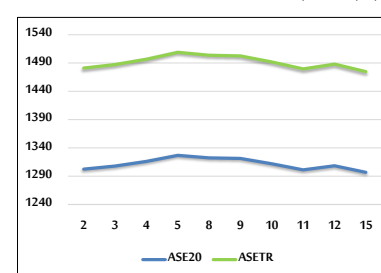
VALUE TRADED BY SECTOR SUNDAY 15/10/2023



GENERAL FREE FLOAT PRICE INDEX FROM 2/10 TO 15/10/2023



ASE20 and ASETR FREE FLOAT PRICE INDEX FROM 2/10 TO 15/10/2023



STOCK PRICE INDEX FROM 2/10 TO 15/10/2023

