

Daily Summary for Amman Stock Exchange

VALUE TRADED (JD)

	2022	2023	NET CHANGE	CHANGE (%)
Daily	7,724,840	5,144,272	-2,580,568	-33.41%
Cumulative (1/10-11/10)	47,882,028	48,570,407	688,379	1.44%
Cumulative (2/1-11/10)	1,615,972,114	1,223,121,082	-392,851,032	-24.31%

NO. OF SHARES TRADED

	2022	2023	NET CHANGE	CHANGE (%)
Daily	6,485,358	5,203,956	-1,281,402	-19.76%
Cumulative (1/10-11/10)	37,989,207	51,501,096	13,511,889	35.57%
Cumulative (2/1-11/10)	926,359,621	890,485,873	-35,873,748	-3.87%

NO. OF TRANSACTIONS

	2022	2023	NET CHANGE	CHANGE (%)
Daily	3,496	3,102	-394	-11.27%
Cumulative (1/10-11/10)	25,290	25,970	680	2.69%
Cumulative (2/1-11/10)	606,944	558,193	-48,751	-8.03%

SOME FINANCIAL RATIOS FOR THE ASE (11/10/2023)

SECTOR	P/E	P/BV	DIVIDEND YIELD (%)	TURNOVER (%)
FINANCIAL	8.773	0.800	5.761	0.062
SERVICES	12.035	1.330	6.606	0.098
INDUSTRY	5.401	1.584	7.316	0.165
OVERALL	7.008	1.021	6.689	0.083

STOCK PRICE INDEX WEIGHTED BY FREE FLOAT MARKET CAPITALIZATION (1999=1000)

	TUESDAY 10/10/2023	WEDNESDAY 11/10/2023	% CHANGE	
			DAY BEFORE	YTD
GENERAL	2441.1	2420.7	-0.84%	-3.24%
FINANCIAL	2681.2	2670.2	-0.41%	-0.82%
SERVICES	1696.2	1681.1	-0.89%	-3.43%
INDUSTRY	4886.5	4793.5	-1.90%	-9.42%

STOCK PRICE INDEX WEIGHTED BY FREE FLOAT MARKET CAPITALIZATION ASE20 (2014=1000)

	1311.8	1301.1	-0.82%	-3.29%
--	--------	--------	--------	--------

Total Return Index ASETR (2021=1074)

	1491.9	1479.7	-0.82%	3.47%
--	--------	--------	--------	-------

STOCK PRICE INDEX WEIGHTED BY MARKET CAPITALIZATION (1991=1000)

	TUESDAY 10/10/2023	WEDNESDAY 11/10/2023	% CHANGE	
			DAY BEFORE	YTD
GENERAL	4474.7	4413.4	-1.37%	-6.70%
BANKS	6585.0	6515.7	-1.05%	-3.52%
INSURANCE	1248.9	1255.6	0.53%	-5.71%
SERVICES	889.9	881.2	-0.98%	3.41%
INDUSTRY	6070.0	5952.0	-1.95%	-13.51%

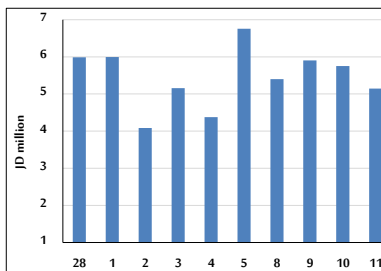
STOCK PRICE MARKET INDEX WEIGHTED BY FREE FLOAT MARKET CAP. (2012=1000)

	TUESDAY 10/10/2023	WEDNESDAY 11/10/2023	% CHANGE	
			DAY BEFORE	YTD
FIRST MARKET	1361.8	1350.9	-0.80%	-4.09%
SECOND MARKET	860.3	850.4	-1.15%	7.85%

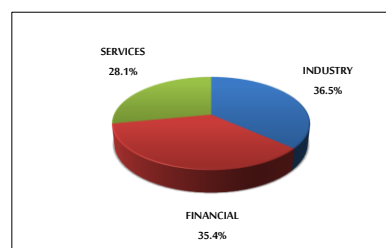
MARKET CAPITALIZATION (JD)

	17,142,106,955	16,925,824,702	-1.26%	-5.99%
--	----------------	----------------	--------	--------

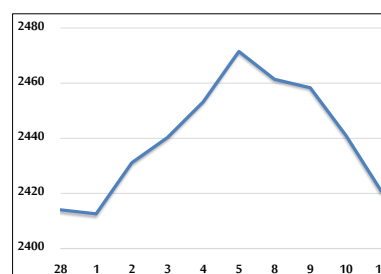
VALUE TRADED FROM 28/9 TO 11/10/2023



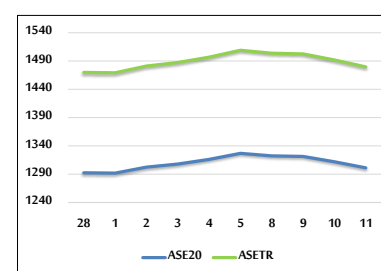
VALUE TRADED BY SECTOR WEDNESDAY 11/10/2023



GENERAL FREE FLOAT PRICE INDEX FROM 28/9 TO 11/10/2023



ASE20 and ASETR FREE FLOAT PRICE INDEX FROM 28/9 TO 11/10/2023



STOCK PRICE INDEX FROM 28/9 TO 11/10/2023

