

Daily Summary for Amman Stock Exchange

VALUE TRADED (JD)

	2022	2023	NET CHANGE	CHANGE (%)
Daily	7,746,591	5,753,226	-1,993,365	-25.73%
Cumulative (1/10-10/10)	40,157,188	43,426,135	3,268,947	8.14%
Cumulative (2/1-10/10)	1,608,247,274	1,217,976,810	-390,270,464	-24.27%

NO. OF SHARES TRADED

	2022	2023	NET CHANGE	CHANGE (%)
Daily	6,827,548	6,293,745	-533,803	-7.82%
Cumulative (1/10-10/10)	31,503,849	46,297,140	14,793,291	46.96%
Cumulative (2/1-10/10)	919,874,263	885,281,917	-34,592,346	-3.76%

NO. OF TRANSACTIONS

	2022	2023	NET CHANGE	CHANGE (%)
Daily	4,141	2,600	-1,541	-37.21%
Cumulative (1/10-10/10)	21,794	22,868	1,074	4.93%
Cumulative (2/1-10/10)	603,448	555,091	-48,357	-8.01%

SOME FINANCIAL RATIOS FOR THE ASE (10/10/2023)

SECTOR	P/E	P/BV	DIVIDEND YIELD (%)	TURNOVER (%)
FINANCIAL	8.898	0.808	5.714	0.105
SERVICES	12.147	1.343	6.546	0.057
INDUSTRY	5.506	1.615	7.177	0.143
OVERALL	7.106	1.036	6.597	0.101

STOCK PRICE INDEX WEIGHTED BY FREE FLOAT MARKET CAPITALIZATION (1999=1000)

	MONDAY 09/10/2023	TUESDAY 10/10/2023	% CHANGE	
			DAY BEFORE	YTD
GENERAL	2458.3	2441.1	-0.70%	-2.42%
FINANCIAL	2696.9	2681.2	-0.58%	-0.41%
SERVICES	1712.3	1696.2	-0.94%	-2.56%
INDUSTRY	4905.0	4886.5	-0.38%	-7.67%

STOCK PRICE INDEX WEIGHTED BY FREE FLOAT MARKET CAPITALIZATION ASE20 (2014=1000)

	1321.3	1311.8	-0.71%	-2.49%
--	--------	--------	--------	--------

Total Return Index ASETR (2021=1074)

	1502.6	1491.9	-0.71%	4.32%
--	--------	--------	--------	-------

STOCK PRICE INDEX WEIGHTED BY MARKET CAPITALIZATION (1991=1000)

	MONDAY 09/10/2023	TUESDAY 10/10/2023	% CHANGE	
			DAY BEFORE	YTD
GENERAL	4496.7	4474.7	-0.49%	-5.40%
BANKS	6624.5	6585.0	-0.60%	-2.50%
INSURANCE	1257.6	1248.9	-0.69%	-6.21%
SERVICES	893.2	889.9	-0.37%	4.44%
INDUSTRY	6092.1	6070.0	-0.36%	-11.80%

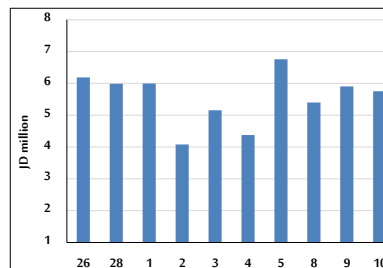
STOCK PRICE MARKET INDEX WEIGHTED BY FREE FLOAT MARKET CAP. (2012=1000)

	MONDAY 09/10/2023	TUESDAY 10/10/2023	% CHANGE	
			DAY BEFORE	YTD
FIRST MARKET	1371.1	1361.8	-0.68%	-3.32%
SECOND MARKET	862.5	860.3	-0.25%	9.11%

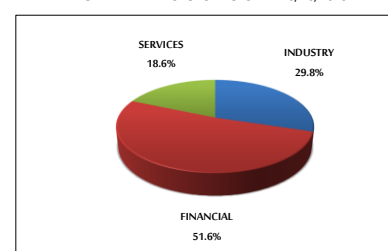
MARKET CAPITALIZATION (JD)

	17,192,114,439	17,142,106,955	-0.29%	-4.79%
--	----------------	----------------	--------	--------

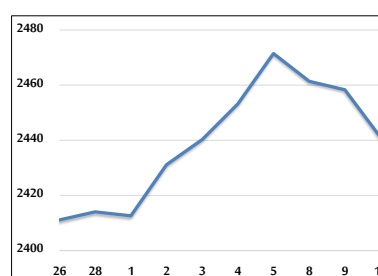
VALUE TRADED FROM 26/9 TO 10/10/2023



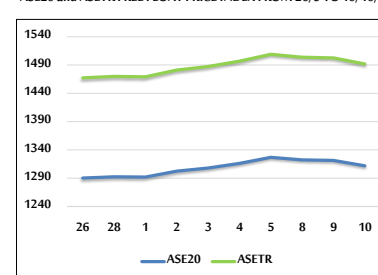
VALUE TRADED BY SECTOR TUESDAY 10/10/2023



GENERAL FREE FLOAT PRICE INDEX FROM 26/9 TO 10/10/2023



ASE20 and ASETR FREE FLOAT PRICE INDEX FROM 26/9 TO 10/10/2023



STOCK PRICE INDEX FROM 26/9 TO 10/10/2023

