

## Daily Summary for Amman Stock Exchange

### VALUE TRADED (JD)

	2022	2023	NET CHANGE	CHANGE (%)
Daily	5,695,677	5,905,368	209,691	3.68%
Cumulative (1/10-9/10)	32,410,597	37,672,909	5,262,312	16.24%
Cumulative (2/1-9/10)	1,600,500,683	1,212,223,584	-388,277,099	-24.26%

### NO. OF SHARES TRADED

	2022	2023	NET CHANGE	CHANGE (%)
Daily	5,842,202	7,889,880	2,047,678	35.05%
Cumulative (1/10-9/10)	24,676,301	40,003,395	15,327,094	62.11%
Cumulative (2/1-9/10)	913,046,715	878,988,172	-34,058,543	-3.73%

### NO. OF TRANSACTIONS

	2022	2023	NET CHANGE	CHANGE (%)
Daily	2,857	3,268	411	14.39%
Cumulative (1/10-9/10)	17,653	20,268	2,615	14.81%
Cumulative (2/1-9/10)	599,307	552,491	-46,816	-7.81%

### SOME FINANCIAL RATIOS FOR THE ASE (9/10/2023)

SECTOR	P/E	P/BV	DIVIDEND YIELD (%)	TURNOVER (%)
FINANCIAL	8.947	0.813	5.682	0.122
SERVICES	12.225	1.351	6.504	0.104
INDUSTRY	5.516	1.618	7.163	0.181
OVERALL	7.141	1.041	6.565	0.126

### STOCK PRICE INDEX WEIGHTED BY FREE FLOAT MARKET CAPITALIZATION (1999=1000)

	SUNDAY 08/10/2023	MONDAY 09/10/2023	% CHANGE	
			DAY BEFORE	YTD
GENERAL	2461.4	2458.3	-0.13%	-1.73%
FINANCIAL	2702.2	2696.9	-0.19%	0.17%
SERVICES	1709.4	1712.3	0.17%	-1.64%
INDUSTRY	4921.5	4905.0	-0.34%	-7.32%

### STOCK PRICE INDEX WEIGHTED BY FREE FLOAT MARKET CAPITALIZATION ASE20 (2014=1000)

	1322.3	1321.3	-0.08%	-1.79%
--	--------	--------	--------	--------

### Total Return Index ASETR (2021=1074)

	1503.8	1502.6	-0.08%	5.07%
--	--------	--------	--------	-------

### STOCK PRICE INDEX WEIGHTED BY MARKET CAPITALIZATION (1991=1000)

	SUNDAY 08/10/2023	MONDAY 09/10/2023	% CHANGE	
			DAY BEFORE	YTD
GENERAL	4504.4	4496.7	-0.17%	-4.94%
BANKS	6642.9	6624.5	-0.28%	-1.91%
INSURANCE	1257.0	1257.6	0.05%	-5.56%
SERVICES	891.2	893.2	0.23%	4.82%
INDUSTRY	6101.2	6092.1	-0.15%	-11.48%

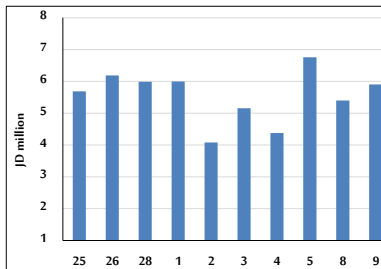
### STOCK PRICE MARKET INDEX WEIGHTED BY FREE FLOAT MARKET CAP. (2012=1000)

	SUNDAY 08/10/2023	MONDAY 09/10/2023	% CHANGE	
			DAY BEFORE	YTD
FIRST MARKET	1372.7	1371.1	-0.12%	-2.66%
SECOND MARKET	866.3	862.5	-0.44%	9.38%

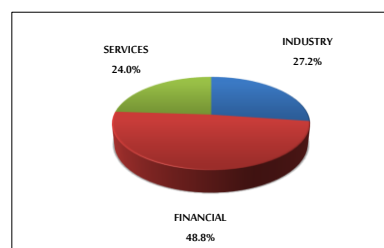
### MARKET CAPITALIZATION (JD)

	17,220,539,843	17,192,114,439	-0.17%	-4.51%
--	----------------	----------------	--------	--------

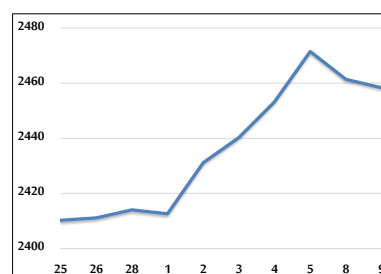
### VALUE TRADED FROM 25/9 TO 9/10/2023



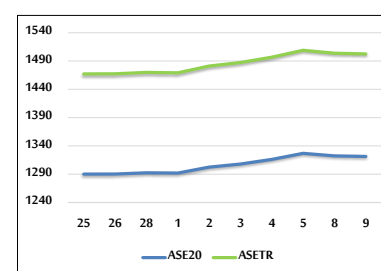
### VALUE TRADED BY SECTOR MONDAY 9/10/2023



### GENERAL FREE FLOAT PRICE INDEX FROM 25/9 TO 9/10/2023



### ASE20 and ASETR FREE FLOAT PRICE INDEX FROM 25/9 TO 9/10/2023



### STOCK PRICE INDEX FROM 25/9 TO 9/10/2023

