

## Daily Summary for Amman Stock Exchange

### VALUE TRADED (JD)

	2022	2023	NET CHANGE	CHANGE (%)
Daily	4,629,962	3,470,536	-1,159,426	-25.04%
Cumulative (1/10-16/10)	63,598,241	59,910,149	-3,688,092	-5.80%
Cumulative (2/1-16/10)	1,631,688,327	1,234,460,824	-397,227,503	-24.34%

### NO. OF SHARES TRADED

	2022	2023	NET CHANGE	CHANGE (%)
Daily	2,948,714	4,372,191	1,423,477	48.27%
Cumulative (1/10-16/10)	47,873,232	63,911,908	16,038,676	33.50%
Cumulative (2/1-16/10)	936,243,646	902,896,685	-33,346,961	-3.56%

### NO. OF TRANSACTIONS

	2022	2023	NET CHANGE	CHANGE (%)
Daily	2,858	1,801	-1,057	-36.98%
Cumulative (1/10-16/10)	33,307	32,432	-875	-2.63%
Cumulative (2/1-16/10)	614,961	564,655	-50,306	-8.18%

### SOME FINANCIAL RATIOS FOR THE ASE (16/10/2023)

SECTOR	P/E	P/BV	DIVIDEND YIELD (%)	TURNOVER (%)
FINANCIAL	8.819	0.804	5.731	0.089
SERVICES	12.019	1.328	6.615	0.024
INDUSTRY	5.429	1.592	7.278	0.041
OVERALL	7.040	1.026	6.659	0.070

### STOCK PRICE INDEX WEIGHTED BY FREE FLOAT MARKET CAPITALIZATION (1999=1000)

	SUNDAY 15/10/2023	MONDAY 16/10/2023	% CHANGE	
			DAY BEFORE	YTD
GENERAL	2412.7	2429.3	0.69%	-2.89%
FINANCIAL	2662.6	2684.4	0.82%	-0.29%
SERVICES	1676.2	1678.8	0.16%	-3.56%
INDUSTRY	4779.9	4802.5	0.47%	-9.25%

### STOCK PRICE INDEX WEIGHTED BY FREE FLOAT MARKET CAPITALIZATION ASE20 (2014=1000)

	1296.8	1306.2	0.72%	-2.91%
--	--------	--------	-------	--------

### Total Return Index ASETR (2021=1074)

	1474.8	1485.4	0.72%	3.87%
--	--------	--------	-------	-------

### STOCK PRICE INDEX WEIGHTED BY MARKET CAPITALIZATION (1991=1000)

	SUNDAY 15/10/2023	MONDAY 16/10/2023	% CHANGE	
			DAY BEFORE	YTD
GENERAL	4412.5	4433.3	0.47%	-6.28%
BANKS	6524.0	6549.0	0.38%	-3.03%
INSURANCE	1256.0	1252.6	-0.27%	-5.94%
SERVICES	875.6	879.0	0.39%	3.16%
INDUSTRY	5949.7	5987.6	0.64%	-13.00%

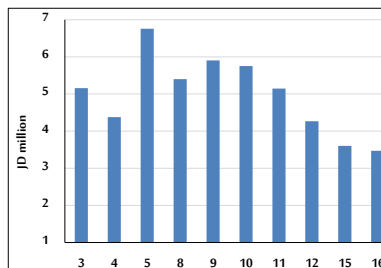
### STOCK PRICE MARKET INDEX WEIGHTED BY FREE FLOAT MARKET CAP. (2012=1000)

	SUNDAY 15/10/2023	MONDAY 16/10/2023	% CHANGE	
			DAY BEFORE	YTD
FIRST MARKET	1346.6	1356.0	0.69%	-3.73%
SECOND MARKET	849.2	852.5	0.39%	8.11%

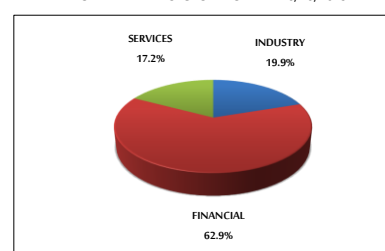
### MARKET CAPITALIZATION (JD)

	16,925,718,216	16,996,526,851	0.42%	-5.59%
--	----------------	----------------	-------	--------

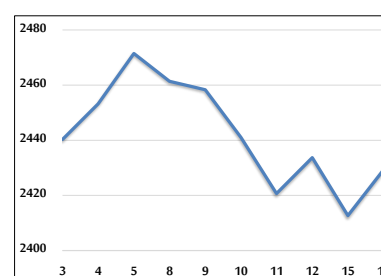
### VALUE TRADED FROM 3/10 TO 16/10/2023



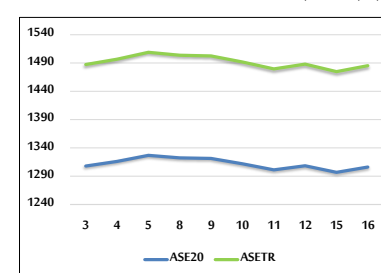
### VALUE TRADED BY SECTOR MONDAY 16/10/2023



### GENERAL FREE FLOAT PRICE INDEX FROM 3/10 TO 16/10/2023



### ASE20 and ASETR FREE FLOAT PRICE INDEX FROM 3/10 TO 16/10/2023



### STOCK PRICE INDEX FROM 3/10 TO 16/10/2023

