

## Daily Summary for Amman Stock Exchange

### VALUE TRADED (JD)

	2022	2023	NET CHANGE	CHANGE (%)
Daily	4,353,112	5,581,505	1,228,393	28.22%
Cumulative (4/6-18/6)	91,870,385	61,591,585	-30,278,800	-32.96%
Cumulative (2/1-18/6)	834,041,565	822,879,387	-11,162,178	-1.34%

### NO. OF SHARES TRADED

	2022	2023	NET CHANGE	CHANGE (%)
Daily	4,578,868	4,451,211	-127,657	-2.79%
Cumulative (4/6-18/6)	53,086,407	51,859,813	-1,226,594	-2.31%
Cumulative (2/1-18/6)	492,296,829	560,212,830	67,916,001	13.80%

### NO. OF TRANSACTIONS

	2022	2023	NET CHANGE	CHANGE (%)
Daily	2,615	2,591	-24	-0.92%
Cumulative (4/6-18/6)	33,266	34,546	1,280	3.85%
Cumulative (2/1-18/6)	334,195	358,855	24,660	7.38%

### SOME FINANCIAL RATIOS FOR THE ASE (18/6/2023)

SECTOR	P/E	P/BV	DIVIDEND YIELD (%)	TURNOVER (%)
FINANCIAL	9.640	0.788	5.841	0.057
SERVICES	9.970	1.369	6.421	0.072
INDUSTRY	5.144	1.792	6.465	0.140
OVERALL	6.888	1.080	6.413	0.071

### STOCK PRICE INDEX WEIGHTED BY FREE FLOAT MARKET CAPITALIZATION (1999=1000)

	THURSDAY 15/06/2023	SUNDAY 18/06/2023	% CHANGE	
			DAY BEFORE	YTD
GENERAL	2475.7	2471.7	-0.16%	-1.20%
FINANCIAL	2621.1	2624.3	0.12%	-2.52%
SERVICES	1756.4	1755.9	-0.03%	0.87%
INDUSTRY	5375.7	5311.7	-1.19%	0.37%

### STOCK PRICE INDEX WEIGHTED BY FREE FLOAT MARKET CAPITALIZATION ASE20 (2014=1000)

	1329.8	1328.6	-0.09%	-1.24%
--	--------	--------	--------	--------

### Total Return Index ASETR (2021=1074)

	1512.3	1511.0	-0.09%	5.65%
--	--------	--------	--------	-------

### STOCK PRICE INDEX WEIGHTED BY MARKET CAPITALIZATION (1991=1000)

	THURSDAY 15/06/2023	SUNDAY 18/06/2023	% CHANGE	
			DAY BEFORE	YTD
GENERAL	4641.6	4614.9	-0.58%	-2.44%
BANKS	6368.2	6361.3	-0.11%	-5.81%
INSURANCE	1305.8	1317.0	0.86%	-1.10%
SERVICES	900.4	897.3	-0.35%	5.31%
INDUSTRY	6908.6	6827.3	-1.18%	-0.80%

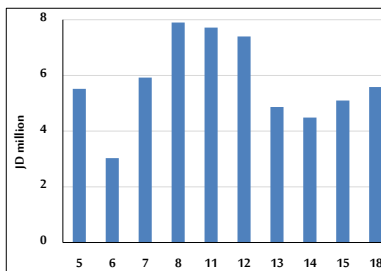
### STOCK PRICE MARKET INDEX WEIGHTED BY FREE FLOAT MARKET CAP. (2012=1000)

	THURSDAY 15/06/2023	SUNDAY 18/06/2023	% CHANGE	
			DAY BEFORE	YTD
FIRST MARKET	1382.7	1381.4	-0.10%	-1.93%
SECOND MARKET	843.1	838.3	-0.57%	6.31%

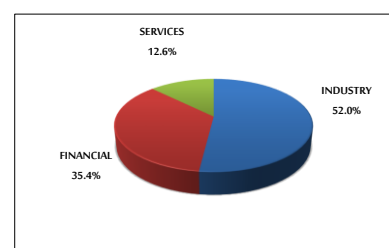
### MARKET CAPITALIZATION (JD)

	17,645,917,679	17,553,143,457	-0.53%	-2.50%
--	----------------	----------------	--------	--------

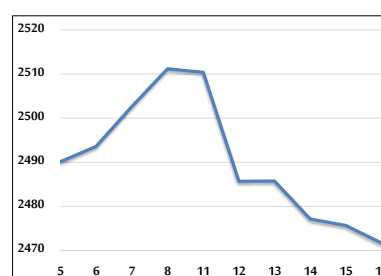
### VALUE TRADED FROM 5/6 TO 18/6/2023



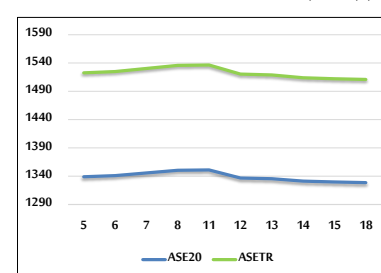
### VALUE TRADED BY SECTOR SUNDAY 18/6/2023



### GENERAL FREE FLOAT PRICE INDEX FROM 5/6 TO 18/6/2023



### ASE20 and ASETR FREE FLOAT PRICE INDEX FROM 5/6 TO 18/6/2023



### STOCK PRICE INDEX FROM 5/6 TO 18/6/2023

