

## Daily Summary for Amman Stock Exchange

### VALUE TRADED (JD)

	2022	2023	NET CHANGE	CHANGE (%)
Daily	5,100,963	5,324,295	223,332	4.38%
Cumulative (4/6-25/6)	130,447,174	96,117,114	-34,330,060	-26.32%
Cumulative (2/1-25/6)	872,618,354	857,404,916	-15,213,438	-1.74%

### NO. OF SHARES TRADED

	2022	2023	NET CHANGE	CHANGE (%)
Daily	4,327,927	5,422,335	1,094,408	25.29%
Cumulative (4/6-25/6)	83,057,306	80,755,317	-2,301,989	-2.77%
Cumulative (2/1-25/6)	522,267,728	589,108,334	66,840,606	12.80%

### NO. OF TRANSACTIONS

	2022	2023	NET CHANGE	CHANGE (%)
Daily	3,161	2,587	-574	-18.16%
Cumulative (4/6-25/6)	52,816	48,574	-4,242	-8.03%
Cumulative (2/1-25/6)	353,745	372,883	19,138	5.41%

### SOME FINANCIAL RATIOS FOR THE ASE (25/6/2023)

SECTOR	P/E	P/BV	DIVIDEND YIELD (%)	TURNOVER (%)
FINANCIAL	9.570	0.783	5.884	0.062
SERVICES	9.894	1.358	6.470	0.036
INDUSTRY	5.044	1.758	6.592	0.283
OVERALL	6.799	1.066	6.497	0.086

### STOCK PRICE INDEX WEIGHTED BY FREE FLOAT MARKET CAPITALIZATION (1999=1000)

	THURSDAY 22/06/2023	SUNDAY 25/06/2023	% CHANGE	
			DAY BEFORE	YTD
GENERAL	2446.8	2455.8	0.37%	-1.83%
FINANCIAL	2596.3	2609.5	0.51%	-3.07%
SERVICES	1759.1	1756.3	-0.16%	0.89%
INDUSTRY	5193.9	5220.5	0.51%	-1.36%

### STOCK PRICE INDEX WEIGHTED BY FREE FLOAT MARKET CAPITALIZATION ASE20 (2014=1000)

	1313.5	1317.2	0.27%	-2.09%
--	--------	--------	-------	--------

### Total Return Index ASETR (2021=1074)

	1493.8	1497.9	0.28%	4.74%
--	--------	--------	-------	-------

### STOCK PRICE INDEX WEIGHTED BY MARKET CAPITALIZATION (1991=1000)

	THURSDAY 22/06/2023	SUNDAY 25/06/2023	% CHANGE	
			DAY BEFORE	YTD
GENERAL	4542.6	4555.6	0.29%	-3.70%
BANKS	6290.4	6313.2	0.36%	-6.52%
INSURANCE	1296.0	1295.1	-0.06%	-2.74%
SERVICES	891.9	889.0	-0.32%	4.34%
INDUSTRY	6664.5	6691.1	0.40%	-2.77%

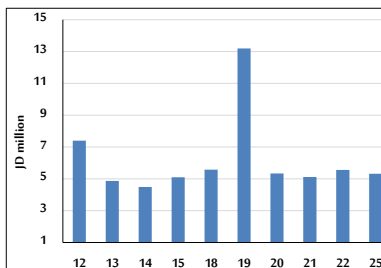
### STOCK PRICE MARKET INDEX WEIGHTED BY FREE FLOAT MARKET CAP. (2012=1000)

	THURSDAY 22/06/2023	SUNDAY 25/06/2023	% CHANGE	
			DAY BEFORE	YTD
FIRST MARKET	1365.4	1370.0	0.33%	-2.74%
SECOND MARKET	841.4	845.2	0.45%	7.19%

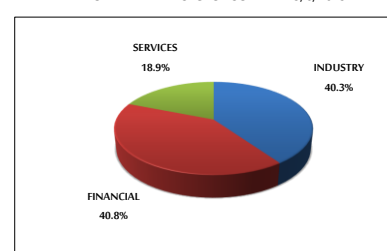
### MARKET CAPITALIZATION (JD)

	17,298,950,966	17,346,154,595	0.27%	-3.65%
--	----------------	----------------	-------	--------

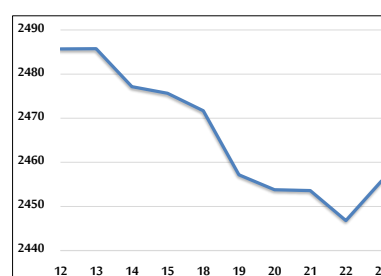
### VALUE TRADED FROM 12/6 TO 25/6/2023



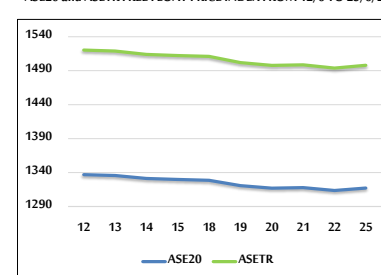
### VALUE TRADED BY SECTOR SUNDAY 25/6/2023



### GENERAL FREE FLOAT PRICE INDEX FROM 12/6 TO 25/6/2023



### ASE20 and ASETR FREE FLOAT PRICE INDEX FROM 12/6 TO 25/6/2023



### STOCK PRICE INDEX FROM 12/6 TO 25/6/2023

