

Daily Summary for Amman Stock Exchange

VALUE TRADED (JD)

	2022	2023	NET CHANGE	CHANGE (%)
Daily	9,679,135	5,113,031	-4,566,104	-47.17%
Cumulative (4/6-21/6)	118,332,746	85,237,233	-33,095,513	-27.97%
Cumulative (2/1-21/6)	860,503,926	846,525,035	-13,978,891	-1.62%

NO. OF SHARES TRADED

	2022	2023	NET CHANGE	CHANGE (%)
Daily	6,510,446	4,522,049	-1,988,397	-30.54%
Cumulative (4/6-21/6)	71,888,063	70,888,901	-999,162	-1.39%
Cumulative (2/1-21/6)	511,098,485	579,241,918	68,143,433	13.33%

NO. OF TRANSACTIONS

	2022	2023	NET CHANGE	CHANGE (%)
Daily	4,420	2,892	-1,528	-34.57%
Cumulative (4/6-21/6)	46,101	43,227	-2,874	-6.23%
Cumulative (2/1-21/6)	347,030	367,536	20,506	5.91%

SOME FINANCIAL RATIOS FOR THE ASE (21/6/2023)

SECTOR	P/E	P/BV	DIVIDEND YIELD (%)	TURNOVER (%)
FINANCIAL	9.557	0.782	5.892	0.065
SERVICES	9.952	1.366	6.432	0.056
INDUSTRY	5.049	1.759	6.586	0.131
OVERALL	6.806	1.067	6.490	0.072

STOCK PRICE INDEX WEIGHTED BY FREE FLOAT MARKET CAPITALIZATION (1999=1000)

	TUESDAY 20/06/2023	WEDNESDAY 21/06/2023	% CHANGE	
			DAY BEFORE	YTD
GENERAL	2453.8	2453.6	-0.01%	-1.92%
FINANCIAL	2605.0	2601.3	-0.14%	-3.38%
SERVICES	1767.0	1765.3	-0.10%	1.41%
INDUSTRY	5193.2	5210.8	0.34%	-1.54%

STOCK PRICE INDEX WEIGHTED BY FREE FLOAT MARKET CAPITALIZATION ASE20 (2014=1000)

	1317.0	1317.7	0.06%	-2.05%
--	--------	--------	-------	--------

Total Return Index ASETR (2021=1074)

	1497.7	1498.6	0.06%	4.78%
--	--------	--------	-------	-------

STOCK PRICE INDEX WEIGHTED BY MARKET CAPITALIZATION (1991=1000)

	TUESDAY 20/06/2023	WEDNESDAY 21/06/2023	% CHANGE	
			DAY BEFORE	YTD
GENERAL	4561.7	4559.9	-0.04%	-3.60%
BANKS	6309.3	6306.1	-0.05%	-6.63%
INSURANCE	1298.4	1296.7	-0.13%	-2.63%
SERVICES	901.5	891.9	-1.06%	4.68%
INDUSTRY	6687.3	6708.0	0.31%	-2.53%

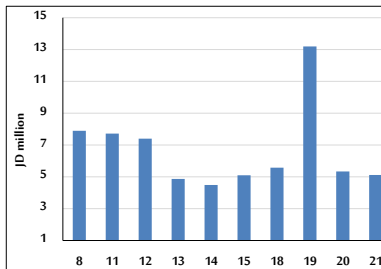
STOCK PRICE MARKET INDEX WEIGHTED BY FREE FLOAT MARKET CAP. (2012=1000)

	TUESDAY 20/06/2023	WEDNESDAY 21/06/2023	% CHANGE	
			DAY BEFORE	YTD
FIRST MARKET	1370.0	1370.0	0.00%	-2.74%
SECOND MARKET	841.1	839.8	-0.15%	6.50%

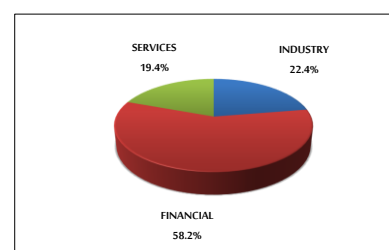
MARKET CAPITALIZATION (JD)

	17,364,703,327	17,356,612,473	-0.05%	-3.59%
--	----------------	----------------	--------	--------

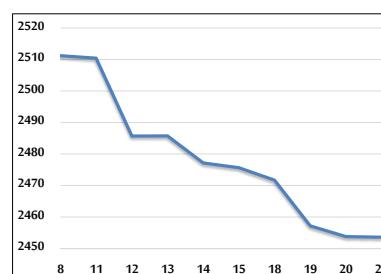
VALUE TRADED FROM 8/6 TO 21/6/2023



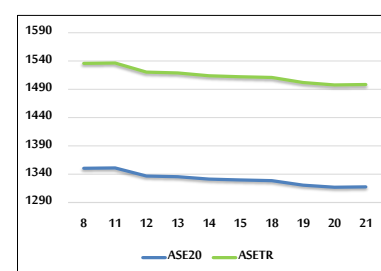
VALUE TRADED BY SECTOR WEDNESDAY 21/6/2023



GENERAL FREE FLOAT PRICE INDEX FROM 8/6 TO 21/6/2023



ASE20 and ASETR FREE FLOAT PRICE INDEX FROM 8/6 TO 21/6/2023



STOCK PRICE INDEX FROM 8/6 TO 21/6/2023

