

Daily Summary for Amman Stock Exchange

VALUE TRADED (JD)

	2022	2023	NET CHANGE	CHANGE (%)
Daily	11,511,297	5,334,463	-6,176,834	-53.66%
Cumulative (4/6-20/6)	108,653,611	80,124,202	-28,529,409	-26.26%
Cumulative (2/1-20/6)	850,824,791	841,412,004	-9,412,787	-1.11%

NO. OF SHARES TRADED

	2022	2023	NET CHANGE	CHANGE (%)
Daily	7,200,589	5,528,846	-1,671,743	-23.22%
Cumulative (4/6-20/6)	65,377,617	66,366,852	989,235	1.51%
Cumulative (2/1-20/6)	504,588,039	574,719,869	70,131,830	13.90%

NO. OF TRANSACTIONS

	2022	2023	NET CHANGE	CHANGE (%)
Daily	4,740	2,707	-2,033	-42.89%
Cumulative (4/6-20/6)	41,681	40,335	-1,346	-3.23%
Cumulative (2/1-20/6)	342,610	364,644	22,034	6.43%

SOME FINANCIAL RATIOS FOR THE ASE (20/6/2023)

SECTOR	P/E	P/BV	DIVIDEND YIELD (%)	TURNOVER (%)
FINANCIAL	9.566	0.782	5.887	0.064
SERVICES	10.020	1.375	6.389	0.109
INDUSTRY	5.036	1.755	6.604	0.178
OVERALL	6.808	1.067	6.488	0.088

STOCK PRICE INDEX WEIGHTED BY FREE FLOAT MARKET CAPITALIZATION (1999=1000)

	MONDAY 19/06/2023	TUESDAY 20/06/2023	% CHANGE	
			DAY BEFORE	YTD
GENERAL	2457.2	2453.8	-0.14%	-1.91%
FINANCIAL	2612.4	2605.0	-0.28%	-3.24%
SERVICES	1751.7	1767.0	0.87%	1.51%
INDUSTRY	5244.5	5193.2	-0.98%	-1.87%

STOCK PRICE INDEX WEIGHTED BY FREE FLOAT MARKET CAPITALIZATION ASE20 (2014=1000)

	1320.7	1317.0	-0.28%	-2.11%
--	--------	--------	--------	--------

Total Return Index ASETR (2021=1074)

	1501.9	1497.7	-0.28%	4.72%
--	--------	--------	--------	-------

STOCK PRICE INDEX WEIGHTED BY MARKET CAPITALIZATION (1991=1000)

	MONDAY 19/06/2023	TUESDAY 20/06/2023	% CHANGE	
			DAY BEFORE	YTD
GENERAL	4579.9	4561.7	-0.40%	-3.57%
BANKS	6327.8	6309.3	-0.29%	-6.58%
INSURANCE	1304.5	1298.4	-0.47%	-2.50%
SERVICES	896.1	901.5	0.60%	5.80%
INDUSTRY	6744.4	6687.3	-0.85%	-2.83%

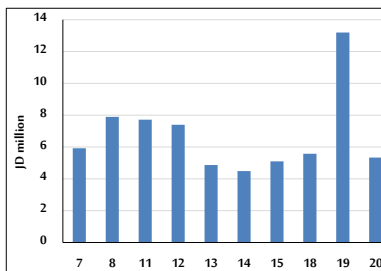
STOCK PRICE MARKET INDEX WEIGHTED BY FREE FLOAT MARKET CAP. (2012=1000)

	MONDAY 19/06/2023	TUESDAY 20/06/2023	% CHANGE	
			DAY BEFORE	YTD
FIRST MARKET	1373.0	1370.0	-0.22%	-2.74%
SECOND MARKET	836.5	841.1	0.55%	6.67%

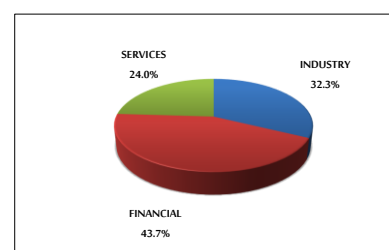
MARKET CAPITALIZATION (JD)

	17,427,925,459	17,364,703,327	-0.36%	-3.55%
--	----------------	----------------	--------	--------

VALUE TRADED FROM 7/6 TO 20/6/2023



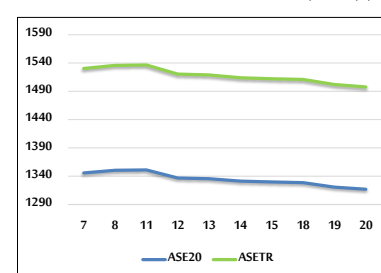
VALUE TRADED BY SECTOR TUESDAY 20/6/2023



GENERAL FREE FLOAT PRICE INDEX FROM 7/6 TO 20/6/2023



ASE20 and ASETR FREE FLOAT PRICE INDEX FROM 7/6 TO 20/6/2023



STOCK PRICE INDEX FROM 7/6 TO 20/6/2023

