

## Daily Summary for Amman Stock Exchange

### VALUE TRADED (JD)

	2022	2023	NET CHANGE	CHANGE (%)
Daily	9,060,842	5,020,365	-4,040,477	-44.59%
Cumulative (2/4-18/4)	125,747,126	73,286,623	-52,460,503	-41.72%
Cumulative (2/1-18/4)	512,695,167	607,424,920	94,729,753	18.48%

### NO. OF SHARES TRADED

	2022	2023	NET CHANGE	CHANGE (%)
Daily	5,766,616	3,687,329	-2,079,287	-36.06%
Cumulative (2/4-18/4)	54,353,250	44,911,991	-9,441,259	-17.37%
Cumulative (2/1-18/4)	326,558,650	385,482,028	58,923,378	18.04%

### NO. OF TRANSACTIONS

	2022	2023	NET CHANGE	CHANGE (%)
Daily	4,059	2,260	-1,799	-44.32%
Cumulative (2/4-18/4)	43,390	29,637	-13,753	-31.70%
Cumulative (2/1-18/4)	214,931	243,644	28,713	13.36%

### SOME FINANCIAL RATIOS FOR THE ASE (18/4/2023)

SECTOR	P/E	P/BV	DIVIDEND YIELD (%)	TURNOVER (%)
FINANCIAL	10.474	0.816	5.594	0.027
SERVICES	9.491	1.330	6.556	0.054
INDUSTRY	4.718	1.742	6.653	0.284
OVERALL	6.783	1.082	6.395	0.060

### STOCK PRICE INDEX WEIGHTED BY FREE FLOAT MARKET CAPITALIZATION (1999=1000)

	MONDAY 17/04/2023	TUESDAY 18/04/2023	% CHANGE	
			DAY BEFORE	YTD
GENERAL	2453.6	2458.5	0.20%	-1.72%
FINANCIAL	2659.2	2652.2	-0.26%	-1.49%
SERVICES	1683.1	1697.5	0.86%	-2.49%
INDUSTRY	5175.3	5216.5	0.80%	-1.43%

### STOCK PRICE INDEX WEIGHTED BY FREE FLOAT MARKET CAPITALIZATION ASE20 (2014=1000)

	1321.2	1325.3	0.31%	-1.49%
--	--------	--------	-------	--------

### Total Return Index ASETR (2021=1074)

	1476.6	1481.2	0.31%	3.57%
--	--------	--------	-------	-------

### STOCK PRICE INDEX WEIGHTED BY MARKET CAPITALIZATION (1991=1000)

	MONDAY 17/04/2023	TUESDAY 18/04/2023	% CHANGE	
			DAY BEFORE	YTD
GENERAL	4611.3	4624.3	0.28%	-2.24%
BANKS	6639.1	6613.8	-0.38%	-2.07%
INSURANCE	1283.9	1281.4	-0.19%	-3.77%
SERVICES	873.8	875.6	0.20%	2.76%
INDUSTRY	6543.9	6617.3	1.12%	-3.85%

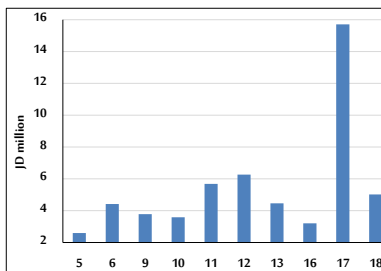
### STOCK PRICE MARKET INDEX WEIGHTED BY FREE FLOAT MARKET CAP. (2012=1000)

	MONDAY 17/04/2023	TUESDAY 18/04/2023	% CHANGE	
			DAY BEFORE	YTD
FIRST MARKET	1377.6	1380.8	0.23%	-1.98%
SECOND MARKET	788.8	790.0	0.16%	0.19%

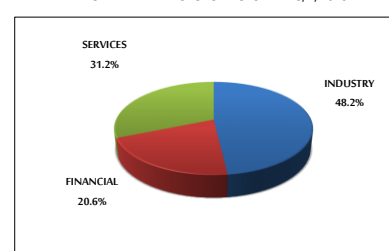
### MARKET CAPITALIZATION (JD)

	17,550,687,022	17,596,921,431	0.26%	-2.26%
--	----------------	----------------	-------	--------

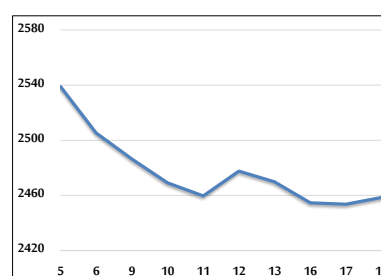
### VALUE TRADED FROM 5/4 TO 18/4/2023



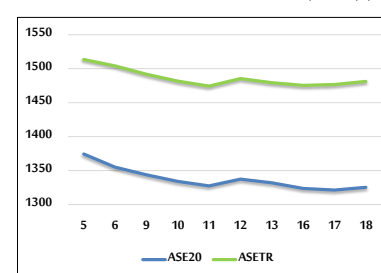
### VALUE TRADED BY SECTOR TUESDAY 18/4/2023



### GENERAL FREE FLOAT PRICE INDEX FROM 5/4 TO 18/4/2023



### ASE20 and ASETR FREE FLOAT PRICE INDEX FROM 5/4 TO 18/4/2023



### STOCK PRICE INDEX FROM 5/4 TO 18/4/2023

