

Daily Summary for Amman Stock Exchange

VALUE TRADED (JD)

	2022	2023	NET CHANGE	CHANGE (%)
Daily	9,604,587	15,706,610	6,102,023	63.53%
Cumulative (2/4-17/4)	116,686,284	68,266,258	-48,420,026	-41.50%
Cumulative (2/1-17/4)	503,634,325	602,404,555	98,770,230	19.61%

NO. OF SHARES TRADED

	2022	2023	NET CHANGE	CHANGE (%)
Daily	6,100,894	7,590,491	1,489,597	24.42%
Cumulative (2/4-17/4)	48,586,634	41,224,662	-7,361,972	-15.15%
Cumulative (2/1-17/4)	320,792,034	381,794,699	61,002,665	19.02%

NO. OF TRANSACTIONS

	2022	2023	NET CHANGE	CHANGE (%)
Daily	4,007	3,145	-862	-21.51%
Cumulative (2/4-17/4)	39,331	27,377	-11,954	-30.39%
Cumulative (2/1-17/4)	210,872	241,384	30,512	14.47%

SOME FINANCIAL RATIOS FOR THE ASE (17/4/2023)

SECTOR	P/E	P/BV	DIVIDEND YIELD (%)	TURNOVER (%)
FINANCIAL	10.509	0.819	5.576	0.037
SERVICES	9.450	1.324	6.537	0.428
INDUSTRY	4.670	1.724	6.722	0.100
OVERALL	6.764	1.079	6.405	0.124

STOCK PRICE INDEX WEIGHTED BY FREE FLOAT MARKET CAPITALIZATION (1999=1000)

	SUNDAY 16/04/2023	MONDAY 17/04/2023	% CHANGE	
			DAY BEFORE	YTD
GENERAL	2454.6	2453.6	-0.04%	-1.92%
FINANCIAL	2655.2	2659.2	0.15%	-1.23%
SERVICES	1707.9	1683.1	-1.45%	-3.32%
INDUSTRY	5127.1	5175.3	0.94%	-2.21%

STOCK PRICE INDEX WEIGHTED BY FREE FLOAT MARKET CAPITALIZATION ASE20 (2014=1000)

	1323.6	1321.2	-0.18%	-1.79%
--	--------	--------	--------	--------

Total Return Index ASETR (2021=1074)

	1475.4	1476.6	0.08%	3.25%
--	--------	--------	-------	-------

STOCK PRICE INDEX WEIGHTED BY MARKET CAPITALIZATION (1991=1000)

	SUNDAY 16/04/2023	MONDAY 17/04/2023	% CHANGE	
			DAY BEFORE	YTD
GENERAL	4598.2	4611.3	0.29%	-2.52%
BANKS	6634.5	6639.1	0.07%	-1.70%
INSURANCE	1281.1	1283.9	0.21%	-3.59%
SERVICES	878.8	873.8	-0.57%	2.55%
INDUSTRY	6489.6	6543.9	0.84%	-4.91%

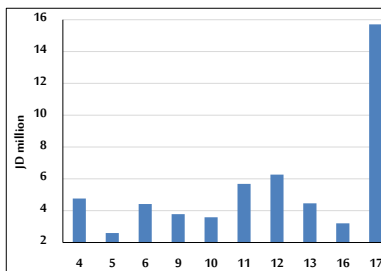
STOCK PRICE MARKET INDEX WEIGHTED BY FREE FLOAT MARKET CAP. (2012=1000)

	SUNDAY 16/04/2023	MONDAY 17/04/2023	% CHANGE	
			DAY BEFORE	YTD
FIRST MARKET	1378.5	1377.6	-0.06%	-2.20%
SECOND MARKET	789.5	788.8	-0.10%	0.03%

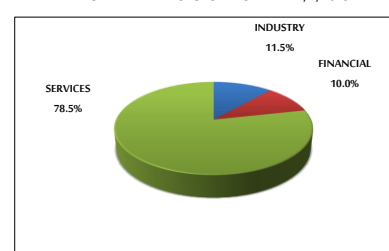
MARKET CAPITALIZATION (JD)

	17,516,165,605	17,550,687,022	0.20%	-2.52%
--	----------------	----------------	-------	--------

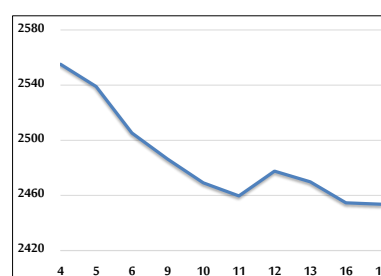
VALUE TRADED FROM 4/4 TO 17/4/2023



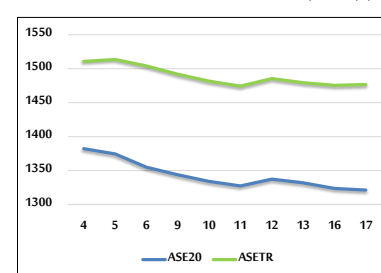
VALUE TRADED BY SECTOR MONDAY 17/4/2023



GENERAL FREE FLOAT PRICE INDEX FROM 4/4 TO 17/4/2023



ASE20 and ASETR FREE FLOAT PRICE INDEX FROM 4/4 TO 17/4/2023



STOCK PRICE INDEX FROM 4/4 TO 17/4/2023

