

Daily Summary for Amman Stock Exchange

VALUE TRADED (JD)

	2022	2023	NET CHANGE	CHANGE (%)
Daily	5,762,478	13,417,918	7,655,440	132.85%
Cumulative (1/2-9/2)	42,957,211	70,463,448	27,506,237	64.03%
Cumulative (2/1-9/2)	154,542,478	260,213,224	105,670,746	68.38%

NO. OF SHARES TRADED

	2022	2023	NET CHANGE	CHANGE (%)
Daily	4,994,234	7,949,788	2,955,554	59.18%
Cumulative (1/2-9/2)	32,500,894	44,590,107	12,089,213	37.20%
Cumulative (2/1-9/2)	119,056,887	156,534,369	37,477,482	31.48%

NO. OF TRANSACTIONS

	2022	2023	NET CHANGE	CHANGE (%)
Daily	2,563	5,341	2,778	108.39%
Cumulative (1/2-9/2)	17,413	29,711	12,298	70.63%
Cumulative (2/1-9/2)	77,401	107,382	29,981	38.73%

SOME FINANCIAL RATIOS FOR THE ASE (9/2/2023)

SECTOR	P/E	P/BV	DIVIDEND YIELD (%)	TURNOVER (%)
FINANCIAL	14.101	0.870	4.464	0.088
SERVICES	14.567	1.622	3.581	0.281
INDUSTRY	14.489	3.209	3.512	0.112
OVERALL	13.820	1.372	4.028	0.130

STOCK PRICE INDEX WEIGHTED BY FREE FLOAT MARKET CAPITALIZATION (1999=1000)

	WEDNESDAY 08/02/2023	THURSDAY 09/02/2023	% CHANGE	
			DAY BEFORE	YTD
GENERAL	2739.4	2725.9	-0.49%	8.97%
FINANCIAL	2818.4	2803.9	-0.51%	4.15%
SERVICES	1922.8	1911.0	-0.61%	9.78%
INDUSTRY	6391.6	6379.0	-0.20%	20.53%

STOCK PRICE INDEX WEIGHTED BY FREE FLOAT MARKET CAPITALIZATION ASE20 (2014=1000)

	1494.7	1487.7	-0.47%	10.58%
--	--------	--------	--------	--------

Total Return Index ASETR (2021=1074)

	1588.9	1581.5	-0.47%	10.58%
--	--------	--------	--------	--------

STOCK PRICE INDEX WEIGHTED BY MARKET CAPITALIZATION (1991=1000)

	WEDNESDAY 08/02/2023	THURSDAY 09/02/2023	% CHANGE	
			DAY BEFORE	YTD
GENERAL	5354.4	5356.2	0.03%	13.23%
BANKS	6949.9	6922.6	-0.39%	2.50%
INSURANCE	1300.8	1292.2	-0.66%	-2.97%
SERVICES	972.7	974.7	0.21%	14.39%
INDUSTRY	8631.6	8667.2	0.41%	25.94%

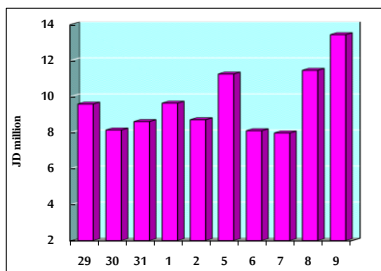
STOCK PRICE MARKET INDEX WEIGHTED BY FREE FLOAT MARKET CAP. (2012=1000)

	WEDNESDAY 08/02/2023	THURSDAY 09/02/2023	% CHANGE	
			DAY BEFORE	YTD
FIRST MARKET	1548.4	1541.1	-0.47%	9.41%
SECOND MARKET	809.9	805.3	-0.56%	2.13%

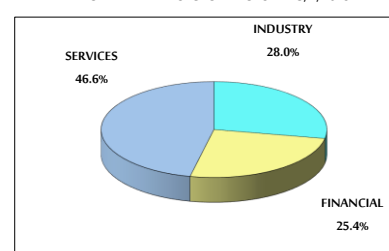
MARKET CAPITALIZATION (JD)

	20,216,888,439	20,232,187,078	0.08%	12.38%
--	----------------	----------------	-------	--------

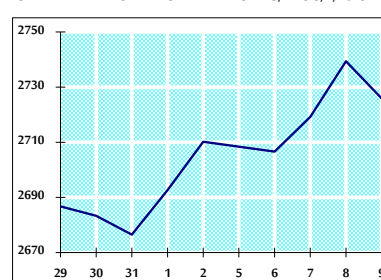
VALUE TRADED FROM 29/1 TO 9/2/2023



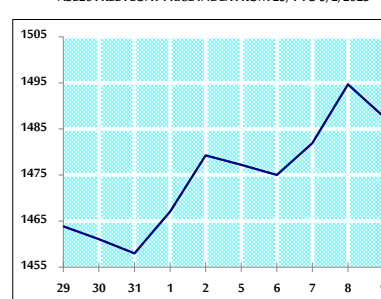
VALUE TRADED BY SECTOR THURSDAY 9/2/2023



GENERAL FREE FLOAT PRICE INDEX FROM 29/1 TO 9/2/2023



ASE20 FREE FLOAT PRICE INDEX FROM 29/1 TO 9/2/2023



GENERAL PRICE INDEX FROM 29/1 TO 9/2/2023

