

Daily Summary for Amman Stock Exchange

VALUE TRADED (JD)

	2022	2023	NET CHANGE	CHANGE (%)
Daily	6,577,993	11,234,901	4,656,908	70.80%
Cumulative (1/2-5/2)	16,588,682	29,553,982	12,965,300	78.16%
Cumulative (2/1-5/2)	128,173,949	219,303,758	91,129,809	71.10%

NO. OF SHARES TRADED

	2022	2023	NET CHANGE	CHANGE (%)
Daily	4,454,791	5,595,281	1,140,490	25.60%
Cumulative (1/2-5/2)	13,039,071	19,396,802	6,357,731	48.76%
Cumulative (2/1-5/2)	99,595,064	131,341,064	31,746,000	31.88%

NO. OF TRANSACTIONS

	2022	2023	NET CHANGE	CHANGE (%)
Daily	2,695	3,728	1,033	38.33%
Cumulative (1/2-5/2)	8,203	11,285	3,082	37.57%
Cumulative (2/1-5/2)	68,191	88,956	20,765	30.45%

SOME FINANCIAL RATIOS FOR THE ASE (5/2/2023)

SECTOR	P/E	P/BV	DIVIDEND YIELD (%)	TURNOVER (%)
FINANCIAL	14.878	0.906	4.578	0.089
SERVICES	15.097	1.600	3.629	0.084
INDUSTRY	13.588	3.007	3.748	0.124
OVERALL	13.852	1.371	4.204	0.092

STOCK PRICE INDEX WEIGHTED BY FREE FLOAT MARKET CAPITALIZATION (1999=1000)

	THURSDAY 02/02/2023	SUNDAY 05/02/2023	% CHANGE	
			DAY BEFORE	YTD
GENERAL	2710.2	2708.4	-0.07%	8.27%
FINANCIAL	2830.3	2822.0	-0.29%	4.82%
SERVICES	1913.8	1909.9	-0.20%	9.71%
INDUSTRY	6026.5	6074.1	0.79%	14.77%

STOCK PRICE INDEX WEIGHTED BY FREE FLOAT MARKET CAPITALIZATION ASE20 (2014=1000)

	1479.3	1477.2	-0.14%	9.80%
--	--------	--------	--------	-------

Total Return Index ASETR (2021=1074)

	1572.5	1570.4	-0.14%	9.80%
--	--------	--------	--------	-------

STOCK PRICE INDEX WEIGHTED BY MARKET CAPITALIZATION (1991=1000)

	THURSDAY 02/02/2023	SUNDAY 05/02/2023	% CHANGE	
			DAY BEFORE	YTD
GENERAL	5204.1	5212.9	0.17%	10.20%
BANKS	6999.6	6964.2	-0.51%	3.12%
INSURANCE	1307.7	1311.9	0.32%	-1.49%
SERVICES	953.5	958.3	0.51%	12.47%
INDUSTRY	8069.9	8130.3	0.75%	18.14%

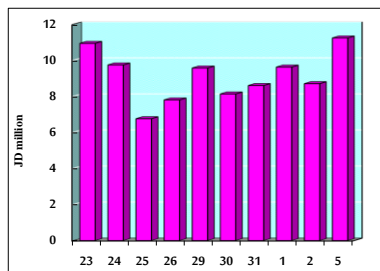
STOCK PRICE MARKET INDEX WEIGHTED BY FREE FLOAT MARKET CAP. (2012=1000)

	THURSDAY 02/02/2023	SUNDAY 05/02/2023	% CHANGE	
			DAY BEFORE	YTD
FIRST MARKET	1532.6	1531.2	-0.09%	8.70%
SECOND MARKET	799.4	801.0	0.20%	1.59%

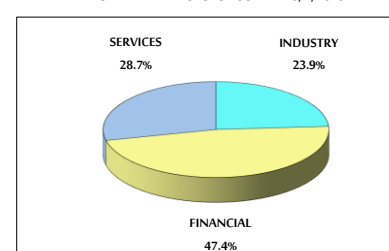
MARKET CAPITALIZATION (JD)

	19,675,883,124	19,706,753,797	0.16%	9.46%
--	----------------	----------------	-------	-------

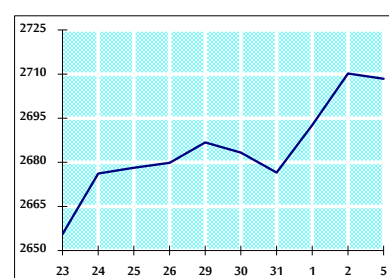
VALUE TRADED FROM 23/1 TO 5/2/2023



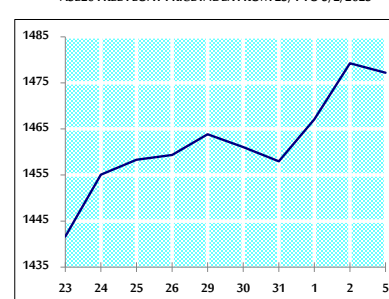
VALUE TRADED BY SECTOR SUNDAY 5/2/2023



GENERAL FREE FLOAT PRICE INDEX FROM 23/1 TO 5/2/2023



ASE20 FREE FLOAT PRICE INDEX FROM 23/1 TO 5/2/2023



GENERAL PRICE INDEX FROM 23/1 TO 5/2/2023

