

## Daily Summary for Amman Stock Exchange

### VALUE TRADED (JD)

	2021	2022	NET CHANGE	CHANGE (%)
Daily	8,159,161	12,428,294	4,269,133	52.32%
Cumulative (3/4-11/4)	52,563,699	58,163,577	5,599,878	10.65%
Cumulative (2/1-11/4)	578,137,175	445,111,618	-133,025,557	-23.01%

### NO. OF SHARES TRADED

	2021	2022	NET CHANGE	CHANGE (%)
Daily	6,759,084	3,080,125	-3,678,959	-54.43%
Cumulative (3/4-11/4)	49,570,660	23,941,278	-25,629,382	-51.70%
Cumulative (2/1-11/4)	536,285,169	296,146,678	-240,138,491	-44.78%

### NO. OF TRANSACTIONS

	2021	2022	NET CHANGE	CHANGE (%)
Daily	3,072	3,529	457	14.88%
Cumulative (3/4-11/4)	23,082	20,136	-2,946	-12.76%
Cumulative (2/1-11/4)	208,219	191,677	-16,542	-7.94%

### SOME FINANCIAL RATIOS FOR THE ASE (11/4/2022)

SECTOR	P/E	P/BV	DIVIDEND YIELD (%)	TURNOVER (%)
FINANCIAL	13.684	0.822	5.013	0.039
SERVICES	16.085	1.209	4.489	0.072
INDUSTRY	11.630	2.607	4.307	0.071
OVERALL	12.718	1.194	4.775	0.050

### STOCK PRICE INDEX WEIGHTED BY FREE FLOAT MARKET CAPITALIZATION (1999=1000)

	SUNDAY 10/04/2022	MONDAY 11/04/2022	% CHANGE	
			DAY BEFORE	YTD
GENERAL	2340.0	2311.8	-1.21%	9.11%
FINANCIAL	2616.8	2616.1	-0.03%	0.45%
SERVICES	1350.2	1358.0	0.58%	2.30%
INDUSTRY	5655.5	5350.2	-5.40%	45.95%

### STOCK PRICE INDEX WEIGHTED BY FREE FLOAT MARKET CAPITALIZATION ASE20 (2014=1000)

	1243.8	1225.9	-1.44%	14.11%
--	--------	--------	--------	--------

### Total Return Index ASETR (2021=1074)

	1279.2	1260.8	-1.44%	17.35%
--	--------	--------	--------	--------

### STOCK PRICE INDEX WEIGHTED BY MARKET CAPITALIZATION (1991=1000)

	SUNDAY 10/04/2022	MONDAY 11/04/2022	% CHANGE	
			DAY BEFORE	YTD
GENERAL	4678.0	4555.9	-2.61%	13.75%
BANKS	6443.3	6431.0	-0.19%	-2.06%
INSURANCE	1315.5	1302.2	-1.00%	-1.97%
SERVICES	749.5	753.2	0.49%	-3.73%
INDUSTRY	7312.9	6888.5	-5.80%	46.55%

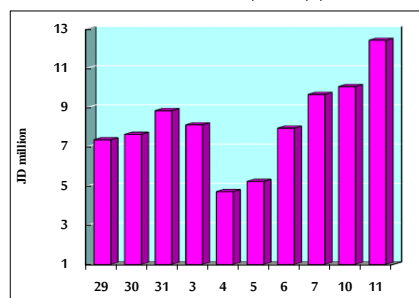
### STOCK PRICE MARKET INDEX WEIGHTED BY FREE FLOAT MARKET CAP. (2012=1000)

	SUNDAY 10/04/2022	MONDAY 11/04/2022	% CHANGE	
			DAY BEFORE	YTD
FIRST MARKET	1305.7	1289.4	-1.25%	12.62%
SECOND MARKET	794.7	796.9	0.28%	-14.91%

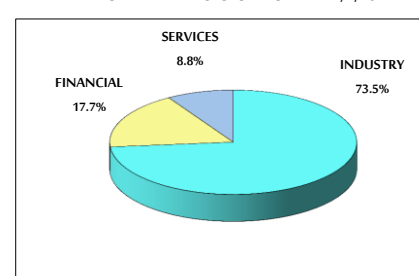
### MARKET CAPITALIZATION (JD)

	17,871,669,722	17,432,003,337	-2.46%	12.50%
--	----------------	----------------	--------	--------

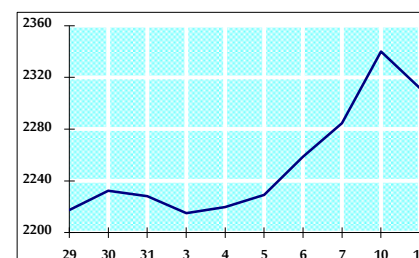
### VALUE TRADED FROM 29/3 TO 11/4/2022



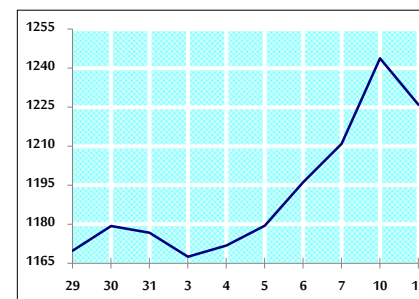
### VALUE TRADED BY SECTOR MONDAY 11/4/2022



### GENERAL FREE FLOAT PRICE INDEX FROM 29/3 TO 11/4/2022



### ASE20 FREE FLOAT PRICE INDEX FROM 29/3 TO 11/4/2022



### GENERAL PRICE INDEX FROM 29/3 TO 11/4/2022

