

### Daily Summary for Amman Stock Exchange

VALUE TRADED (JD)

	2021	2022	NET CHANGE	CHANGE (%)
Daily	5,446,680	9,604,587	4,157,907	76.34%
Cumulative (3/4-18/4)	81,785,463	116,686,284	34,900,821	42.67%
Cumulative (2/1-18/4)	607,358,939	503,634,325	-103,724,614	-17.08%

NO. OF SHARES TRADED

	2021	2022	NET CHANGE	CHANGE (%)
Daily	5,602,345	6,100,894	498,549	8.90%
Cumulative (3/4-18/4)	78,825,289	48,586,634	-30,238,655	-38.36%
Cumulative (2/1-18/4)	565,539,798	320,792,034	-244,747,764	-43.28%

NO. OF TRANSACTIONS

	2021	2022	NET CHANGE	CHANGE (%)
Daily	2,716	4,007	1,291	47.53%
Cumulative (3/4-18/4)	36,536	39,331	2,795	7.65%
Cumulative (2/1-18/4)	221,673	210,872	-10,801	-4.87%

SOME FINANCIAL RATIOS FOR THE ASE (18/4/2022)

SECTOR	P/E	P/BV	DIVIDEND YIELD (%)	TURNOVER (%)
FINANCIAL	14.256	0.856	4.812	0.092
SERVICES	16.463	1.251	4.399	0.151
INDUSTRY	11.948	2.679	4.195	0.036
OVERALL	13.165	1.238	4.614	0.098

STOCK PRICE INDEX WEIGHTED BY FREE FLOAT MARKET CAPITALIZATION (1999=1000)

	SUNDAY 17/04/2022	MONDAY 18/04/2022	% CHANGE	
			DAY BEFORE	YTD
GENERAL	2449.4	2437.0	-0.51%	15.02%
FINANCIAL	2772.3	2758.5	-0.50%	5.91%
SERVICES	1415.8	1424.2	0.59%	7.29%
INDUSTRY	5673.6	5592.7	-1.42%	52.56%

STOCK PRICE INDEX WEIGHTED BY FREE FLOAT MARKET CAPITALIZATION ASE20 (2014=1000)

	1313.4	1305.2	-0.63%	21.49%
--	--------	--------	--------	--------

Total Return Index ASETR (2021=1074)

	1351.3	1345.5	-0.43%	25.24%
--	--------	--------	--------	--------

STOCK PRICE INDEX WEIGHTED BY MARKET CAPITALIZATION (1991=1000)

	SUNDAY 17/04/2022	MONDAY 18/04/2022	% CHANGE	
			DAY BEFORE	YTD
GENERAL	4756.0	4714.8	-0.87%	17.71%
BANKS	6756.7	6727.8	-0.43%	2.46%
INSURANCE	1308.3	1312.3	0.31%	-1.21%
SERVICES	753.9	757.7	0.49%	-3.16%
INDUSTRY	7231.2	7108.5	-1.70%	51.23%

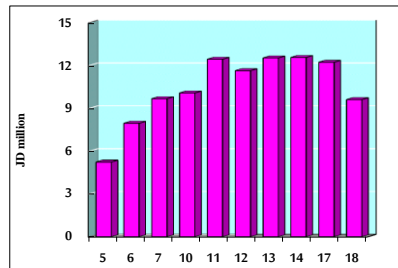
STOCK PRICE MARKET INDEX WEIGHTED BY FREE FLOAT MARKET CAP. (2012=1000)

	SUNDAY 17/04/2022	MONDAY 18/04/2022	% CHANGE	
			DAY BEFORE	YTD
FIRST MARKET	1372.5	1364.4	-0.59%	19.17%
SECOND MARKET	807.0	811.1	0.51%	-13.39%

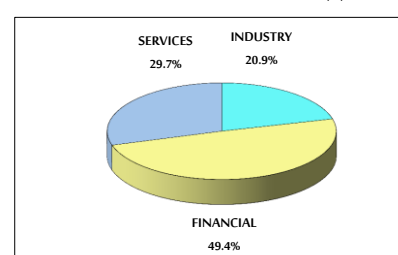
MARKET CAPITALIZATION (JD)

	18,154,003,503	18,006,107,640	-0.81%	16.20%
--	----------------	----------------	--------	--------

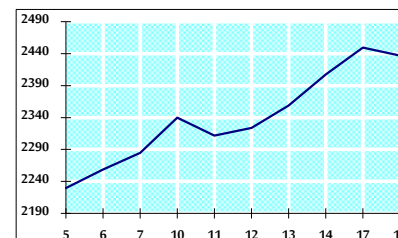
VALUE TRADED FROM 5/4 TO 18/4/2022



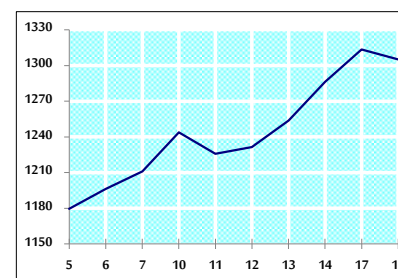
VALUE TRADED BY SECTOR MONDAY 18/4/2022



GENERAL FREE FLOAT PRICE INDEX FROM 5/4 TO 18/4/2022



ASE20 FREE FLOAT PRICE INDEX FROM 5/4 TO 18/4/2022



GENERAL PRICE INDEX FROM 5/4 TO 18/4/2022

