

## Daily Summary for Amman Stock Exchange

### VALUE TRADED (JD)

	2020	2021	NET CHANGE	CHANGE (%)
Daily	8,111,409	4,350,854	-3,760,555	-46.36%
Cumulative (1/12-6/12)	26,144,695	17,788,598	-8,356,097	-31.96%
Cumulative (3/1-6/12)	893,767,030	1,822,740,740	928,973,710	103.94%

### NO. OF SHARES TRADED

	2020	2021	NET CHANGE	CHANGE (%)
Daily	8,006,006	3,952,947	-4,053,059	-50.63%
Cumulative (1/12-6/12)	29,693,310	15,378,361	-14,314,949	-48.21%
Cumulative (3/1-6/12)	1,004,087,133	1,435,247,109	431,159,976	42.94%

### NO. OF TRANSACTIONS

	2020	2021	NET CHANGE	CHANGE (%)
Daily	2,312	3,036	724	31.31%
Cumulative (1/12-6/12)	9,684	11,873	2,189	22.60%
Cumulative (3/1-6/12)	378,747	765,519	386,772	102.12%

### SOME FINANCIAL RATIOS FOR THE ASE (6/12/2021)

SECTOR	P/E	P/BV	DIVIDEND YIELD (%)	TURNOVER (%)
FINANCIAL	33.690	0.836	3.401	0.050
SERVICES	-	1.268	2.253	0.060
INDUSTRY	27.587	2.067	2.709	0.144
OVERALL	36.350	1.085	3.062	0.063

### STOCK PRICE INDEX WEIGHTED BY FREE FLOAT MARKET CAPITALIZATION (1999=1000)

	SUNDAY 05/12/2021	MONDAY 06/12/2021	% CHANGE	
			DAY BEFORE	YTD
GENERAL	2068.5	2065.6	-0.14%	24.65%
FINANCIAL	2526.2	2521.8	-0.17%	16.12%
SERVICES	1324.1	1322.7	-0.11%	15.22%
INDUSTRY	3590.8	3591.1	0.01%	69.41%

### STOCK PRICE INDEX WEIGHTED BY FREE FLOAT MARKET CAPITALIZATION ASE20 (2014=1000)

	1042.2	1040.7	-0.15%	29.04%
--	--------	--------	--------	--------

### STOCK PRICE INDEX WEIGHTED BY MARKET CAPITALIZATION (1991=1000)

	SUNDAY 05/12/2021	MONDAY 06/12/2021	% CHANGE	
			DAY BEFORE	YTD
GENERAL	3908.6	3901.2	-0.19%	27.93%
BANKS	6323.7	6300.1	-0.37%	16.44%
INSURANCE	1361.2	1362.8	0.12%	4.10%
SERVICES	792.9	793.6	0.10%	12.70%
INDUSTRY	4598.7	4597.3	-0.03%	63.14%

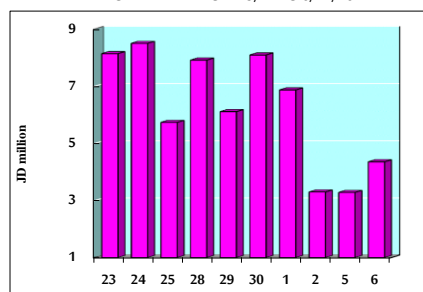
### STOCK PRICE MARKET INDEX WEIGHTED BY FREE FLOAT MARKET CAP. (2012=1000)

	SUNDAY 05/12/2021	MONDAY 06/12/2021	% CHANGE	
			DAY BEFORE	YTD
FIRST MARKET	1114.3	1112.8	-0.14%	28.15%
SECOND MARKET	937.7	936.8	-0.10%	7.51%

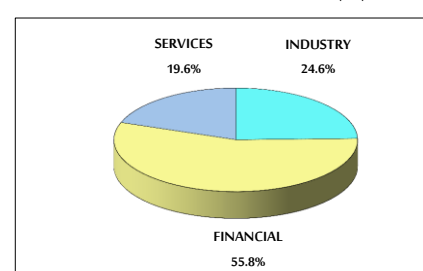
### MARKET CAPITALIZATION (JD)

	15,159,109,919	15,132,626,892	-0.17%	17.24%
--	----------------	----------------	--------	--------

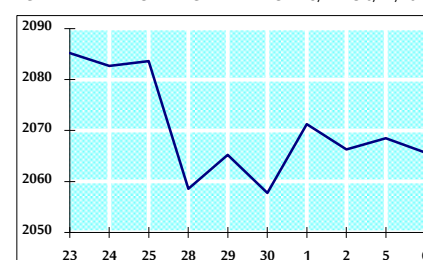
### VALUE TRADED FROM 23/11 TO 6/12/2021



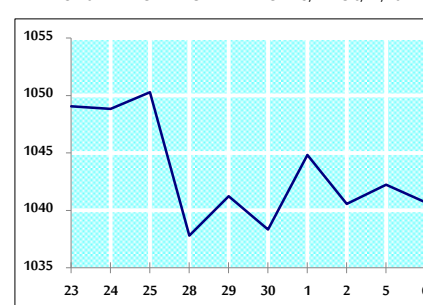
### VALUE TRADED BY SECTOR MONDAY 6/12/2021



### GENERAL FREE FLOAT PRICE INDEX FROM 23/11 TO 6/12/2021



### ASE20 FREE FLOAT PRICE INDEX FROM 23/11 TO 6/12/2021



### GENERAL PRICE INDEX FROM 23/11 TO 6/12/2021

