

Daily Summary for Amman Stock Exchange

VALUE TRADED (JD)

	2020	2021	NET CHANGE	CHANGE (%)
Daily	7,958,939	6,006,615	-1,952,324	-24.53%
Cumulative (1/12-28/12)	140,275,498	139,990,362	-285,136	-0.20%
Cumulative (3/1-28/12)	1,007,897,833	1,944,942,504	937,044,671	92.97%

NO. OF SHARES TRADED

	2020	2021	NET CHANGE	CHANGE (%)
Daily	7,810,506	4,213,809	-3,596,697	-46.05%
Cumulative (1/12-28/12)	134,535,821	102,283,602	-32,252,219	-23.97%
Cumulative (3/1-28/12)	1,108,929,644	1,522,152,350	413,222,706	37.26%

NO. OF TRANSACTIONS

	2020	2021	NET CHANGE	CHANGE (%)
Daily	2,894	3,254	360	12.44%
Cumulative (1/12-28/12)	43,527	58,385	14,858	34.14%
Cumulative (3/1-28/12)	412,590	812,031	399,441	96.81%

SOME FINANCIAL RATIOS FOR THE ASE (28/12/2021)

SECTOR	P/E	P/BV	DIVIDEND YIELD (%)	TURNOVER (%)
FINANCIAL	34.677	0.861	3.304	0.063
SERVICES	-	1.265	2.259	0.069
INDUSTRY	28.313	2.122	2.639	0.086
OVERALL	37.278	1.112	2.986	0.067

STOCK PRICE INDEX WEIGHTED BY FREE FLOAT MARKET CAPITALIZATION (1999=1000)

	MONDAY 27/12/2021	TUESDAY 28/12/2021	% CHANGE	
			DAY BEFORE	YTD
GENERAL	2094.4	2112.0	0.84%	27.44%
FINANCIAL	2571.9	2598.1	1.02%	19.64%
SERVICES	1318.3	1320.7	0.18%	15.04%
INDUSTRY	3622.7	3661.9	1.08%	72.75%

STOCK PRICE INDEX WEIGHTED BY FREE FLOAT MARKET CAPITALIZATION ASE20 (2014=1000)

	MONDAY 27/12/2021	TUESDAY 28/12/2021	% CHANGE	YTD
	1060.4	1070.6	0.96%	32.75%

STOCK PRICE INDEX WEIGHTED BY MARKET CAPITALIZATION (1991=1000)

	MONDAY 27/12/2021	TUESDAY 28/12/2021	% CHANGE	
			DAY BEFORE	YTD
GENERAL	3969.4	4000.8	0.79%	31.19%
BANKS	6469.0	6525.3	0.87%	20.60%
INSURANCE	1322.6	1329.8	0.54%	1.58%
SERVICES	788.4	788.7	0.04%	11.99%
INDUSTRY	4668.7	4713.9	0.97%	67.28%

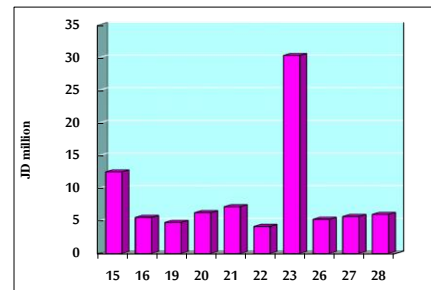
STOCK PRICE MARKET INDEX WEIGHTED BY FREE FLOAT MARKET CAP. (2012=1000)

	MONDAY 27/12/2021	TUESDAY 28/12/2021	% CHANGE	
			DAY BEFORE	YTD
FIRST MARKET	1130.5	1140.9	0.92%	31.39%
SECOND MARKET	933.5	937.0	0.37%	7.53%

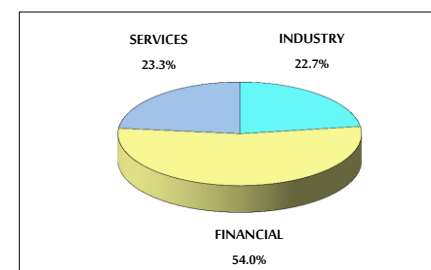
MARKET CAPITALIZATION (JD)

	MONDAY 27/12/2021	TUESDAY 28/12/2021	% CHANGE	YTD
	15,364,675,773	15,488,393,104	0.81%	19.99%

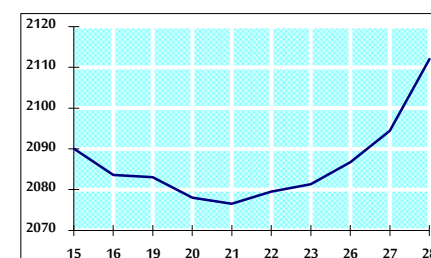
VALUE TRADED FROM 15/12 TO 28/12/2021



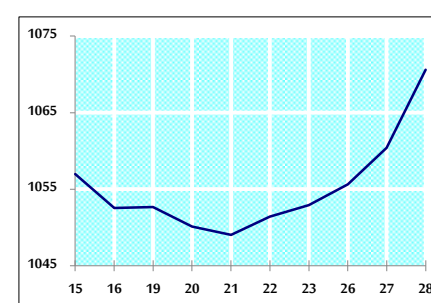
VALUE TRADED BY SECTOR TUESDAY 28/12/2021



GENERAL FREE FLOAT PRICE INDEX FROM 15/12 TO 28/12/2021



ASE20 FREE FLOAT PRICE INDEX FROM 15/12 TO 28/12/2021



GENERAL PRICE INDEX FROM 15/12 TO 28/12/2021

