

Daily Summary for Amman Stock Exchange

VALUE TRADED (JD)

	2020	2021	NET CHANGE	CHANGE (%)
Daily	5,725,257	5,675,904	-49,353	-0.86%
Cumulative (1/12-27/12)	132,316,559	133,983,747	1,667,188	1.26%
Cumulative (3/1-27/12)	999,938,894	1,938,935,889	938,996,995	93.91%

NO. OF SHARES TRADED

	2020	2021	NET CHANGE	CHANGE (%)
Daily	5,732,441	4,438,864	-1,293,577	-22.57%
Cumulative (1/12-27/12)	126,725,315	98,069,793	-28,655,522	-22.61%
Cumulative (3/1-27/12)	1,101,119,138	1,517,938,541	416,819,403	37.85%

NO. OF TRANSACTIONS

	2020	2021	NET CHANGE	CHANGE (%)
Daily	2,194	2,371	177	8.07%
Cumulative (1/12-27/12)	40,633	55,131	14,498	35.68%
Cumulative (3/1-27/12)	409,696	808,777	399,081	97.41%

SOME FINANCIAL RATIOS FOR THE ASE (27/12/2021)

SECTOR	P/E	P/BV	DIVIDEND YIELD (%)	TURNOVER (%)
FINANCIAL	34.383	0.853	3.332	0.078
SERVICES	-	1.263	2.262	0.052
INDUSTRY	28.018	2.100	2.667	0.059
OVERALL	36.985	1.104	3.010	0.071

STOCK PRICE INDEX WEIGHTED BY FREE FLOAT MARKET CAPITALIZATION (1999=1000)

	SUNDAY 26/12/2021	MONDAY 27/12/2021	% CHANGE	
			DAY BEFORE	YTD
GENERAL	2086.8	2094.4	0.37%	26.38%
FINANCIAL	2555.6	2571.9	0.64%	18.43%
SERVICES	1321.8	1318.3	-0.27%	14.83%
INDUSTRY	3620.7	3622.7	0.05%	70.90%

STOCK PRICE INDEX WEIGHTED BY FREE FLOAT MARKET CAPITALIZATION ASE20 (2014=1000)

	1055.6	1060.4	0.45%	31.48%
--	--------	--------	-------	--------

STOCK PRICE INDEX WEIGHTED BY MARKET CAPITALIZATION (1991=1000)

	SUNDAY 26/12/2021	MONDAY 27/12/2021	% CHANGE	
			DAY BEFORE	YTD
GENERAL	3937.7	3969.4	0.80%	30.16%
BANKS	6387.9	6469.0	1.27%	19.56%
INSURANCE	1324.8	1322.6	-0.16%	1.03%
SERVICES	783.7	788.4	0.59%	11.94%
INDUSTRY	4658.6	4668.7	0.22%	65.67%

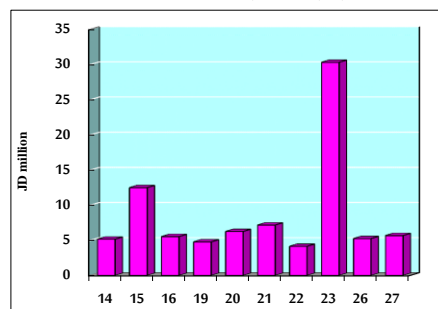
STOCK PRICE MARKET INDEX WEIGHTED BY FREE FLOAT MARKET CAP. (2012=1000)

	SUNDAY 26/12/2021	MONDAY 27/12/2021	% CHANGE	
			DAY BEFORE	YTD
FIRST MARKET	1125.8	1130.5	0.42%	30.19%
SECOND MARKET	935.0	933.5	-0.16%	7.13%

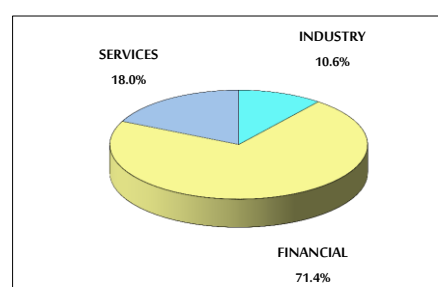
MARKET CAPITALIZATION (JD)

	15,252,801,301	15,364,675,773	0.73%	19.03%
--	----------------	----------------	-------	--------

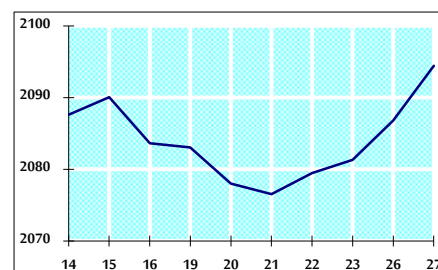
VALUE TRADED FROM 14/12 TO 27/12/2021



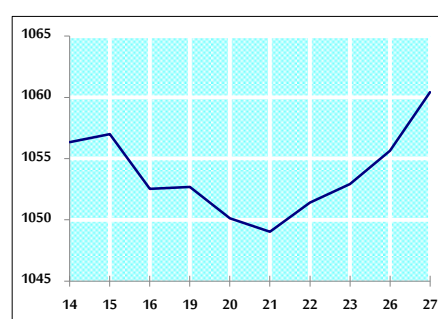
VALUE TRADED BY SECTOR MONDAY 27/12/2021



GENERAL FREE FLOAT PRICE INDEX FROM 14/12 TO 27/12/2021



ASE20 FREE FLOAT PRICE INDEX FROM 14/12 TO 27/12/2021



GENERAL PRICE INDEX FROM 14/12 TO 27/12/2021

