

Daily Summary for Amman Stock Exchange

VALUE TRADED (JD)

	2020	2021	NET CHANGE	CHANGE (%)
Daily	3,503,886	5,381,364	1,877,478	53.58%
Cumulative (3/10-28/10)	74,799,540	116,670,762	41,871,222	55.98%
Cumulative (3/1-28/10)	785,860,448	1,665,123,216	879,262,768	111.89%

NO. OF SHARES TRADED

	2020	2021	NET CHANGE	CHANGE (%)
Daily	4,416,787	5,313,411	896,624	20.30%
Cumulative (3/10-28/10)	92,739,736	90,085,901	-2,653,835	-2.86%
Cumulative (3/1-28/10)	870,166,322	1,301,283,811	431,117,489	49.54%

NO. OF TRANSACTIONS

	2020	2021	NET CHANGE	CHANGE (%)
Daily	1,626	3,450	1,824	112.18%
Cumulative (3/10-28/10)	32,869	61,984	29,115	88.58%
Cumulative (3/1-28/10)	332,472	673,593	341,121	102.60%

SOME FINANCIAL RATIOS FOR THE ASE (28/10/2021)

SECTOR	P/E	P/BV	DIVIDEND YIELD (%)	TURNOVER (%)
FINANCIAL	34.993	0.868	3.274	0.067
SERVICES	-	1.282	2.229	0.153
INDUSTRY	28.481	2.134	2.624	0.066
OVERALL	37.672	1.124	2.955	0.085

STOCK PRICE INDEX WEIGHTED BY FREE FLOAT MARKET CAPITALIZATION (1999=1000)

	WEDNESDAY 27/10/2021	THURSDAY 28/10/2021	% CHANGE	
			DAY BEFORE	YTD
GENERAL	2124.9	2121.0	-0.19%	27.98%
FINANCIAL	2587.1	2572.8	-0.55%	18.47%
SERVICES	1350.9	1356.7	0.43%	18.18%
INDUSTRY	3691.8	3701.4	0.26%	74.62%

STOCK PRICE INDEX WEIGHTED BY FREE FLOAT MARKET CAPITALIZATION ASE20 (2014=1000)

	1076.2	1073.2	-0.28%	33.07%
--	--------	--------	--------	--------

STOCK PRICE INDEX WEIGHTED BY MARKET CAPITALIZATION (1991=1000)

	WEDNESDAY 27/10/2021	THURSDAY 28/10/2021	% CHANGE	
			DAY BEFORE	YTD
GENERAL	4045.0	4043.1	-0.05%	32.58%
BANKS	6585.2	6579.2	-0.09%	21.60%
INSURANCE	1381.6	1384.8	0.23%	5.78%
SERVICES	808.4	804.0	-0.54%	14.16%
INDUSTRY	4739.5	4749.7	0.22%	68.55%

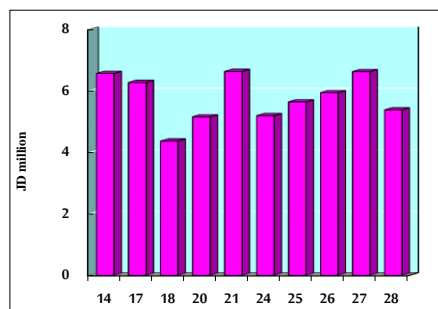
STOCK PRICE MARKET INDEX WEIGHTED BY FREE FLOAT MARKET CAP. (2012=1000)

	WEDNESDAY 27/10/2021	THURSDAY 28/10/2021	% CHANGE	
			DAY BEFORE	YTD
FIRST MARKET	1146.5	1144.5	-0.18%	31.80%
SECOND MARKET	945.9	940.3	-0.59%	7.91%

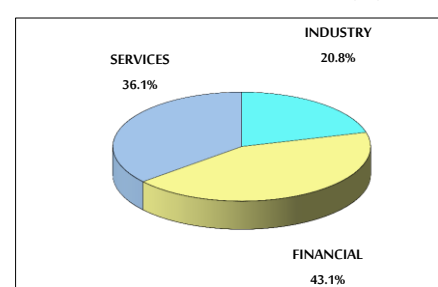
MARKET CAPITALIZATION (JD)

	15,625,725,656	15,617,898,688	-0.05%	21.00%
--	----------------	----------------	--------	--------

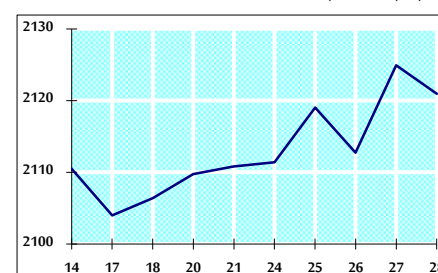
VALUE TRADED FROM 14/10 TO 28/10/2021



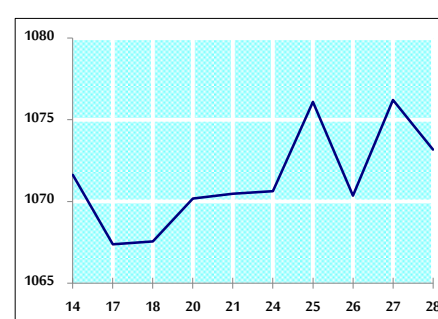
VALUE TRADED BY SECTOR THURSDAY 28/10/2021



GENERAL FREE FLOAT PRICE INDEX FROM 14/10 TO 28/10/2021



ASE20 FREE FLOAT PRICE INDEX FROM 14/10 TO 28/10/2021



GENERAL PRICE INDEX FROM 14/10 TO 28/10/2021

