

Daily Summary for Amman Stock Exchange

VALUE TRADED (JD)

	2019	2020	NET CHANGE	CHANGE (%)
Daily	6,706,933	21,620,618	14,913,685	222.36%
Cumulative(1/12-13/12)	53,178,325	68,643,509	15,465,184	29.08%
Cumulative(2/1-13/12)	1,480,149,383	936,265,844	-543,883,539	-36.75%

NO. OF SHARES TRADED

	2019	2020	NET CHANGE	CHANGE (%)
Daily	6,091,962	13,191,123	7,099,161	116.53%
Cumulative(1/12-13/12)	54,200,780	66,822,851	12,622,071	23.29%
Cumulative(2/1-13/12)	1,165,106,011	1,041,216,674	-123,889,337	-10.63%

NO. OF TRANSACTIONS

	2019	2020	NET CHANGE	CHANGE (%)
Daily	2,097	2,838	741	35.34%
Cumulative(1/12-13/12)	16,023	20,819	4,796	29.93%
Cumulative(2/1-13/12)	481,830	389,882	-91,948	-19.08%

SOME FINANCIAL RATIOS FOR THE ASE (13/12/2020)

SECTOR	P/E	P/BV	DIVIDEND YIELD (%)	TURNOVER (%)
FINANCIAL	9.005	0.731	0.172	0.245
SERVICES	11.456	0.996	5.340	0.095
INDUSTRY	16.172	1.209	3.955	0.185
OVERALL	9.664	0.823	1.880	0.207

STOCK PRICE INDEX WEIGHTED BY FREE FLOAT MARKET CAPITALIZATION (1999=1000)

	THURSDAY 10/12/2020	SUNDAY 13/12/2020	% CHANGE	
			DAY BEFORE	YTD
GENERAL	1592.7	1598.8	0.39%	-11.92%
FINANCIAL	2107.5	2118.5	0.52%	-13.53%
SERVICES	1098.5	1095.9	-0.24%	-15.25%
INDUSTRY	2018.4	2033.2	0.73%	9.49%

STOCK PRICE INDEX WEIGHTED BY FREE FLOAT MARKET CAPITALIZATION ASE20 (2014=1000)

	769.8	773.7	0.51%	-13.16%
--	-------	-------	-------	---------

STOCK PRICE INDEX WEIGHTED BY MARKET CAPITALIZATION (1991=1000)

	THURSDAY 10/12/2020	SUNDAY 13/12/2020	% CHANGE	
			DAY BEFORE	YTD
GENERAL	2944.3	2951.4	0.24%	-16.01%
BANKS	5282.6	5291.4	0.17%	-25.43%
INSURANCE	1306.9	1308.4	0.11%	2.02%
SERVICES	687.6	688.7	0.17%	-6.39%
INDUSTRY	2633.4	2645.7	0.47%	1.24%

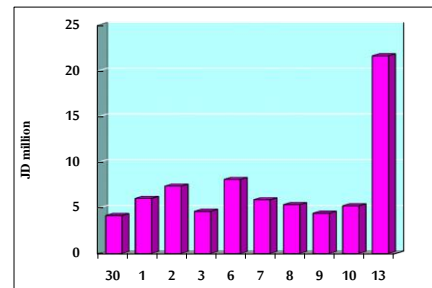
STOCK PRICE MARKET INDEX WEIGHTED BY FREE FLOAT MARKET CAP. (2012=1000)

	THURSDAY 10/12/2020	SUNDAY 13/12/2020	% CHANGE	
			DAY BEFORE	YTD
FIRST MARKET	829.5	833.7	0.51%	-12.78%
SECOND MARKET	870.2	868.9	-0.16%	3.93%

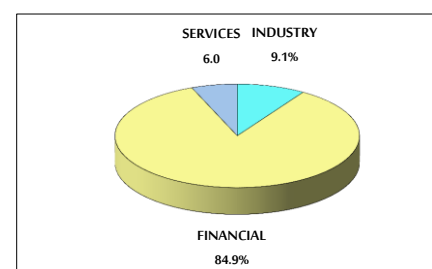
MARKET CAPITALIZATION (JD)

	12,535,292,213	12,561,600,182	0.21%	-15.78%
--	----------------	----------------	-------	---------

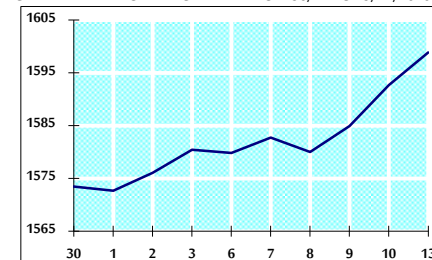
VALUE TRADED FROM 30/11 TO 13/12/2020



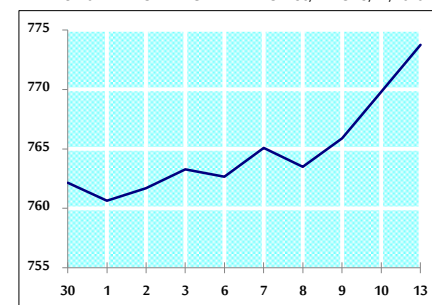
VALUE TRADED BY SECTOR SUNDAY 13/12/2020



GENERAL FREE FLOAT PRICE INDEX FROM 30/11 TO 13/12/2020



ASE20 FREE FLOAT PRICE INDEX FROM 30/11 TO 13/12/2020



GENERAL PRICE INDEX FROM 30/11 TO 13/12/2020

