

## Daily Summary for Amman Stock Exchange

### VALUE TRADED (JD)

	2019	2020	NET CHANGE	CHANGE (%)
Daily	4,723,879	5,225,613	501,734	10.62%
Cumulative(1/12-10/12)	46,471,392	47,022,891	551,499	1.19%
Cumulative(2/1-10/12)	1,473,442,450	914,645,226	-558,797,224	-37.92%

### NO. OF SHARES TRADED

	2019	2020	NET CHANGE	CHANGE (%)
Daily	5,912,469	6,480,539	568,070	9.61%
Cumulative(1/12-10/12)	48,108,818	53,631,728	5,522,910	11.48%
Cumulative(2/1-10/12)	1,159,014,049	1,028,025,551	-130,988,498	-11.30%

### NO. OF TRANSACTIONS

	2019	2020	NET CHANGE	CHANGE (%)
Daily	2,145	2,447	302	14.08%
Cumulative(1/12-10/12)	13,926	17,981	4,055	29.12%
Cumulative(2/1-10/12)	479,733	387,044	-92,689	-19.32%

### SOME FINANCIAL RATIOS FOR THE ASE (10/12/2020)

SECTOR	P/E	P/BV	DIVIDEND YIELD (%)	TURNOVER (%)
FINANCIAL	8.993	0.730	0.172	0.056
SERVICES	11.447	0.995	5.344	0.120
INDUSTRY	16.078	1.202	3.978	0.318
OVERALL	9.641	0.821	1.884	0.102

### STOCK PRICE INDEX WEIGHTED BY FREE FLOAT MARKET CAPITALIZATION (1999=1000)

	WEDNESDAY 09/12/2020	THURSDAY 10/12/2020	% CHANGE	
			DAY BEFORE	YTD
GENERAL	1584.9	1592.7	0.49%	-12.26%
FINANCIAL	2097.8	2107.5	0.46%	-13.98%
SERVICES	1096.8	1098.5	0.15%	-15.05%
INDUSTRY	1997.4	2018.4	1.05%	8.69%

### STOCK PRICE INDEX WEIGHTED BY FREE FLOAT MARKET CAPITALIZATION ASE20 (2014=1000)

	765.9	769.8	0.51%	-13.60%
--	-------	-------	-------	---------

### STOCK PRICE INDEX WEIGHTED BY MARKET CAPITALIZATION (1991=1000)

	WEDNESDAY 09/12/2020	THURSDAY 10/12/2020	% CHANGE	
			DAY BEFORE	YTD
GENERAL	2925.0	2944.3	0.66%	-16.21%
BANKS	5247.5	5282.6	0.67%	-25.55%
INSURANCE	1307.7	1306.9	-0.06%	1.90%
SERVICES	686.0	687.6	0.23%	-6.54%
INDUSTRY	2608.2	2633.4	0.96%	0.77%

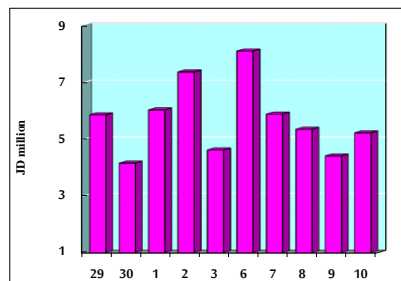
### STOCK PRICE MARKET INDEX WEIGHTED BY FREE FLOAT MARKET CAP. (2012=1000)

	WEDNESDAY 09/12/2020	THURSDAY 10/12/2020	% CHANGE	
			DAY BEFORE	YTD
FIRST MARKET	825.4	829.5	0.49%	-13.22%
SECOND MARKET	864.9	870.2	0.62%	4.09%

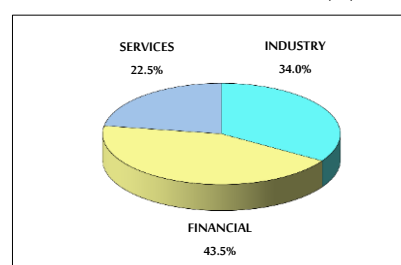
### MARKET CAPITALIZATION (JD)

	12,465,535,631	12,535,292,213	0.56%	-15.95%
--	----------------	----------------	-------	---------

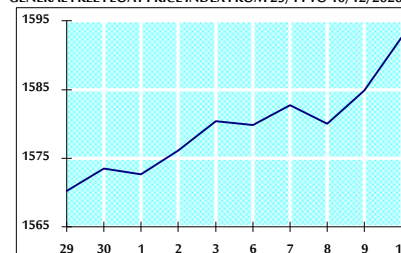
### VALUE TRADED FROM 29/11 TO 10/12/2020



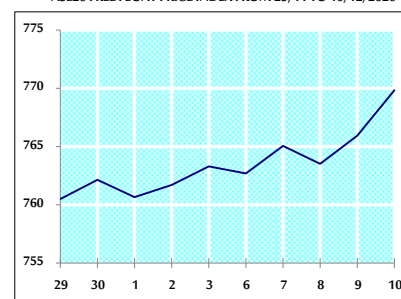
### VALUE TRADED BY SECTOR THURSDAY 10/12/2020



### GENERAL FREE FLOAT PRICE INDEX FROM 29/11 TO 10/12/2020



### ASE20 FREE FLOAT PRICE INDEX FROM 29/11 TO 10/12/2020



### GENERAL PRICE INDEX FROM 29/11 TO 10/12/2020

