

Daily Summary for Amman Stock Exchange

VALUE TRADED (JD)

	2019	2020	NET CHANGE	CHANGE (%)
Daily	4,098,496	4,414,034	315,538	7.70%
Cumulative(1/12-9/12)	41,747,513	41,797,278	49,765	0.12%
Cumulative(2/1-9/12)	1,468,718,571	909,419,613	-559,298,958	-38.08%

NO. OF SHARES TRADED

	2019	2020	NET CHANGE	CHANGE (%)
Daily	3,332,164	5,179,599	1,847,435	55.44%
Cumulative(1/12-9/12)	42,196,349	47,151,189	4,954,840	11.74%
Cumulative(2/1-9/12)	1,153,101,580	1,021,545,012	-131,556,568	-11.41%

NO. OF TRANSACTIONS

	2019	2020	NET CHANGE	CHANGE (%)
Daily	1,943	2,166	223	11.48%
Cumulative(1/12-9/12)	11,781	15,534	3,753	31.86%
Cumulative(2/1-9/12)	477,588	384,597	-92,991	-19.47%

SOME FINANCIAL RATIOS FOR THE ASE (9/12/2020)

SECTOR	P/E	P/BV	DIVIDEND YIELD (%)	TURNOVER (%)
FINANCIAL	8.938	0.726	0.173	0.072
SERVICES	11.432	0.994	5.351	0.094
INDUSTRY	15.935	1.192	4.014	0.112
OVERALL	9.578	0.816	1.897	0.081

STOCK PRICE INDEX WEIGHTED BY FREE FLOAT MARKET CAPITALIZATION (1999=1000)

	TUESDAY 08/12/2020	WEDNESDAY 09/12/2020	% CHANGE	
			DAY BEFORE	YTD
GENERAL	1580.0	1584.9	0.31%	-12.69%
FINANCIAL	2090.7	2097.8	0.34%	-14.37%
SERVICES	1097.1	1096.8	-0.03%	-15.18%
INDUSTRY	1988.1	1997.4	0.47%	7.56%

STOCK PRICE INDEX WEIGHTED BY FREE FLOAT MARKET CAPITALIZATION ASE20 (2014=1000)

	763.5	765.9	0.32%	-14.04%
--	-------	-------	-------	---------

STOCK PRICE INDEX WEIGHTED BY MARKET CAPITALIZATION (1991=1000)

	TUESDAY 08/12/2020	WEDNESDAY 09/12/2020	% CHANGE	
			DAY BEFORE	YTD
GENERAL	2911.6	2925.0	0.46%	-16.76%
BANKS	5230.2	5247.5	0.33%	-26.05%
INSURANCE	1306.8	1307.7	0.07%	1.97%
SERVICES	683.0	686.0	0.45%	-6.76%
INDUSTRY	2588.5	2608.2	0.76%	-0.19%

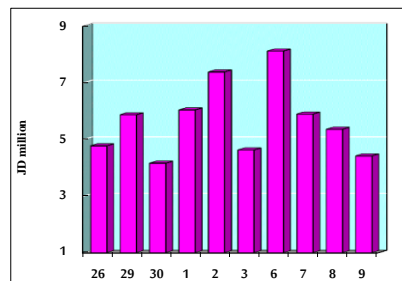
STOCK PRICE MARKET INDEX WEIGHTED BY FREE FLOAT MARKET CAP. (2012=1000)

	TUESDAY 08/12/2020	WEDNESDAY 09/12/2020	% CHANGE	
			DAY BEFORE	YTD
FIRST MARKET	823.1	825.4	0.28%	-13.64%
SECOND MARKET	860.9	864.9	0.46%	3.45%

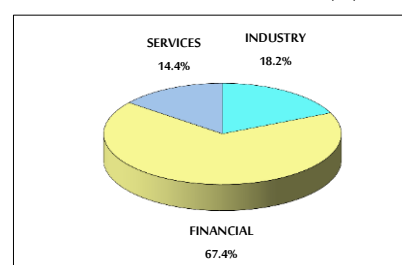
MARKET CAPITALIZATION (JD)

	12,417,772,452	12,465,535,631	0.38%	-16.42%
--	----------------	----------------	-------	---------

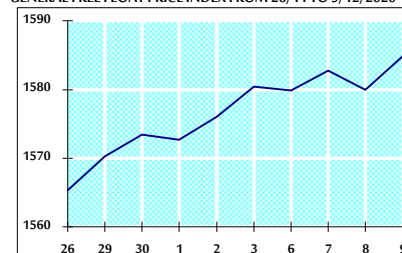
VALUE TRADED FROM 26/11 TO 9/12/2020



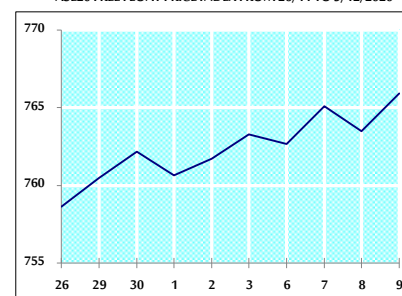
VALUE TRADED BY SECTOR WEDNESDAY 9/12/2020



GENERAL FREE FLOAT PRICE INDEX FROM 26/11 TO 9/12/2020



ASE20 FREE FLOAT PRICE INDEX FROM 26/11 TO 9/12/2020



GENERAL PRICE INDEX FROM 26/11 TO 9/12/2020

