

Daily Summary for Amman Stock Exchange

VALUE TRADED (JD)

	2019	2020	NET CHANGE	CHANGE (%)
Daily	11,866,784	5,350,395	-6,516,389	-54.91%
Cumulative(1/12-8/12)	37,649,017	37,383,244	-265,773	-0.71%
Cumulative(2/1-8/12)	1,464,620,075	905,005,579	-559,614,496	-38.21%

NO. OF SHARES TRADED

	2019	2020	NET CHANGE	CHANGE (%)
Daily	16,634,827	6,391,747	-10,243,080	-61.58%
Cumulative(1/12-8/12)	38,864,185	41,971,590	3,107,405	8.00%
Cumulative(2/1-8/12)	1,149,769,416	1,016,365,413	-133,404,003	-11.60%

NO. OF TRANSACTIONS

	2019	2020	NET CHANGE	CHANGE (%)
Daily	1,860	1,948	88	4.73%
Cumulative(1/12-8/12)	9,838	13,368	3,530	35.88%
Cumulative(2/1-8/12)	475,645	382,431	-93,214	-19.60%

SOME FINANCIAL RATIOS FOR THE ASE (8/12/2020)

SECTOR	P/E	P/BV	DIVIDEND YIELD (%)	TURNOVER (%)
FINANCIAL	8.904	0.723	0.174	0.073
SERVICES	11.437	0.994	5.349	0.071
INDUSTRY	15.805	1.182	4.047	0.295
OVERALL	9.534	0.812	1.906	0.100

STOCK PRICE INDEX WEIGHTED BY FREE FLOAT MARKET CAPITALIZATION (1999=1000)

	MONDAY 07/12/2020	TUESDAY 08/12/2020	% CHANGE	
			DAY BEFORE	YTD
GENERAL	1582.7	1580.0	-0.17%	-12.96%
FINANCIAL	2096.0	2090.7	-0.25%	-14.66%
SERVICES	1096.1	1097.1	0.09%	-15.15%
INDUSTRY	1988.4	1988.1	-0.02%	7.06%

STOCK PRICE INDEX WEIGHTED BY FREE FLOAT MARKET CAPITALIZATION ASE20 (2014=1000)

	765.1	763.5	-0.21%	-14.31%
--	-------	-------	--------	---------

STOCK PRICE INDEX WEIGHTED BY MARKET CAPITALIZATION (1991=1000)

	MONDAY 07/12/2020	TUESDAY 08/12/2020	% CHANGE	
			DAY BEFORE	YTD
GENERAL	2920.6	2911.6	-0.31%	-17.14%
BANKS	5265.3	5230.2	-0.67%	-26.29%
INSURANCE	1309.6	1306.8	-0.21%	1.89%
SERVICES	682.9	683.0	0.01%	-7.17%
INDUSTRY	2579.8	2588.5	0.34%	-0.94%

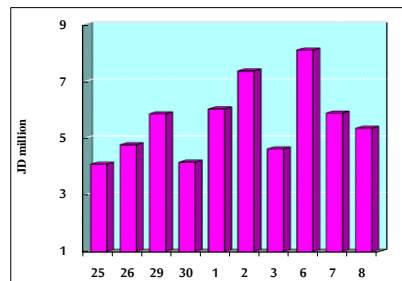
STOCK PRICE MARKET INDEX WEIGHTED BY FREE FLOAT MARKET CAP. (2012=1000)

	MONDAY 07/12/2020	TUESDAY 08/12/2020	% CHANGE	
			DAY BEFORE	YTD
FIRST MARKET	825.2	823.1	-0.25%	-13.89%
SECOND MARKET	857.6	860.9	0.38%	2.97%

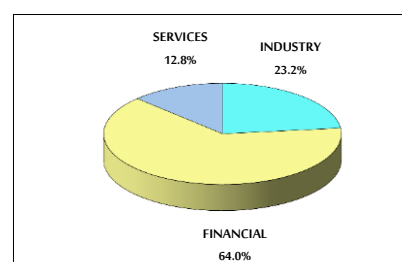
MARKET CAPITALIZATION (JD)

	12,449,209,045	12,417,772,452	-0.25%	-16.74%
--	----------------	----------------	--------	---------

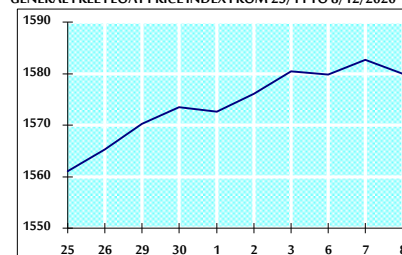
VALUE TRADED FROM 25/11 TO 8/12/2020



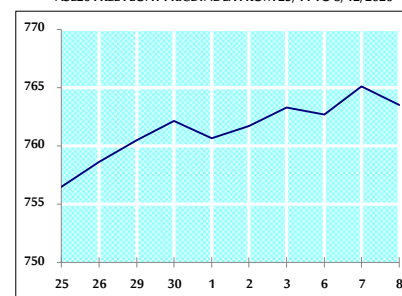
VALUE TRADED BY SECTOR TUESDAY 8/12/2020



GENERAL FREE FLOAT PRICE INDEX FROM 25/11 TO 8/12/2020



ASE20 FREE FLOAT PRICE INDEX FROM 25/11 TO 8/12/2020



GENERAL PRICE INDEX FROM 25/11 TO 8/12/2020

