

Daily Summary for Amman Stock Exchange

VALUE TRADED (JD)

	2019	2020	NET CHANGE	CHANGE (%)
Daily	5,204,634	5,888,154	683,520	13.13%
Cumulative(1/12-7/12)	25,782,233	32,032,849	6,250,616	24.24%
Cumulative(2/1-7/12)	1,452,753,291	899,655,184	-553,098,107	-38.07%

NO. OF SHARES TRADED

	2019	2020	NET CHANGE	CHANGE (%)
Daily	3,983,369	5,886,533	1,903,164	47.78%
Cumulative(1/12-7/12)	22,229,358	35,579,843	13,350,485	60.06%
Cumulative(2/1-7/12)	1,133,134,589	1,009,973,666	-123,160,923	-10.87%

NO. OF TRANSACTIONS

	2019	2020	NET CHANGE	CHANGE (%)
Daily	1,859	1,736	-123	-6.62%
Cumulative(1/12-7/12)	7,978	11,420	3,442	43.14%
Cumulative(2/1-7/12)	473,785	380,483	-93,302	-19.69%

SOME FINANCIAL RATIOS FOR THE ASE (7/12/2020)

SECTOR	P/E	P/BV	DIVIDEND YIELD (%)	TURNOVER (%)
FINANCIAL	8.953	0.727	0.173	0.097
SERVICES	11.436	0.994	5.349	0.030
INDUSTRY	15.761	1.179	4.058	0.170
OVERALL	9.563	0.814	1.900	0.092

STOCK PRICE INDEX WEIGHTED BY FREE FLOAT MARKET CAPITALIZATION (1999=1000)

	SUNDAY 06/12/2020	MONDAY 07/12/2020	% CHANGE	
			DAY BEFORE	YTD
GENERAL	1579.8	1582.7	0.18%	-12.81%
FINANCIAL	2097.4	2096.0	-0.07%	-14.45%
SERVICES	1090.5	1096.1	0.51%	-15.23%
INDUSTRY	1972.9	1988.4	0.78%	7.08%

STOCK PRICE INDEX WEIGHTED BY FREE FLOAT MARKET CAPITALIZATION ASE20 (2014=1000)

	762.7	765.1	0.32%	-14.13%
--	-------	-------	-------	---------

STOCK PRICE INDEX WEIGHTED BY MARKET CAPITALIZATION (1991=1000)

	SUNDAY 06/12/2020	MONDAY 07/12/2020	% CHANGE	
			DAY BEFORE	YTD
GENERAL	2908.0	2920.6	0.44%	-16.88%
BANKS	5256.4	5265.3	0.17%	-25.79%
INSURANCE	1311.6	1309.6	-0.16%	2.11%
SERVICES	683.8	682.9	-0.13%	-7.18%
INDUSTRY	2541.4	2579.8	1.51%	-1.28%

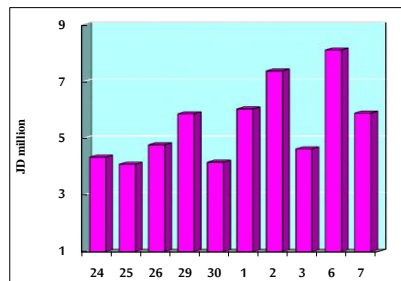
STOCK PRICE MARKET INDEX WEIGHTED BY FREE FLOAT MARKET CAP. (2012=1000)

	SUNDAY 06/12/2020	MONDAY 07/12/2020	% CHANGE	
			DAY BEFORE	YTD
FIRST MARKET	822.9	825.2	0.28%	-13.67%
SECOND MARKET	860.8	857.6	-0.38%	2.58%

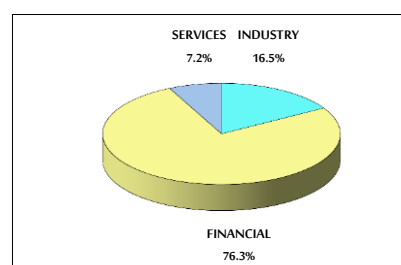
MARKET CAPITALIZATION (JD)

	12,402,588,993	12,449,209,045	0.38%	-16.53%
--	----------------	----------------	-------	---------

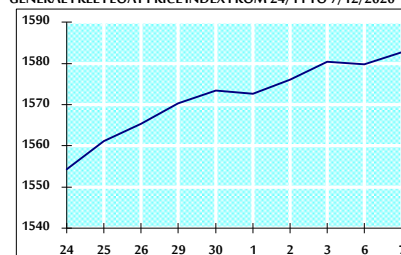
VALUE TRADED FROM 24/11 TO 7/12/2020



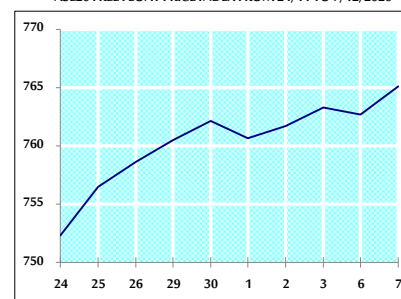
VALUE TRADED BY SECTOR MONDAY 7/12/2020



GENERAL FREE FLOAT PRICE INDEX FROM 24/11 TO 7/12/2020



ASE20 FREE FLOAT PRICE INDEX FROM 24/11 TO 7/12/2020



GENERAL PRICE INDEX FROM 24/11 TO 7/12/2020

