

Daily Summary for Amman Stock Exchange

VALUE TRADED (JD)

	2019	2020	NET CHANGE	CHANGE (%)
Daily	3,146,382	8,111,409	4,965,027	157.80%
Cumulative(1/12-6/12)	20,577,599	26,144,695	5,567,096	27.05%
Cumulative(2/1-6/12)	1,447,548,657	893,767,030	-553,781,627	-38.26%

NO. OF SHARES TRADED

	2019	2020	NET CHANGE	CHANGE (%)
Daily	2,841,846	8,006,006	5,164,160	181.72%
Cumulative(1/12-6/12)	18,245,989	29,693,310	11,447,321	62.74%
Cumulative(2/1-6/12)	1,129,151,220	1,004,087,133	-125,064,087	-11.08%

NO. OF TRANSACTIONS

	2019	2020	NET CHANGE	CHANGE (%)
Daily	1,526	2,312	786	51.51%
Cumulative(1/12-6/12)	6,119	9,684	3,565	58.26%
Cumulative(2/1-6/12)	471,926	378,747	-93,179	-19.74%

SOME FINANCIAL RATIOS FOR THE ASE (6/12/2020)

SECTOR	P/E	P/BV	DIVIDEND YIELD (%)	TURNOVER (%)
FINANCIAL	8.946	0.726	0.173	0.087
SERVICES	11.404	0.991	5.364	0.100
INDUSTRY	15.545	1.163	4.115	0.375
OVERALL	9.523	0.811	1.908	0.126

STOCK PRICE INDEX WEIGHTED BY FREE FLOAT MARKET CAPITALIZATION (1999=1000)

	THURSDAY 03/12/2020	SUNDAY 06/12/2020	% CHANGE	
			DAY BEFORE	YTD
GENERAL	1580.4	1579.8	-0.04%	-12.97%
FINANCIAL	2095.9	2097.4	0.07%	-14.39%
SERVICES	1092.9	1090.5	-0.22%	-15.66%
INDUSTRY	1978.5	1972.9	-0.28%	6.24%

STOCK PRICE INDEX WEIGHTED BY FREE FLOAT MARKET CAPITALIZATION ASE20 (2014=1000)

	763.3	762.7	-0.08%	-14.40%
--	-------	-------	--------	---------

STOCK PRICE INDEX WEIGHTED BY MARKET CAPITALIZATION (1991=1000)

	THURSDAY 03/12/2020	SUNDAY 06/12/2020	% CHANGE	
			DAY BEFORE	YTD
GENERAL	2906.1	2908.0	0.06%	-17.24%
BANKS	5248.6	5256.4	0.15%	-25.92%
INSURANCE	1308.2	1311.6	0.26%	2.27%
SERVICES	681.7	683.8	0.31%	-7.06%
INDUSTRY	2549.8	2541.4	-0.33%	-2.75%

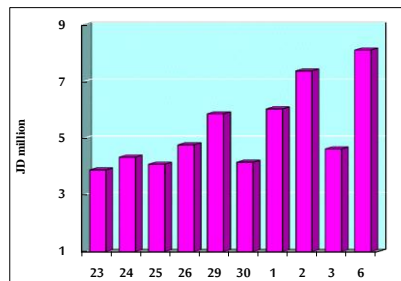
STOCK PRICE MARKET INDEX WEIGHTED BY FREE FLOAT MARKET CAP. (2012=1000)

	THURSDAY 03/12/2020	SUNDAY 06/12/2020	% CHANGE	
			DAY BEFORE	YTD
FIRST MARKET	823.2	822.9	-0.04%	-13.91%
SECOND MARKET	861.1	860.8	-0.03%	2.96%

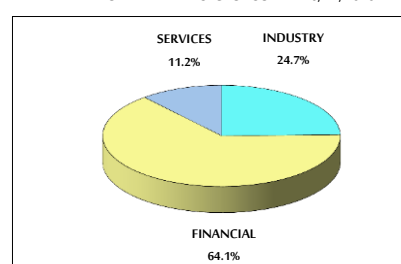
MARKET CAPITALIZATION (JD)

	12,395,942,116	12,402,588,993	0.05%	-16.84%
--	----------------	----------------	-------	---------

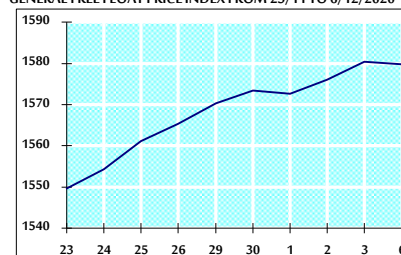
VALUE TRADED FROM 23/11 TO 6/12/2020



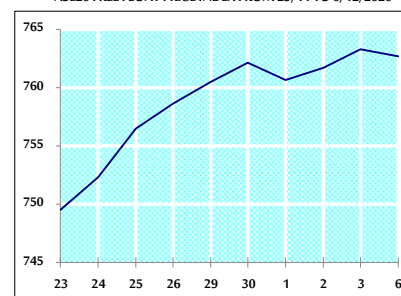
VALUE TRADED BY SECTOR SUNDAY 6/12/2020



GENERAL FREE FLOAT PRICE INDEX FROM 23/11 TO 6/12/2020



ASE20 FREE FLOAT PRICE INDEX FROM 23/11 TO 6/12/2020



GENERAL PRICE INDEX FROM 23/11 TO 6/12/2020

