

Daily Summary for Amman Stock Exchange

VALUE TRADED (JD)

	2019	2020	NET CHANGE	CHANGE (%)
Daily	7,424,718	4,623,201	-2,801,517	-37.73%
Cumulative(1/12-3/12)	17,431,217	18,033,286	602,069	3.45%
Cumulative(2/1-3/12)	1,444,402,275	885,655,621	-558,746,654	-38.68%

NO. OF SHARES TRADED

	2019	2020	NET CHANGE	CHANGE (%)
Daily	5,452,071	6,186,345	734,274	13.47%
Cumulative(1/12-3/12)	15,404,143	21,687,304	6,283,161	40.79%
Cumulative(2/1-3/12)	1,126,309,374	996,081,127	-130,228,247	-11.56%

NO. OF TRANSACTIONS

	2019	2020	NET CHANGE	CHANGE (%)
Daily	1,440	2,389	949	65.90%
Cumulative(1/12-3/12)	4,593	7,372	2,779	60.51%
Cumulative(2/1-3/12)	470,400	376,435	-93,965	-19.98%

SOME FINANCIAL RATIOS FOR THE ASE (3/12/2020)

SECTOR	P/E	P/BV	DIVIDEND YIELD (%)	TURNOVER (%)
FINANCIAL	8.932	0.725	0.174	0.067
SERVICES	11.402	0.991	5.365	0.099
INDUSTRY	15.573	1.165	4.107	0.254
OVERALL	9.517	0.811	1.909	0.097

STOCK PRICE INDEX WEIGHTED BY FREE FLOAT MARKET CAPITALIZATION (1999=1000)

	WEDNESDAY 02/12/2020	THURSDAY 03/12/2020	% CHANGE	
			DAY BEFORE	YTD
GENERAL	1576.1	1580.4	0.28%	-12.93%
FINANCIAL	2090.4	2095.9	0.26%	-14.45%
SERVICES	1090.3	1092.9	0.24%	-15.47%
INDUSTRY	1971.4	1978.5	0.36%	6.54%

STOCK PRICE INDEX WEIGHTED BY FREE FLOAT MARKET CAPITALIZATION ASE20 (2014=1000)

	761.7	763.3	0.21%	-14.33%
--	-------	-------	-------	---------

STOCK PRICE INDEX WEIGHTED BY MARKET CAPITALIZATION (1991=1000)

	WEDNESDAY 02/12/2020	THURSDAY 03/12/2020	% CHANGE	
			DAY BEFORE	YTD
GENERAL	2900.8	2906.1	0.18%	-17.29%
BANKS	5239.6	5248.6	0.17%	-26.03%
INSURANCE	1303.1	1308.2	0.39%	2.00%
SERVICES	681.4	681.7	0.04%	-7.35%
INDUSTRY	2542.5	2549.8	0.29%	-2.43%

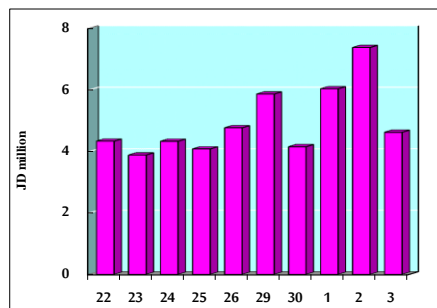
STOCK PRICE MARKET INDEX WEIGHTED BY FREE FLOAT MARKET CAP. (2012=1000)

	WEDNESDAY 02/12/2020	THURSDAY 03/12/2020	% CHANGE	
			DAY BEFORE	YTD
FIRST MARKET	821.3	823.2	0.23%	-13.87%
SECOND MARKET	856.1	861.1	0.58%	2.99%

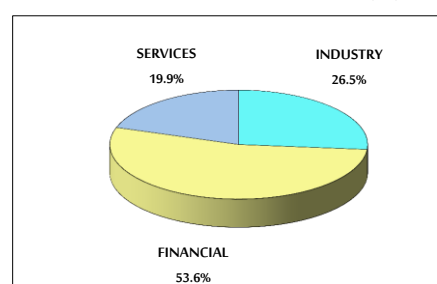
MARKET CAPITALIZATION (JD)

	12,373,562,298	12,395,942,116	0.18%	-16.89%
--	----------------	----------------	-------	---------

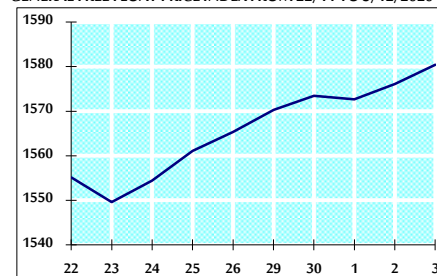
VALUE TRADED FROM 22/11 TO 3/12/2020



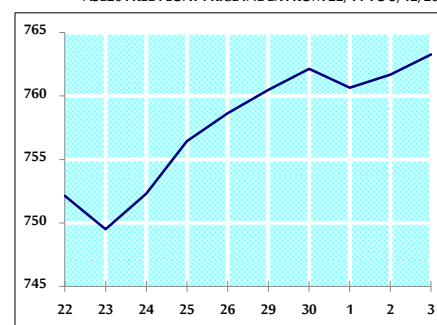
VALUE TRADED BY SECTOR THURSDAY 3/12/2020



GENERAL FREE FLOAT PRICE INDEX FROM 22/11 TO 3/12/2020



ASE20 FREE FLOAT PRICE INDEX FROM 22/11 TO 3/12/2020



GENERAL PRICE INDEX FROM 22/11 TO 3/12/2020

