

Daily Summary for Amman Stock Exchange

VALUE TRADED (JD)

	2019	2020	NET CHANGE	CHANGE (%)
Daily	4,610,734	5,463,781	853,047	18.50%
Cumulative(2/1-28/1)	83,728,726	94,959,969	11,231,243	13.41%
Cumulative(2/1-28/1)	83,728,726	94,959,969	11,231,243	13.41%

NO. OF SHARES TRADED

	2019	2020	NET CHANGE	CHANGE (%)
Daily	3,944,073	5,665,650	1,721,577	43.65%
Cumulative(2/1-28/1)	59,198,140	81,542,972	22,344,832	37.75%
Cumulative(2/1-28/1)	59,198,140	81,542,972	22,344,832	37.75%

NO. OF TRANSACTIONS

	2019	2020	NET CHANGE	CHANGE (%)
Daily	1,708	2,442	734	42.97%
Cumulative(2/1-28/1)	31,790	40,036	8,246	25.94%
Cumulative(2/1-28/1)	31,790	40,036	8,246	25.94%

SOME FINANCIAL RATIOS FOR THE ASE (28/1/2020)

SECTOR	P/E	P/BV	DIVIDEND YIELD (%)	TURNOVER (%)
FINANCIAL	10.918	0.976	5.895	0.090
SERVICES	15.963	1.136	5.445	0.059
INDUSTRY	17.478	1.434	3.702	0.110
OVERALL	11.793	1.098	5.457	0.085

STOCK PRICE INDEX WEIGHTED BY FREE FLOAT MARKET CAPITALIZATION (1999=1000)

	MONDAY 27/01/2020	TUESDAY 28/01/2020	% CHANGE	
			DAY BEFORE	YTD
GENERAL	1871.3	1868.4	-0.16%	2.93%
FINANCIAL	2517.8	2511.5	-0.25%	2.51%
SERVICES	1346.6	1341.6	-0.37%	3.75%
INDUSTRY	1909.2	1919.3	0.53%	3.35%

STOCK PRICE INDEX WEIGHTED BY FREE FLOAT MARKET CAPITALIZATION ASE20 (2014=1000)

	923.3	922.8	-0.05%	3.57%
--	-------	-------	--------	-------

STOCK PRICE INDEX WEIGHTED BY MARKET CAPITALIZATION (1991=1000)

	MONDAY 27/01/2020	TUESDAY 28/01/2020	% CHANGE	
			DAY BEFORE	YTD
GENERAL	3596.8	3587.7	-0.25%	2.11%
BANKS	7258.5	7217.9	-0.56%	1.72%
INSURANCE	1341.4	1340.8	-0.05%	4.54%
SERVICES	752.9	752.5	-0.05%	2.28%
INDUSTRY	2674.2	2683.0	0.33%	2.67%

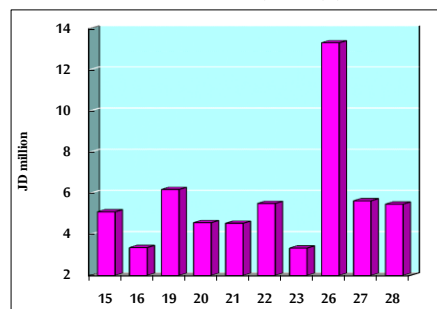
STOCK PRICE MARKET INDEX WEIGHTED BY FREE FLOAT MARKET CAP. (2012=1000)

	MONDAY 27/01/2020	TUESDAY 28/01/2020	% CHANGE	
			DAY BEFORE	YTD
FIRST MARKET	988.8	988.0	-0.09%	3.36%
SECOND MARKET	847.4	844.9	-0.30%	1.06%

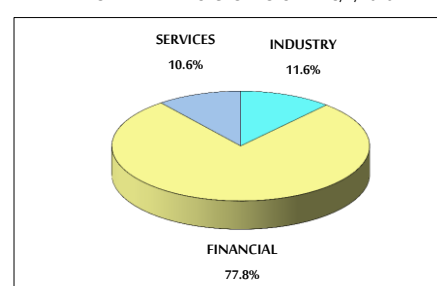
MARKET CAPITALIZATION (JD)

	15,246,452,201	15,210,558,701	-0.24%	1.98%
--	----------------	----------------	--------	-------

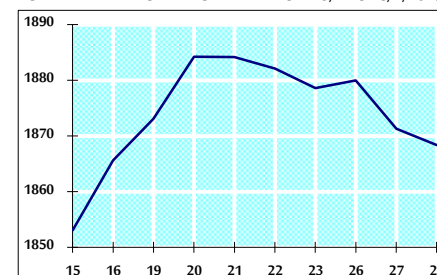
VALUE TRADED FROM 15/1 TO 28/1/2020



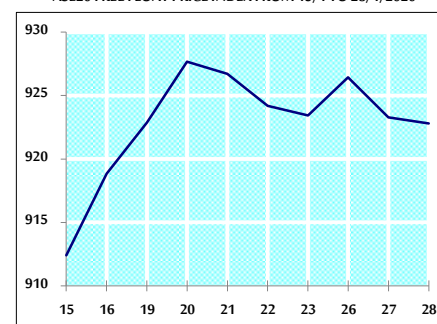
VALUE TRADED BY SECTOR TUESDAY 28/1/2020



GENERAL FREE FLOAT PRICE INDEX FROM 15/1 TO 28/1/2020



ASE20 FREE FLOAT PRICE INDEX FROM 15/1 TO 28/1/2020



GENERAL PRICE INDEX FROM 15/1 TO 28/1/2020

