

Daily Summary for Amman Stock Exchange

VALUE TRADED (JD)

	2018	2019	NET CHANGE	CHANGE (%)
Daily	4,221,346	3,259,778	-961,568	-22.78%
Cumulative(1/10-15/10)	72,559,580	55,620,256	-16,939,324	-23.35%
Cumulative(2/1-15/10)	1,234,820,755	1,133,411,473	-101,409,282	-8.21%

NO. OF SHARES TRADED

	2018	2019	NET CHANGE	CHANGE (%)
Daily	4,168,717	3,046,283	-1,122,434	-26.93%
Cumulative(1/10-15/10)	61,024,546	46,471,225	-14,553,321	-23.85%
Cumulative(2/1-15/10)	892,591,276	949,998,888	57,407,612	6.43%

NO. OF TRANSACTIONS

	2018	2019	NET CHANGE	CHANGE (%)
Daily	2,786	1,914	-872	-31.30%
Cumulative(1/10-15/10)	26,650	22,670	-3,980	-14.93%
Cumulative(2/1-15/10)	398,471	410,009	11,538	2.90%

SOME FINANCIAL RATIOS FOR THE ASE (15/10/2019)

SECTOR	P/E	P/BV	DIVIDEND YIELD (%)	TURNOVER (%)
FINANCIAL	10.831	0.969	5.939	0.037
SERVICES	14.833	1.105	5.657	0.039
INDUSTRY	19.985	1.346	3.939	0.092
OVERALL	11.736	1.057	5.711	0.045

STOCK PRICE INDEX WEIGHTED BY FREE FLOAT MARKET CAPITALIZATION (1999=1000)

	MONDAY 14/10/2019	TUESDAY 15/10/2019	% CHANGE	
			DAY BEFORE	YTD
GENERAL	1824.3	1827.2	0.16%	-4.27%
FINANCIAL	2473.4	2471.3	-0.08%	-6.84%
SERVICES	1304.5	1303.7	-0.07%	1.86%
INDUSTRY	1810.4	1833.5	1.28%	-2.61%

STOCK PRICE INDEX WEIGHTED BY FREE FLOAT MARKET CAPITALIZATION ASE20 (2014=1000)

	MONDAY 14/10/2019	TUESDAY 15/10/2019	% CHANGE	YTD
	891.0	892.4	0.16%	-3.67%

STOCK PRICE INDEX WEIGHTED BY MARKET CAPITALIZATION (1991=1000)

	MONDAY 14/10/2019	TUESDAY 15/10/2019	% CHANGE	
			DAY BEFORE	YTD
GENERAL	3508.6	3513.4	0.14%	-7.47%
BANKS	7143.0	7140.3	-0.04%	-13.41%
INSURANCE	1310.5	1307.4	-0.24%	-5.02%
SERVICES	746.5	746.8	0.03%	-6.28%
INDUSTRY	2531.0	2547.7	0.66%	10.23%

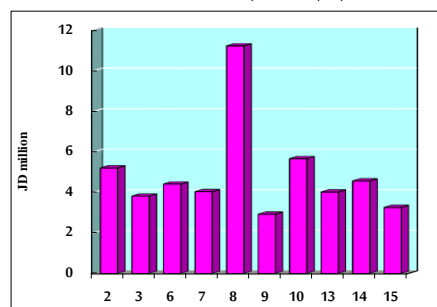
STOCK PRICE MARKET INDEX WEIGHTED BY FREE FLOAT MARKET CAP. (2012=1000)

	MONDAY 14/10/2019	TUESDAY 15/10/2019	% CHANGE	
			DAY BEFORE	YTD
FIRST MARKET	959.2	960.6	0.14%	-5.01%
SECOND MARKET	852.5	855.4	0.34%	2.86%

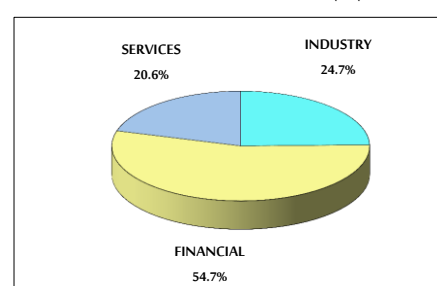
MARKET CAPITALIZATION (JD)

	MONDAY 14/10/2019	TUESDAY 15/10/2019	% CHANGE	YTD
	14,926,756,312	14,945,807,442	0.13%	-7.30%

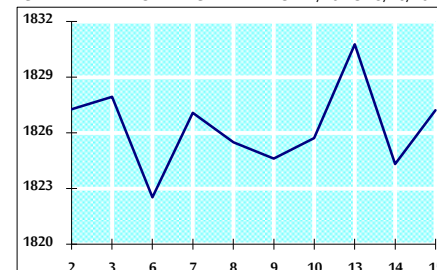
VALUE TRADED FROM 2/10 TO 15/10/2019



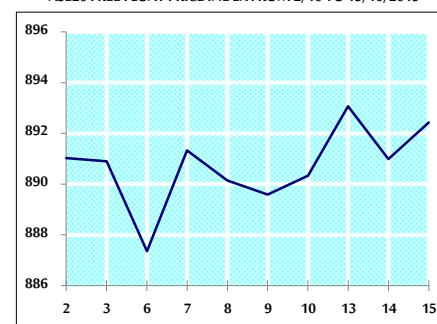
VALUE TRADED BY SECTOR TUESDAY 15/10/2019



GENERAL FREE FLOAT PRICE INDEX FROM 2/10 TO 15/10/2019



ASE20 FREE FLOAT PRICE INDEX FROM 2/10 TO 15/10/2019



GENERAL PRICE INDEX FROM 2/10 TO 15/10/2019

